



Since 1922, Clark Memorial Hospital has provided superior health services to the residents of southern Indiana. Today, Clark Memorial Hospital is a 241-bed acute care facility located on a 22-acre campus in Jeffersonville, Ind. The campus also includes two medical office buildings and an outpatient surgery center. Clark Memorial owns an Urgent Care and Diagnostic Imaging Center eight miles north of the main campus and manages its growing physician offices through the Clark Physician Group. Clark Memorial's 1,600 employees, 41 providers, and more than 250 active medical staff, including primary care physicians, specialists and subspecialists, bring the culture of patient-centered care to nearly 82,000 patients each year.

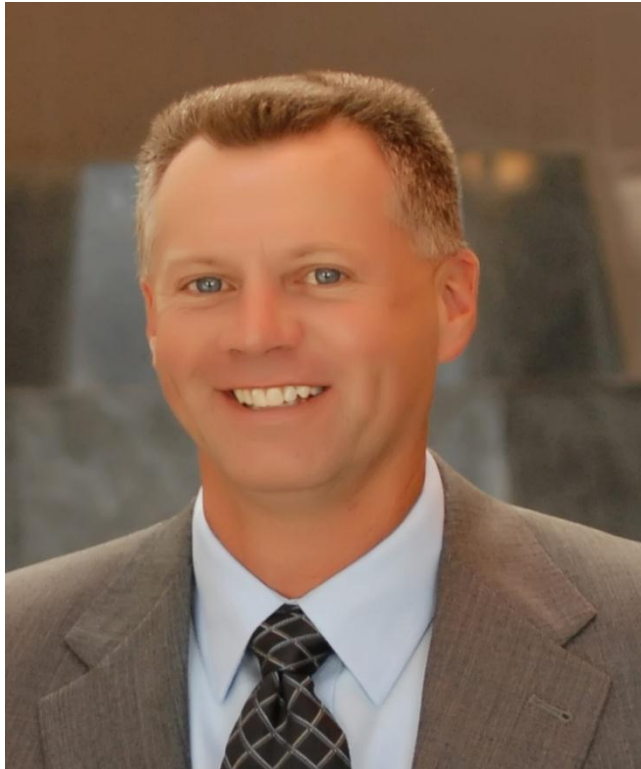
With a long-standing tradition of care and continuous expansion of new programs and services, Clark Memorial Hospital is truly a premier health care provider and a standard for excellence in the region.

Clark Memorial Hospital Jeffersonville, Ind.



Clark Memorial Hospital

No One Cares Like Clark.



Martin Padgett joined Clark Memorial Hospital in 1997 as Vice President and CFO and has served as President and CEO since 2005, bringing with him more than 24 years of experience in healthcare finance and administration. A native of Lexington, Ky., Padgett holds an undergraduate degree in Accounting from the University of Kentucky and a graduate degree in Business Administration from Morehead State University. Prior to joining Clark Memorial's leadership team, Padgett served as Director of Finance at St. Claire Medical Center and as a senior accountant at Ernst & Young.

He is a Fellow in the American College of Health Care Executives, an adjunct professor at Spalding University, a co-chair for the Patient Safety Coalition-South Central District, holds a CPA certification, and serves on numerous local boards, including YMCA of Southern Indiana and Ivy Tech Community College.

Martin Padgett, MBA, CPA, FACHE
President/CEO



Clark Memorial Hospital

No One Cares Like Clark.

Organizational Statistics – 2012

- ▶ 241 Beds
- ▶ 13,869 Admissions
- ▶ 51,788 Patient Days
- ▶ 1,535 Births
- ▶ 45,826 Emergency Room Visits
- ▶ 12,932 Surgical Procedures
- ▶ 1,600 Team Members
- ▶ 250 Physicians on Active Medical Staff
- ▶ 41 Employed Providers



Clark Memorial Hospital

No One Cares Like Clark.

Culture of Quality & Safety

- ▶ Starts with Strategic Plan
- ▶ Board Involvement & Senior Leadership Support
- ▶ Evidenced-based Practice
- ▶ Lean/Six Sigma Process Improvement
- ▶ Communication/Collaboration with Key Stakeholders: Team Members, Physicians, Community Partners, Vendors

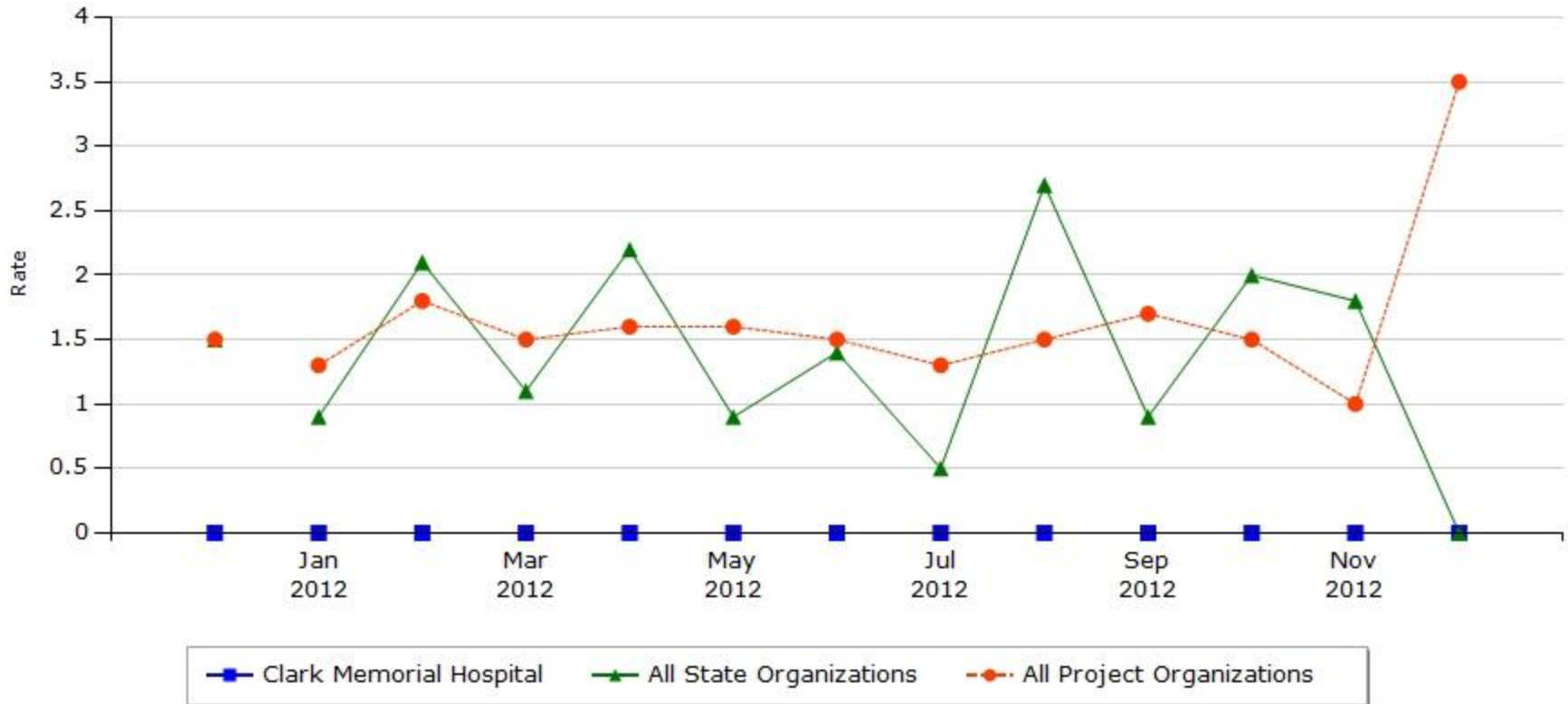


Clark Memorial Hospital

No One Cares Like Clark.

Ventilator Associated Pneumonia

(VAP (VAE)) Ventilator-Associated Pneumonia Rate - ICU only (CDC NHSN)



www.HRET.org, 2013

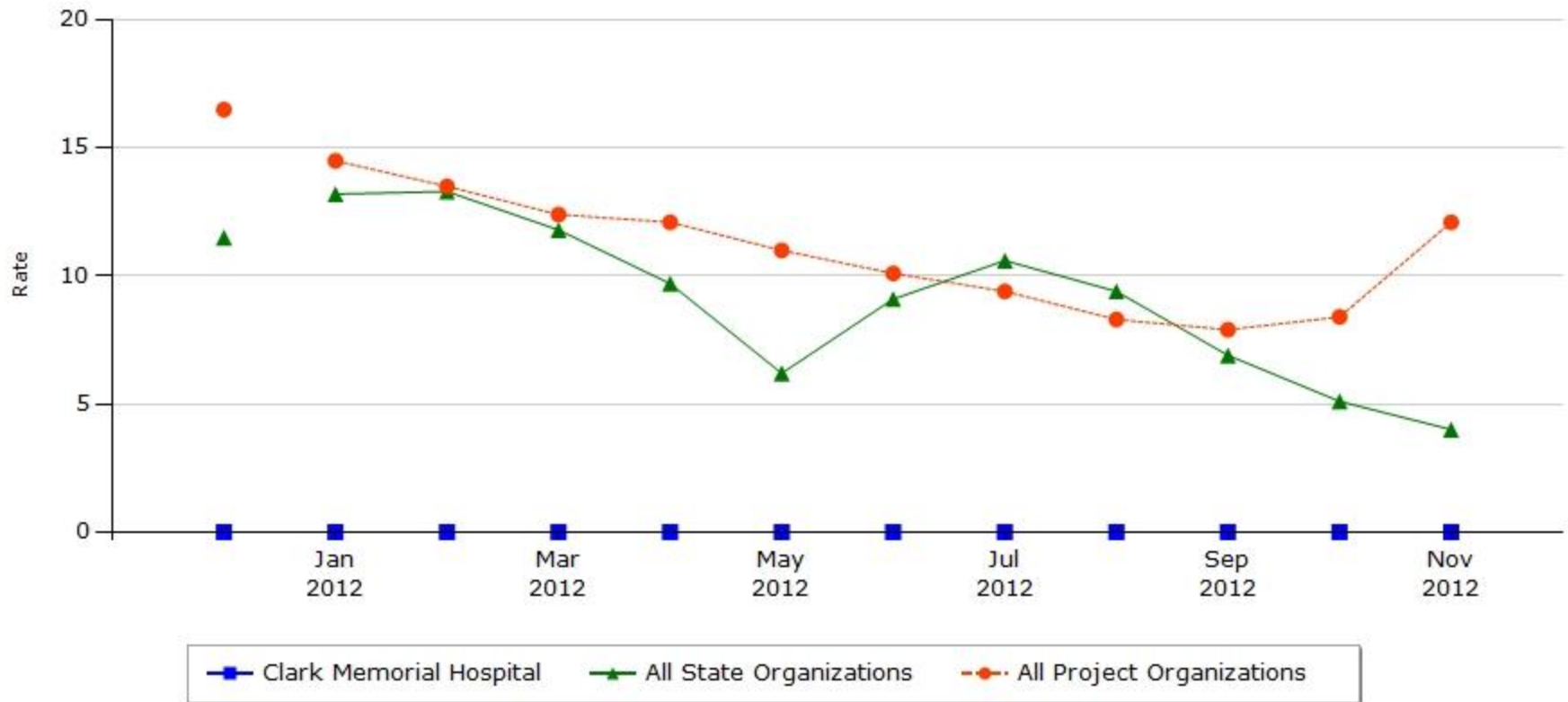


Clark Memorial Hospital

No One Cares Like Clark.

Early Elective Deliveries

(OB) Elective Deliveries at ≥ 37 Weeks and < 39 Weeks (JC PC-1)



www.HRET.org, 2013

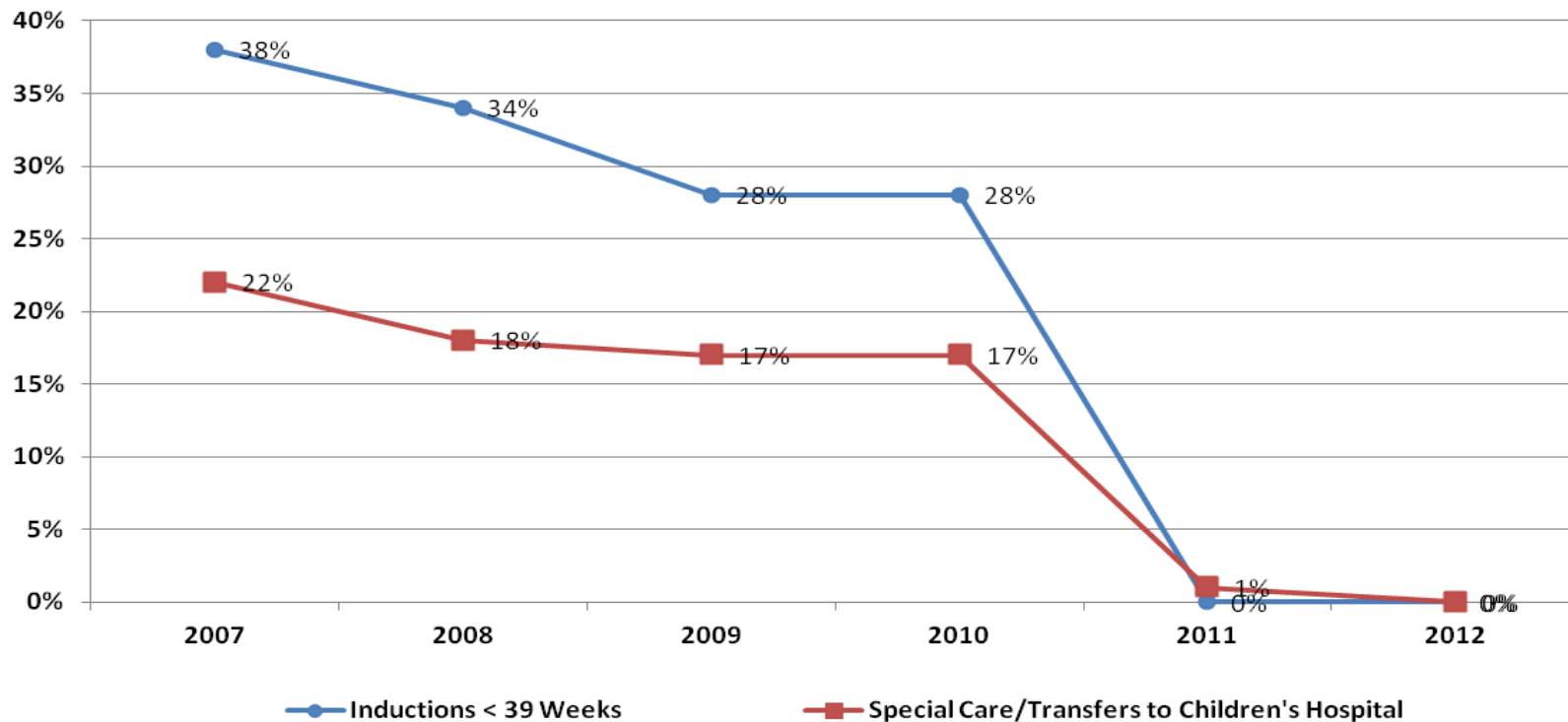


Clark Memorial Hospital

No One Cares Like Clark.

Early Elective Deliveries

Inductions <39 Weeks & Special Care/Transfers to Children's Hospital
Clark Memorial Hospital Data



Clark Memorial Hospital

No One Cares Like Clark.

Contact information:

Martin Padgett

Clark Memorial Hospital

1220 Missouri Avenue

Jeffersonville, IN 47130

Martin.padgett@clarkmemorial.org

(812) 283-2147



Clark Memorial Hospital

No One Cares Like Clark.