

**AHA 2014  
COMMITTEE ON GOVERNANCE (COG)**

**Bina Eggensperger (COG Chair)  
Trustee  
Clark Fork Valley Hospital  
Plains, MT**



**Fred P. Gattas, Jr. (COG Chair-Elect)  
Trustee  
St. Jude Children's Research Hospital  
Memphis, TN**



**Katherine Keene (COG Immediate Past-Chair)  
Trustee  
Salem Hospital  
Salem, OR**



**Margaret Dahl (COG Region 4 Member)  
Chair  
Athens Regional Medical Center  
Athens, GA**



**Joseph J. Fennessy**  
**Chair**  
**South Nassau Communities Hospital**  
**Oceanside, NY**



**Matthew Gross (COG At-Large Member)**  
**Trustee**  
**Fisher-Titus Medical Center**  
**Norwalk, OH**



**James A. Hartley (COG At-Large Member)**  
**Board Chair**  
**Carilion Clinic**  
**Roanoke, VA**



**William Hartsock (COG Region 5 Member)**  
**Trustee**  
**Botsford Hospital**  
**Farmington Hills, MI**



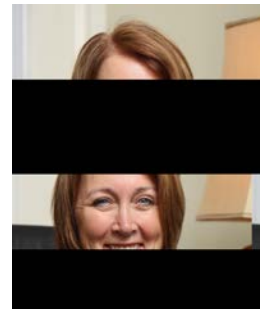
**Edward L. Hatcher (COG Region 6 Member)**  
**Immediate Past-Chair**  
**Grinnell Regional Medical Center**  
**Grinnell, IA**



**David B. Hyman, DDS (COG At-Large Member)**  
**Vice-Chair**  
**Hartford HealthCare (HHC)**  
**Hartford, CT**



**Brenda Ireland (COG At-Large Member)**  
**Board Chair**  
**Woman's Christian Association Hospital (WCA)**  
**Jamestown, NY**



**Edison Jensen (COG At-Large Member)**  
**Trustee**  
**Dominican Hospital**  
**Santa Cruz, CA**



**Donna J. King (COG At-Large Member)**  
**Trustee**  
**SCL Health System**  
**Denver, CO**



**Gerry Lewis-Jenkins (COG Region 8 Member)**  
**Trustee**  
**Platte Valley Medical Center**  
**Brighton, CO**



**Ron Loving (COG At-Large Member)**  
**Trustee**  
**Erlanger Medical Center**  
**Chattanooga, TN**



**Tom Mangione (COG At-Large Member)**  
**Chair**  
**Southern Hills Hospital & Medical Center**  
**Las Vegas, NV**



**Sally Mills (COG Region 1 Member)**  
**Trustee**  
**Blue Hill Memorial Hospital**  
**Blue Hill, ME**



**Donald Pizer (COG At-Large Member)**  
**Trustee**  
**Abington Memorial Hospital**  
**Abington, PA**



**Al Purcell (COG At-Large Member)**  
**Chair**  
**Heartland Regional Medical Center**  
**Saint Joseph, MO**



**Jonathan Raven (COG At-Large Member)**  
**Board Member Emeritus**  
**Sparrow Hospital**  
**Lansing, MI**



**Sarah Schermerhorn (COG Region 2 Member)**  
**Trustee**  
**Ellis Hospital**  
**Schenectady, NY**



**Drew Sones (COG At-Large Member)**  
**Board Member**  
**PIH Health**  
**Whittier, CA**



**Anthony Stanowski (COG Region 3 Member)**  
**Trustee**  
**Bon Secours Baltimore Hospital**  
**Baltimore, MD**



**Andrew Stern (COG At-Large Member)**  
**Trustee**  
**Medical City Dallas Hospital**  
**Dallas, TX**



**Anthony G. Wagner (COG Region 9 Member)**  
**Director**  
**Sutter Health West Bay Region Hospitals**  
**San Francisco, CA**



**Joe Wilkins (COG At-Large Member)**  
**Board Chair**  
**St. Joseph Hoag Health Network**  
**Irvine, CA**



**Ex Officio**

**Barbara Wilson (AHA Board Liaison)**  
**Trustee**  
**St. Luke's Health System**  
**Boise, ID**

