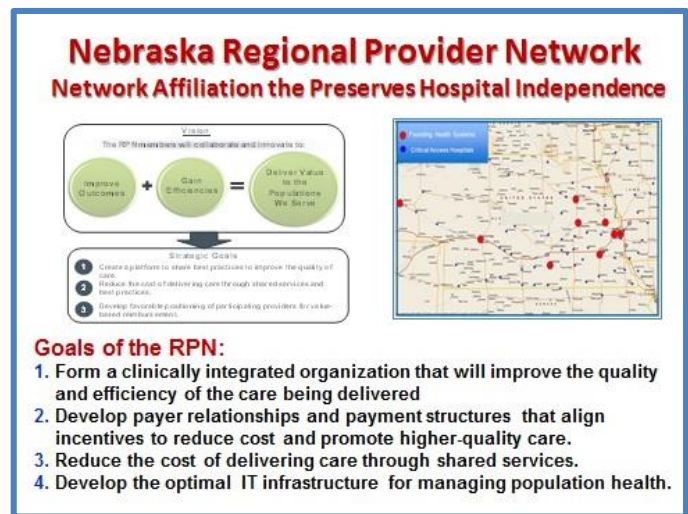


NEBRASKA'S REGIONAL PROVIDER NETWORK

Combines independence with collaboration and metro with rural to form an eclectic network of hospitals

In Nebraska, three metro health systems and six rural hub community hospitals have joined forces to create the RPN, LLC. This regional provider network (RPN) is one of several networks blossoming across the United States in response to market forces such as integration, value-based purchasing, care coordination, and accountable care organizations, but offers independent institutional governance as uniquely characteristic of its foundation.



Nebraska Medical Center, Omaha; Nebraska Methodist Health System, Omaha; and Bryan Health, Lincoln are metro and represent three of the nine systems in the RPN. The others involved are rural hubs and include Columbus Community Hospital in Columbus, Faith Regional Health Services in Norfolk, Fremont Area Medical Center in Fremont, Great Plains Regional Medical Center in North Platte, Mary Lanning Healthcare in Hastings, and Regional West Medical Center in Scottsbluff. All nine hospitals have signed an operating agreement forming a limited liability corporation.

The RPN Board of Managers is comprised of twenty individuals, including two members from each of the nine partners, executive and physician pairs serving from each organization. Two additional members serve as voting members of the board, representing the broader group of critical access hospitals (CAH) and other organizations. The Board has formed working committees for shared services, payer contracting, clinical integration, health information technology and network membership. Consolidating self-insured employee health plans is a priority.

Leaders of the group have also met with officials from critical access hospitals (CAHs) across the state and 42 CAHs have expressed interest in joining the group. They see the potential for clinical integration and working within the network to maintain coverage for commercially insured patients once ACOs get traction.

