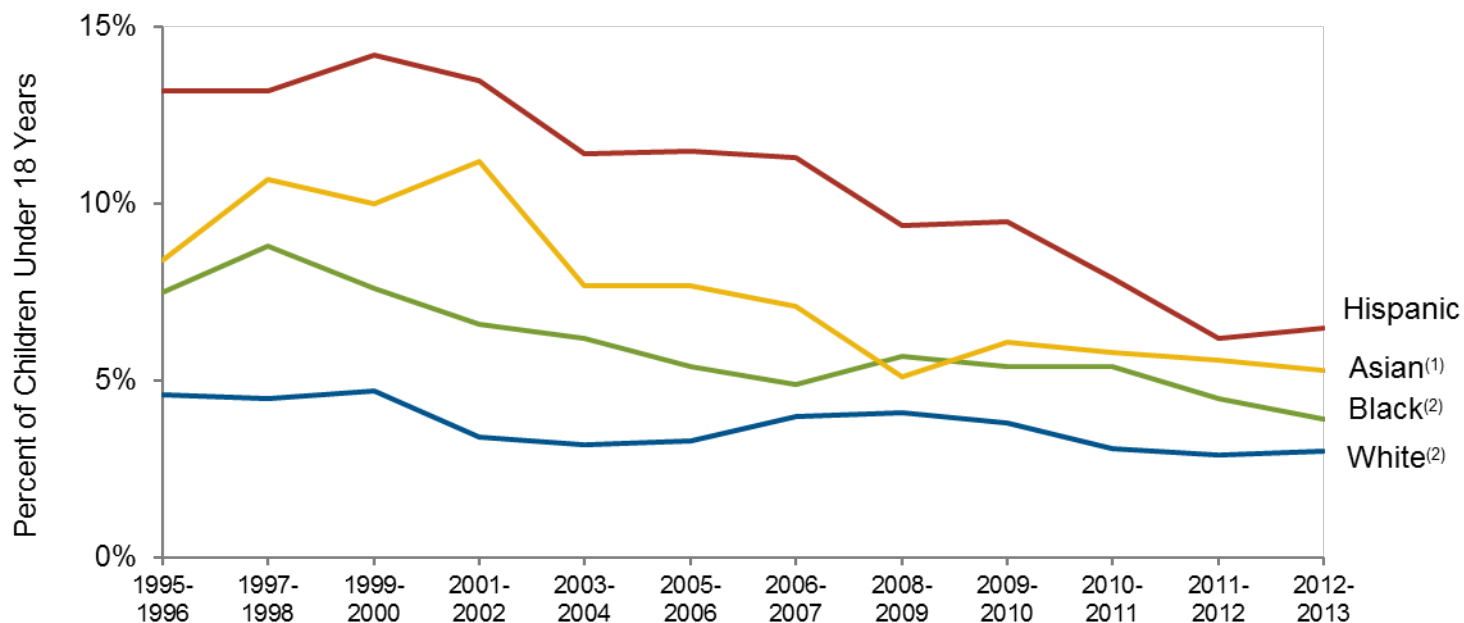


### Chart 7.16: Percent of Children with No Usual Source of Care by Race, 1995 – 2013



Source: National Center for Health Statistics. (2015). *Health, United States, 2014*. Hyattsville, MD.

(1) Includes individuals of Hispanic and non-Hispanic origin.

(2) Includes individuals of non-Hispanic origin only.