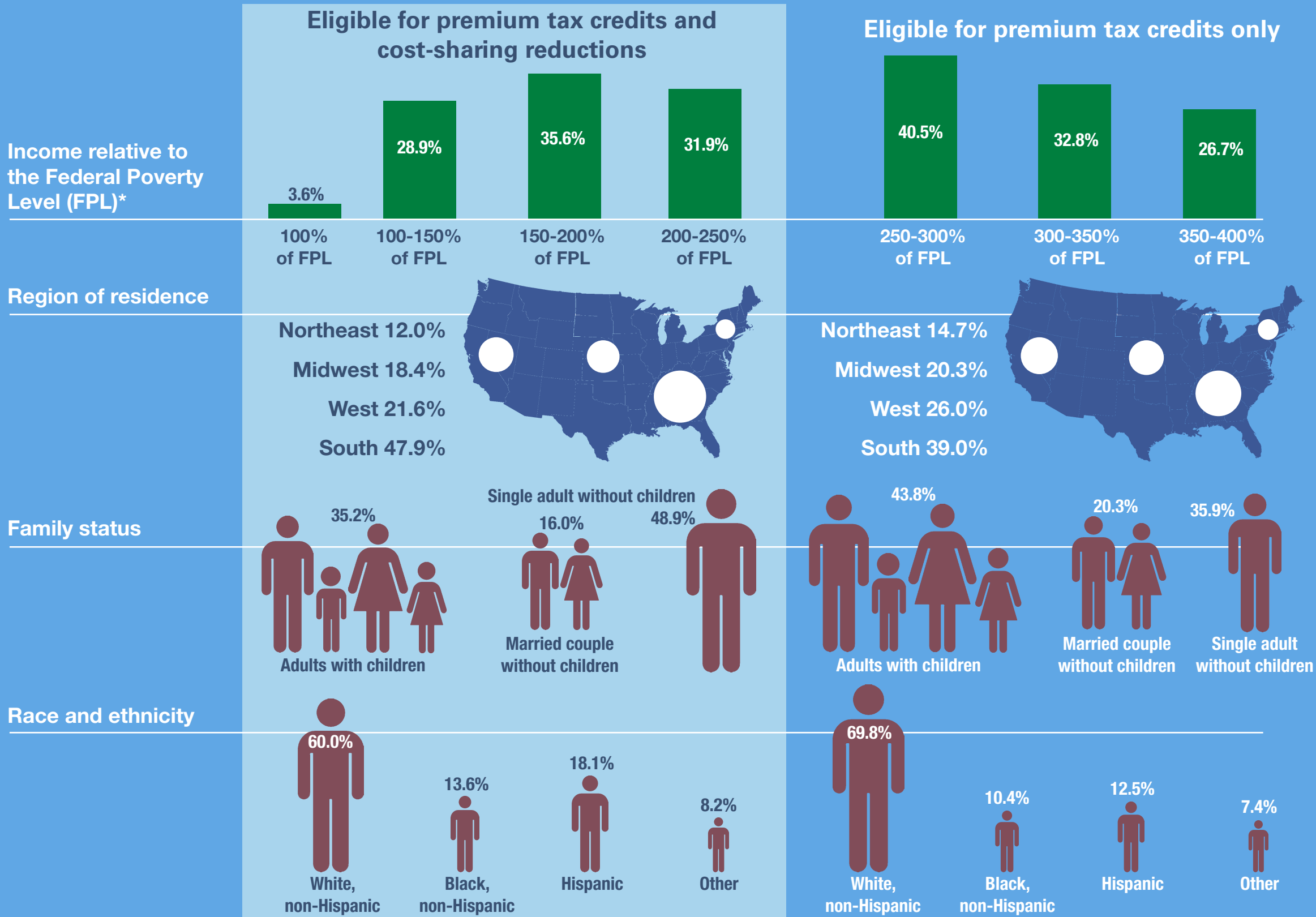


Characteristics of Individuals Eligible for Cost-sharing Reductions (CSR) and Premium Tax Credits



*Premium tax credits and CSR not applicable for income above 250% of FPL and tax credits only not applicable for incomes below 250% of FPL: <https://www.healthcare.gov/glossary/federal-poverty-level-fpl/>.

Source: Robert Wood Johnson Foundation: http://www.rwjf.org/content/dam/farm/reports/issue_briefs/2015/rwjf417841.