



TRENDWATCH CHARTBOOK 2007

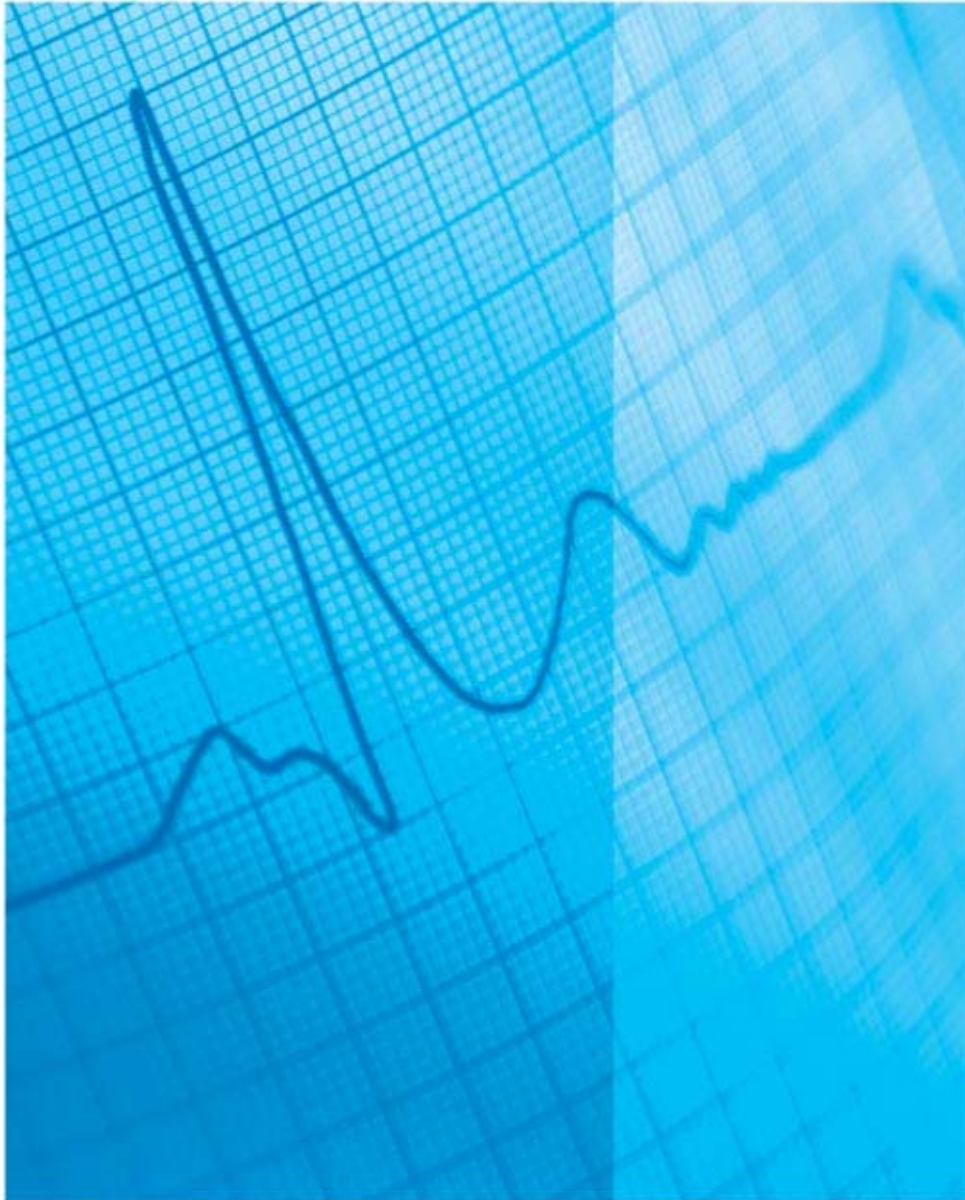
Trends Affecting Hospitals and Health Systems



TABLE OF CONTENTS

CHAPTER 2.0: **Organizational Trends**

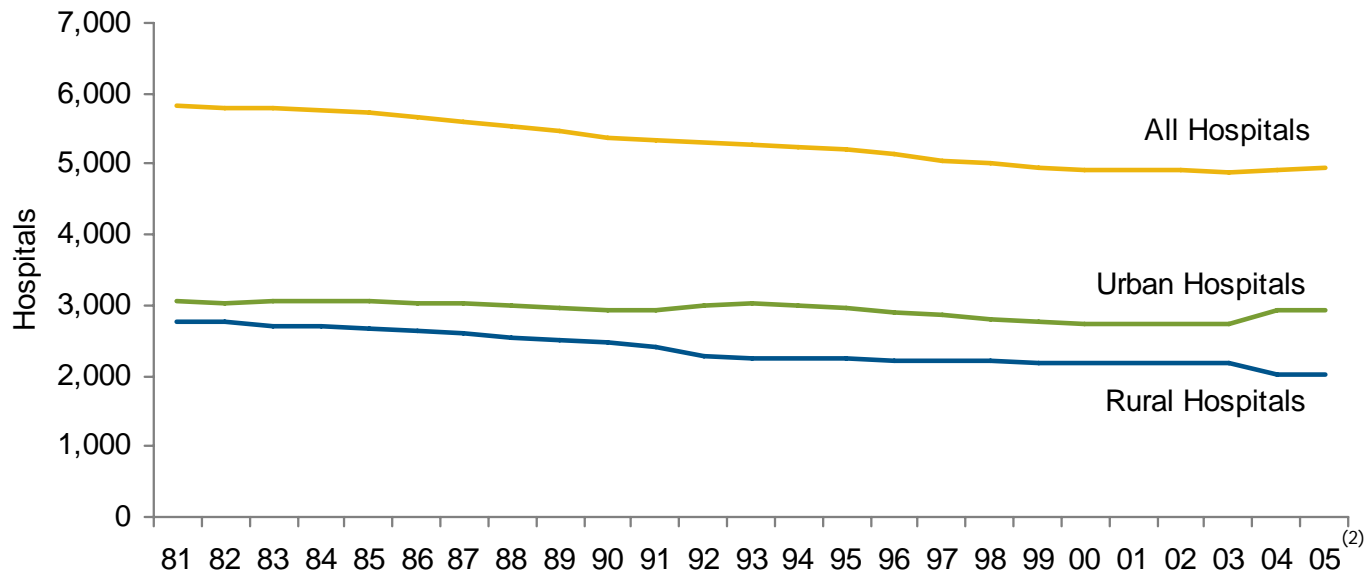
- Chart 2.1: Number of Community Hospitals, 1981 – 2005
- Chart 2.2: Number of Beds and Number of Beds per 1,000 Persons, 1981 – 2005
- Chart 2.3: Beds per 1,000 by State, 2005
- Chart 2.4: Number of Hospitals in Health Systems, 2000 – 2005
- Chart 2.5: Percent of Outpatient Surgeries by Facility Type, 1981 – 2005
- Chart 2.6: Number of Freestanding Ambulatory Care Surgery Centers, 1996, 1998, and 2000 – 2006
- Chart 2.7: Percentage of Hospitals with Physician Affiliates by Type of Relationship, 1995 – 2005
- Chart 2.8: Percentage of Hospitals with Insurance Products by Type of Insurance, 1995 – 2005
- Chart 2.9: Percentage of Hospitals Offering “Non-hospital” Services, 1995 – 2005
- Chart 2.10: Announced Hospital Mergers and Acquisitions, 1998 – 2005



CHAPTER 2

Organizational Trends

Chart 2.1: Number of Community Hospitals,⁽¹⁾ 1981 – 2005

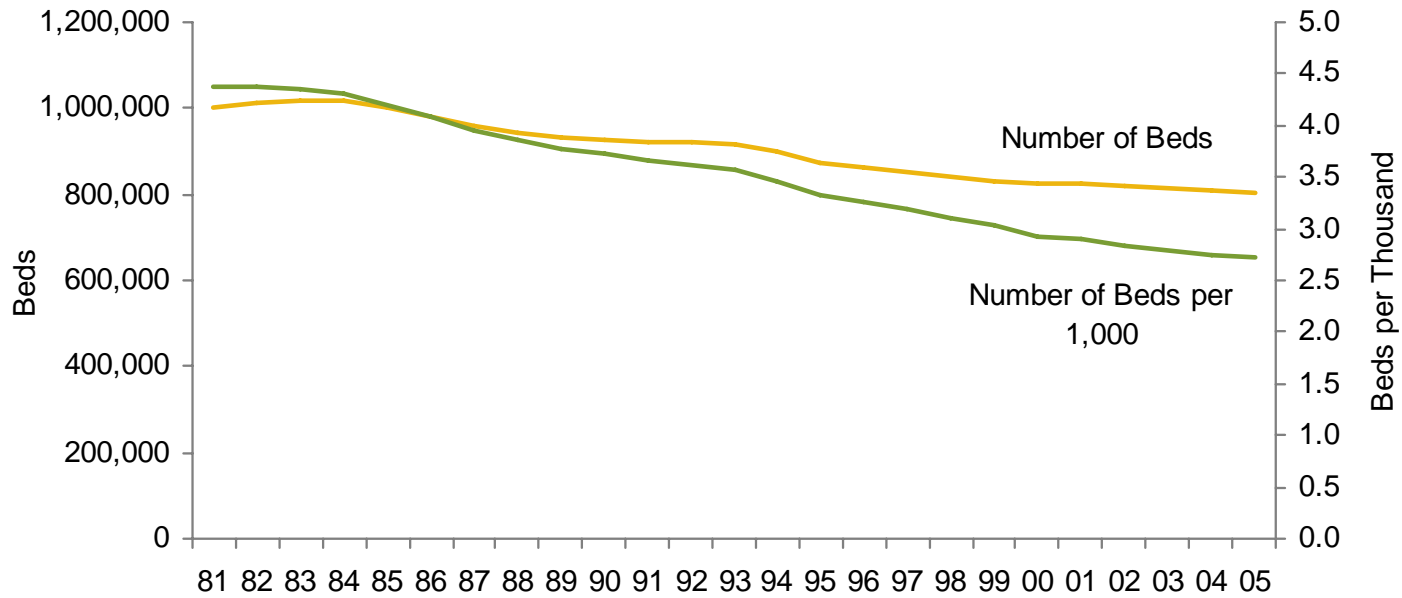


Source: Avalere Health analysis of American Hospital Association Annual Survey data, 2005, for community hospitals.

⁽¹⁾ All nonfederal, short-term general, and specialty hospitals whose facilities and services are available to the public.

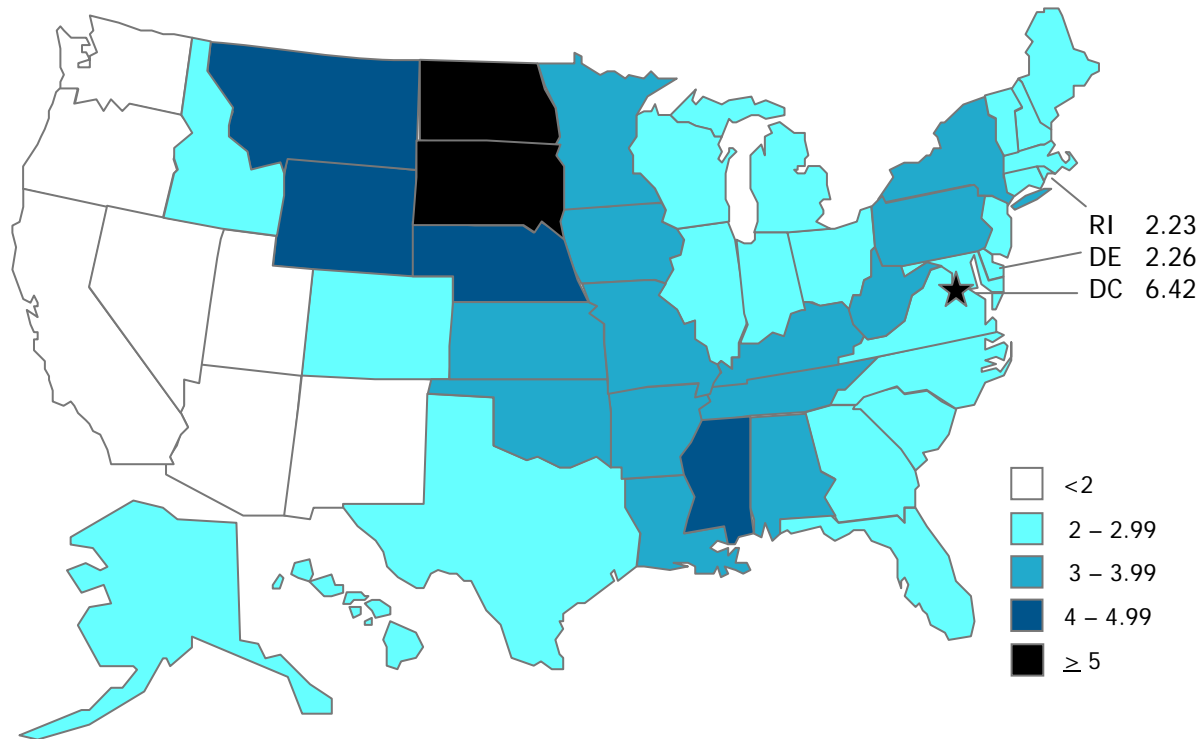
⁽²⁾ Data on the number of urban and rural hospitals in 2004 and beyond were collected using coding different from previous years to reflect new Centers for Medicare & Medicaid Services wage area designations.

Chart 2.2: Number of Beds and Number of Beds per 1,000 Persons, 1981 – 2005



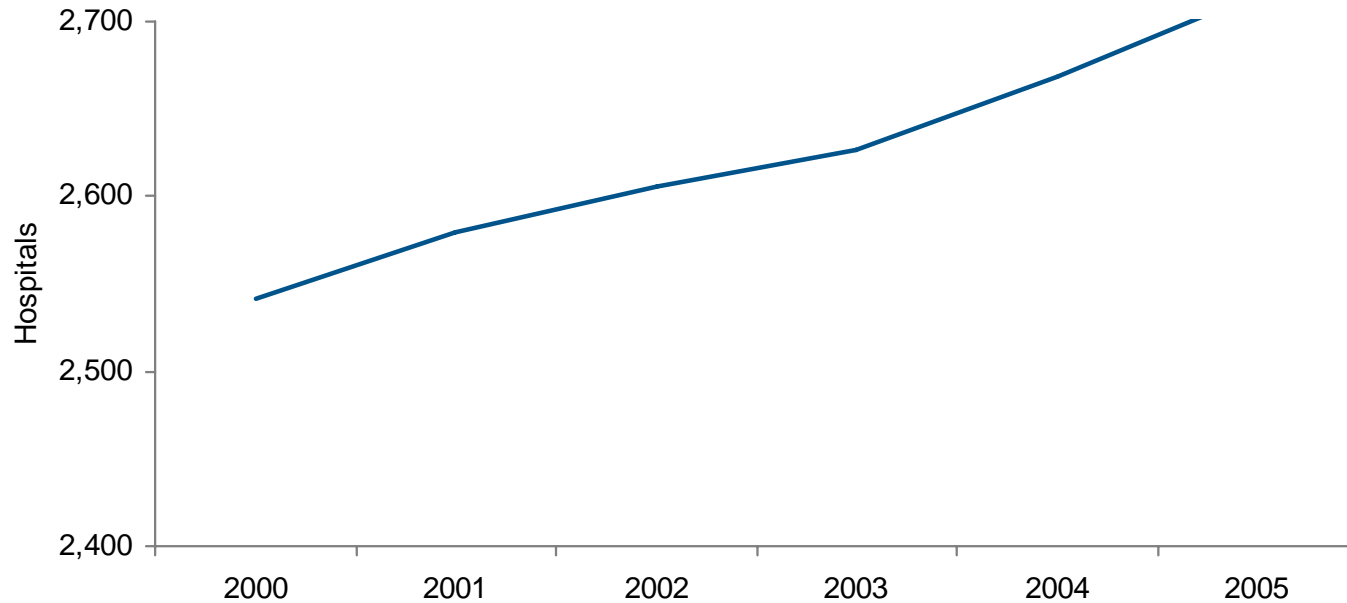
Source: Avalere Health analysis of American Hospital Association Annual Survey data, 2005, for community hospitals.

Chart 2.3: Beds per 1,000 by State, 2005



Source: Avalere Health analysis of American Hospital Association Annual Survey data, 2005, for community hospitals.
US Census Bureau: National and State Population Estimates, July 1, 2005.
Link: <http://www.census.gov/popest/states/tables/NST-EST2006-01.xls>.

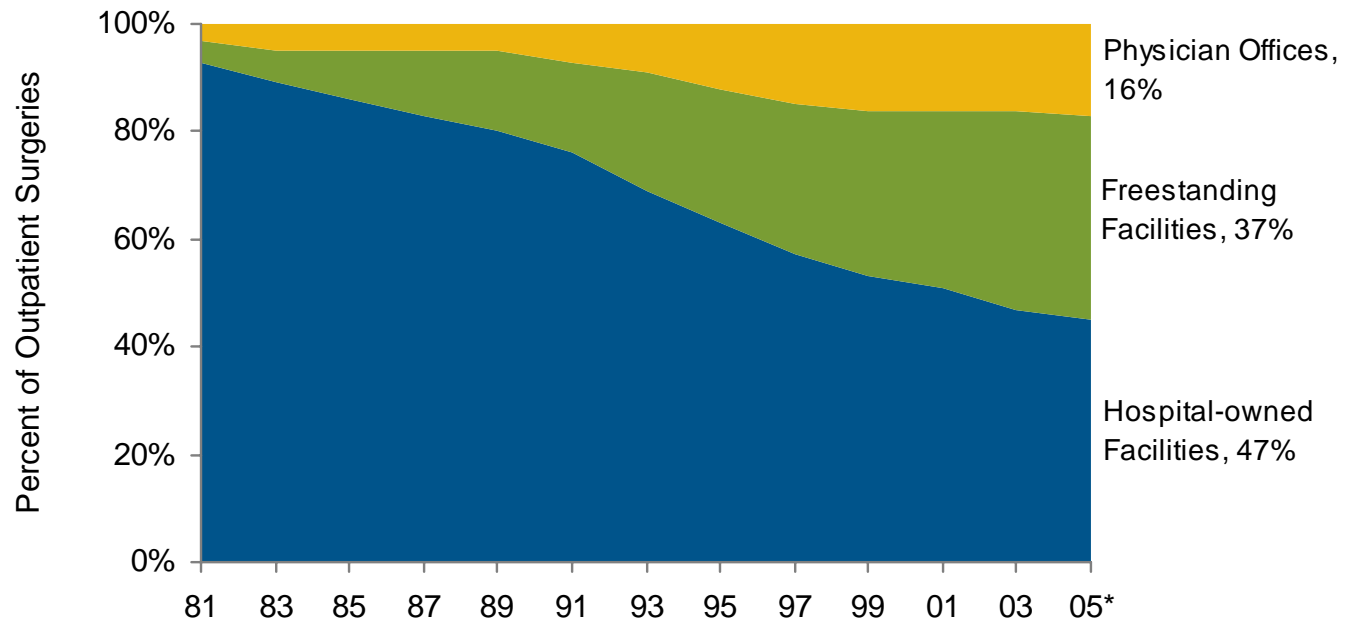
Chart 2.4: Number of Hospitals in Health Systems,⁽¹⁾ 2000 – 2005



Source: Avalere Health analysis of American Hospital Association Annual Survey data, 2005, for community hospitals.

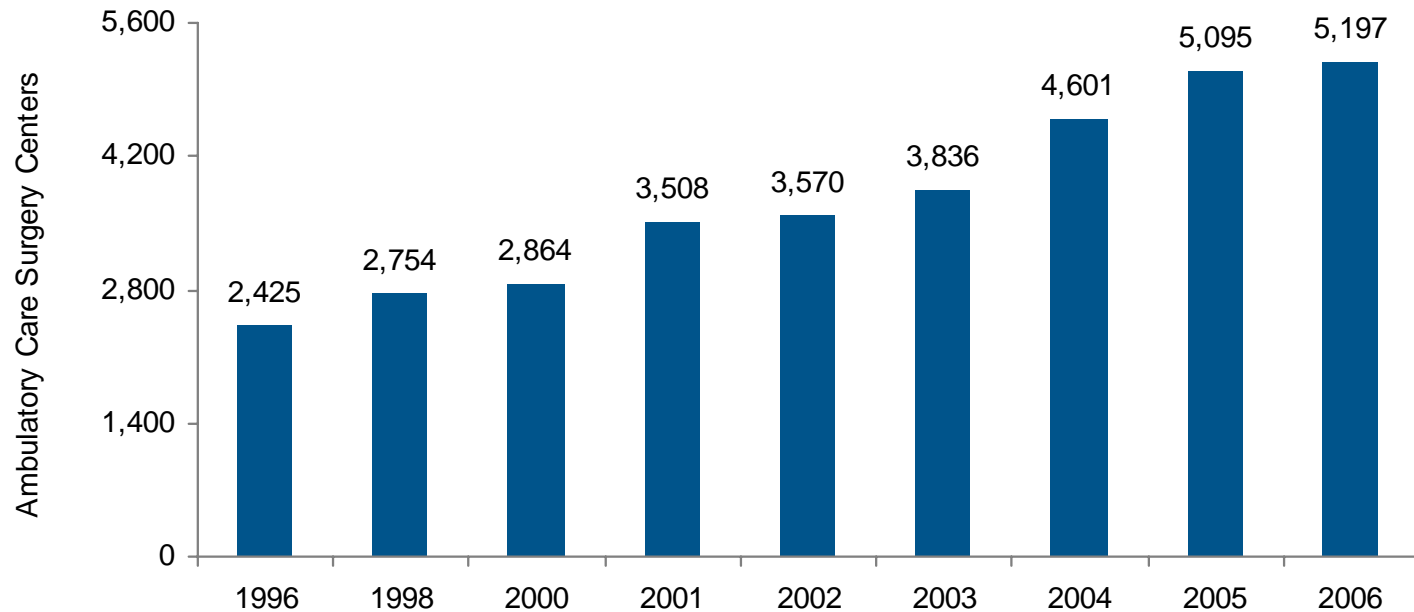
⁽¹⁾ Hospitals that are part of a corporate body that may own and/or manage health provider facilities or health-related subsidiaries as well as non-health-related facilities including freestanding and/or subsidiary corporations.

Chart 2.5: Percent of Outpatient Surgeries by Facility Type, 1981 – 2005



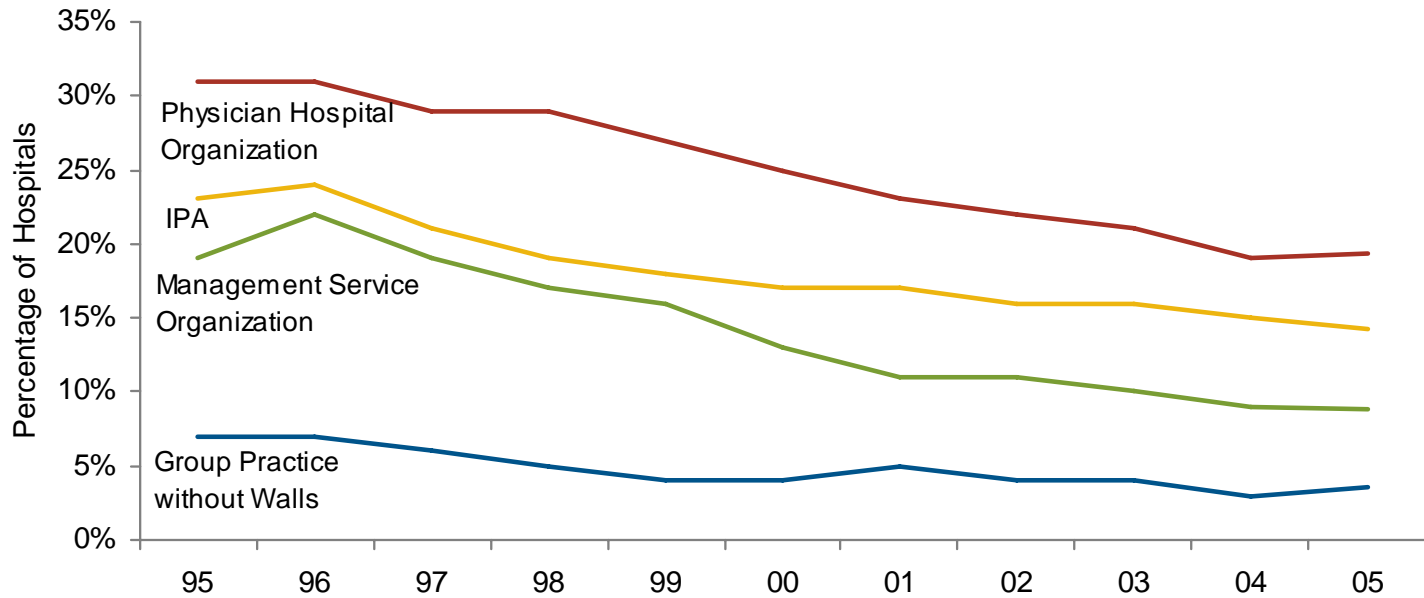
Source: Verispan, *Diagnostic Imaging Center Profiling Solution*, 2004.
*2005 values are estimated based upon current trends.

Chart 2.6: Number of Freestanding Ambulatory Care Surgery Centers, 1996, 1998, and 2000 – 2006



Source: Verispan, *2006 Guide to Healthcare Market Segments*, 2006.

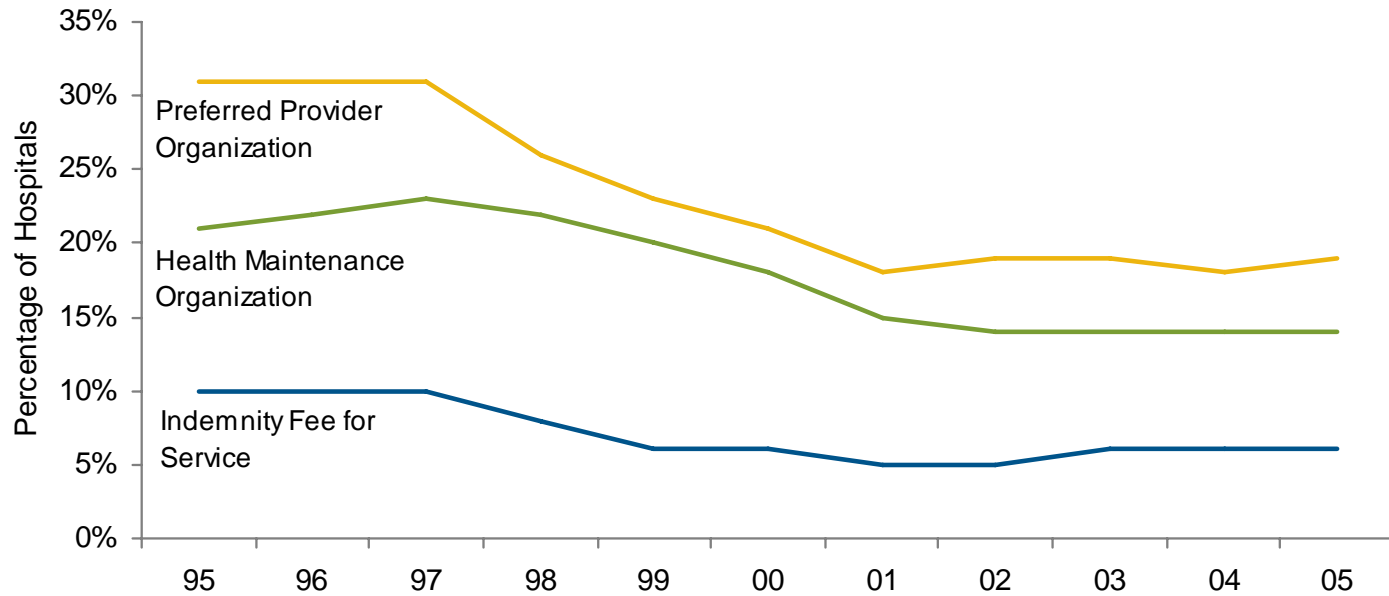
Chart 2.7: Percentage of Hospitals with Physician Affiliates⁽¹⁾ by Type of Relationship, 1995 – 2005



Source: Avalere Health analysis of American Hospital Association Annual Survey data, 2005, for community hospitals.

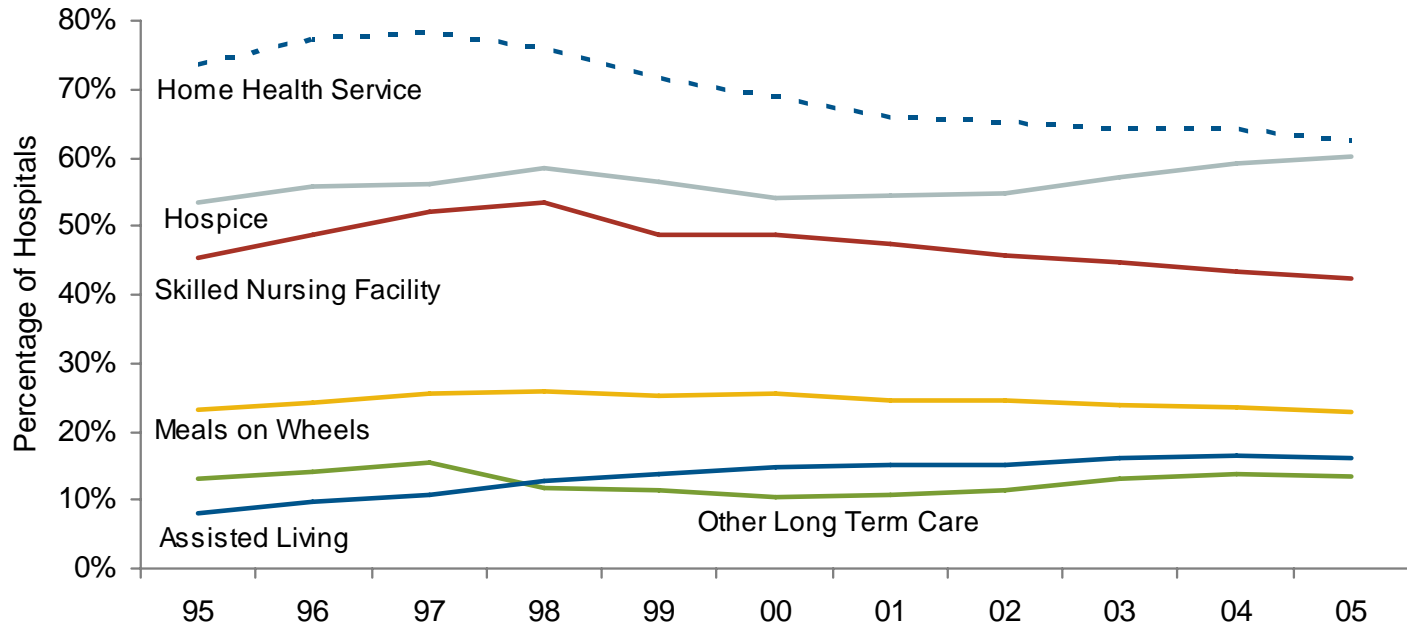
⁽¹⁾ A hospital is considered to have a physician relationship if the relationship exists as part of the hospital or a system or network of which the hospital is a part.

Chart 2.8: Percentage of Hospitals with Insurance Products by Type of Insurance, 1995 – 2005



Source: Avalere Health analysis of American Hospital Association Annual Survey data, 2005, for community hospitals.

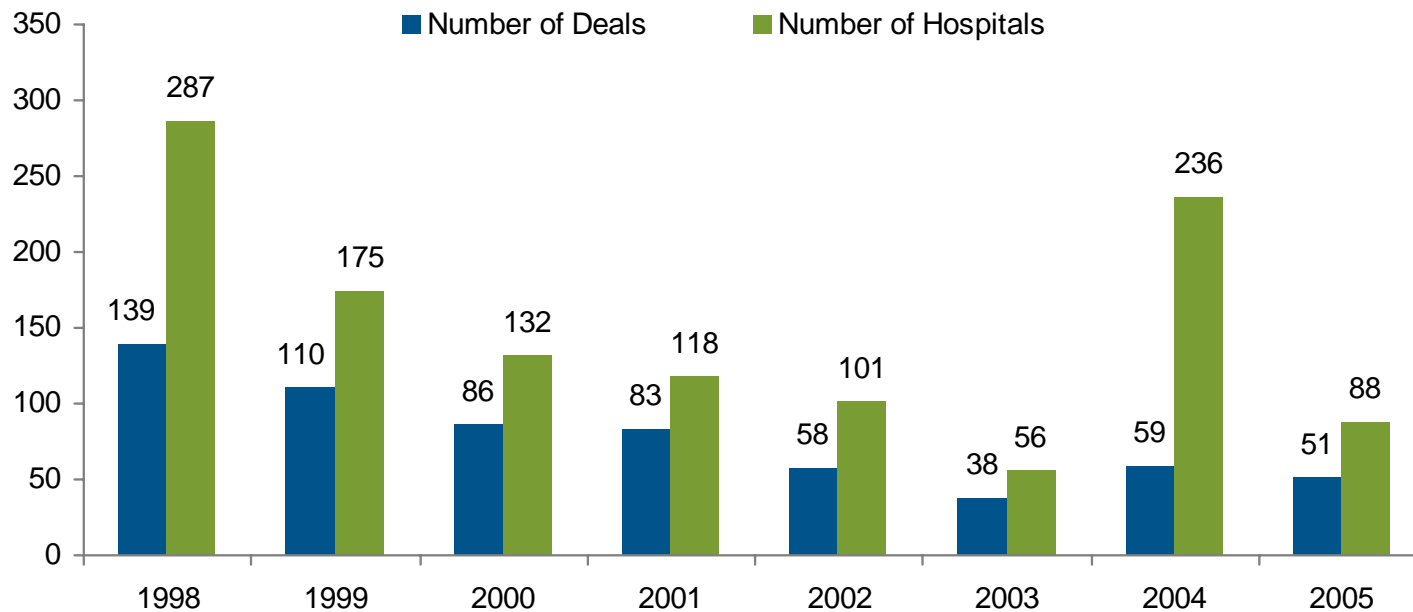
Chart 2.9: Percentage of Hospitals Offering “Non-hospital” Services,⁽¹⁾ 1995 – 2005



Source: Avalere Health analysis of American Hospital Association Annual Survey data, 2005, for community hospitals.

⁽¹⁾ Includes services offered in hospital, health system, network or joint venture.

Chart 2.10: Announced Hospital Mergers and Acquisitions, 1998 – 2005



Source: Irving Levin Associates, Inc., *The Health Care Acquisition Report*, Twelfth Edition, 2006.