



TRENDWATCH CHARTBOOK 2008

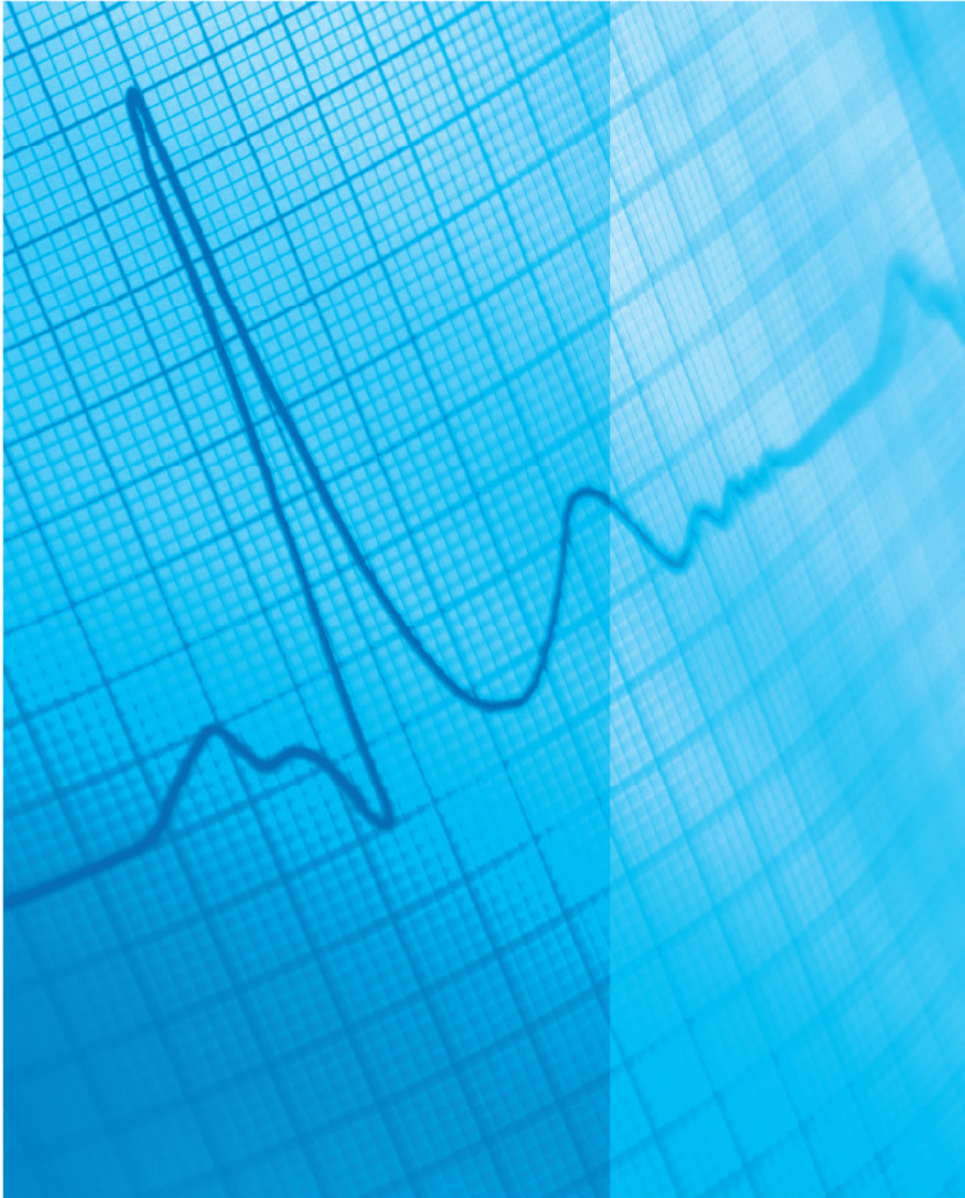


Trends Affecting Hospitals and Health Systems

TABLE OF CONTENTS

CHAPTER 7.0: **Community Health Indicators**

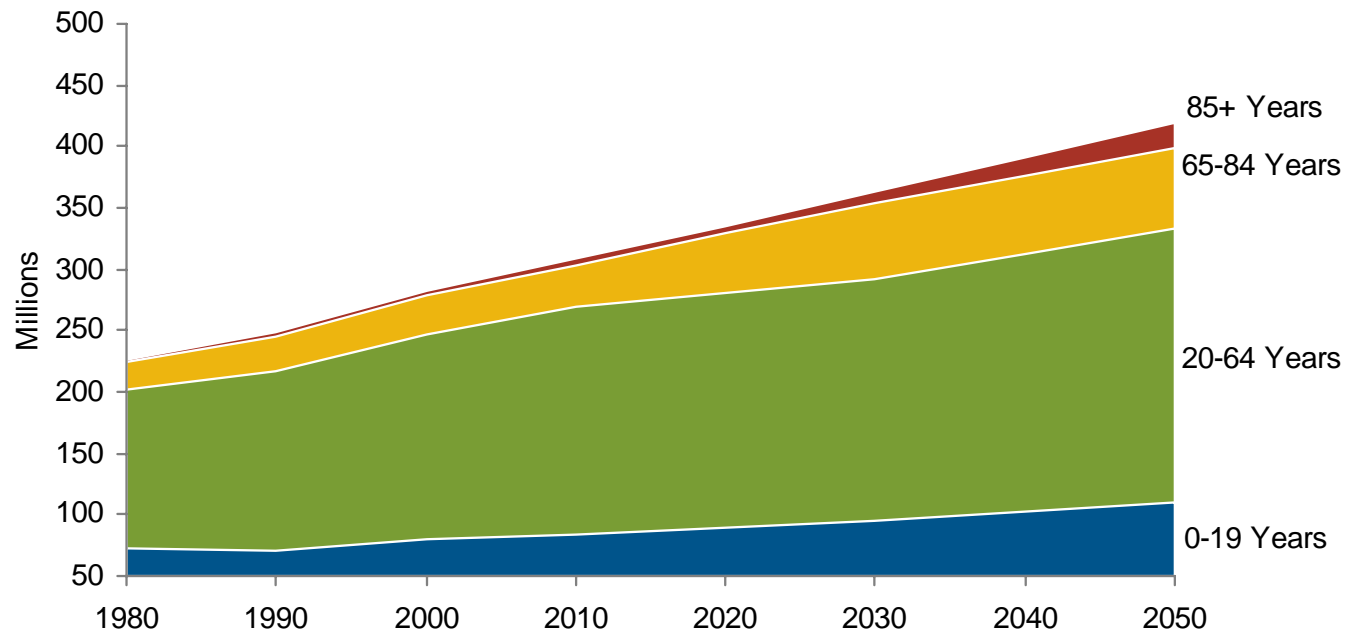
- Chart 7.1: U.S. Population Trends and Projections by Age, 1980-2050
- Chart 7.2: U.S. Population Trends and Projections by Race, 2000-2050
- Chart 7.3: Age-adjusted Death Rates, Selected Causes, by Race, 2004
- Chart 7.4: Percent of People with Chronic Conditions by Number and Sex, 2004
- Chart 7.5: Percent of People with Chronic Conditions by Type, 2004
- Chart 7.6: Number of Persons with Asthma, 1980-2005
- Chart 7.7: Percent of Adults with Hypertension by Sex, 1988-1994 and 2000-2004
- Chart 7.8: Percent of Adults Who Are Overweight and Obese, 1960-2004
- Chart 7.9: Percent of Services Used by People with Chronic Conditions, 2004
- Chart 7.10: Percent of Spending for Individuals with Chronic Conditions by Insurance Status, 2004
- Chart 7.11: Percent of Population vs. Percent of Spending, by Number of Chronic Conditions, 2004
- Chart 7.12: Working Age Adults with Activity Limitations Due to Chronic Conditions, by Condition and Age, 2004-2005
- Chart 7.13: Percent Uninsured by Race, 1984-2005
- Chart 7.14: Percent of Adults with No Usual Source of Care by Race, 1993-2005
- Chart 7.15: Percent of Adults with No Usual Source of Care by Insurance Status, 1993-2005
- Chart 7.16: Percent of Children with No Usual Source of Care by Race, 1993-2005
- Chart 7.17: Percent of Children with No Usual Source of Care by Insurance Status, 1993-2005
- Chart 7.18: Percent of Individuals with No Healthcare Visits by Race, Insurance Status, 1997 and 2005
- Chart 7.19: Percent of Children with No Healthcare Visits by Race, Insurance Status, 1997 and 2005
- Chart 7.20: Percent of Children with No Dental Visits by Race, Poverty Status, 1997 and 2005
- Chart 7.21: Percent of Children Vaccinated by Race, Poverty Status, 2002 and 2006
- Chart 7.22: Percent of Women Receiving Mammography by Race, Poverty Status, 1990 and 2005



CHAPTER 7

Community Health
Indicators

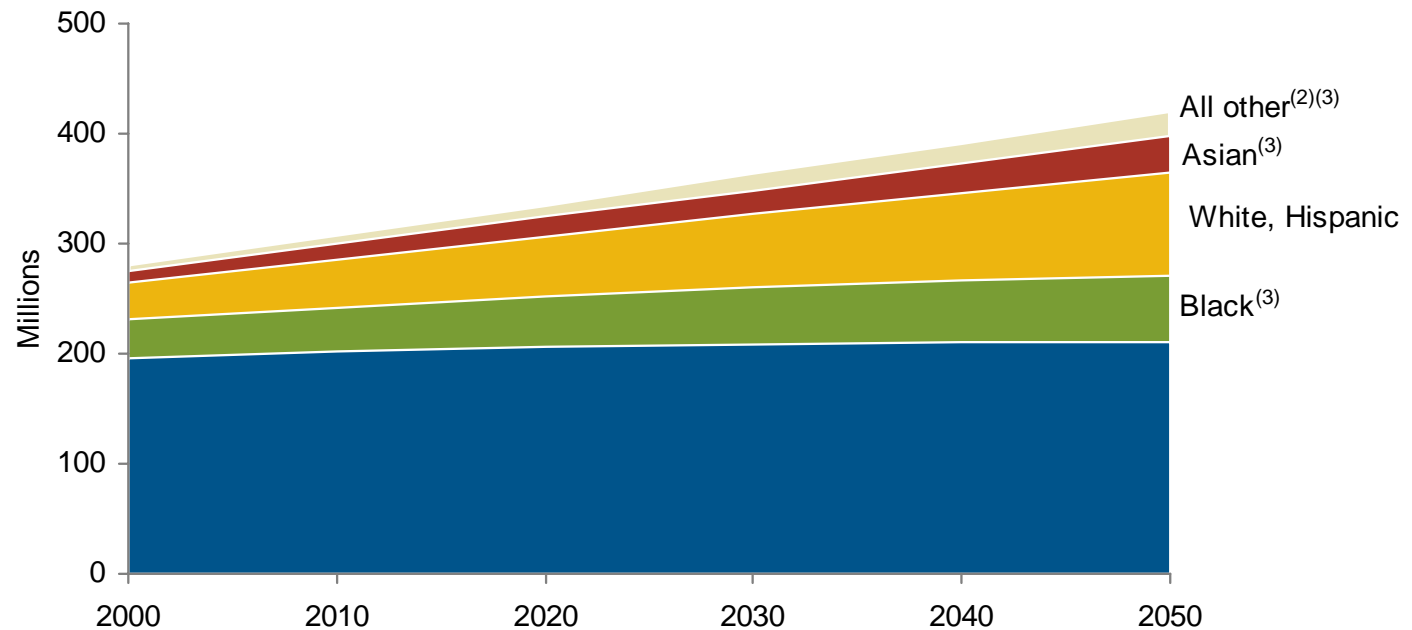
Chart 7.1: U.S. Population Trends and Projections by Age, 1980-2050⁽¹⁾



Source: U.S. Department of Commerce, Bureau of the Census. (2004). *U.S. Interim Projections by Age, Sex, Race, and Hispanic Origin*.

⁽¹⁾ Years 2010 through 2050 are projections.

Chart 7.2: U.S. Population Trends and Projections by Race, 2000-2050⁽¹⁾



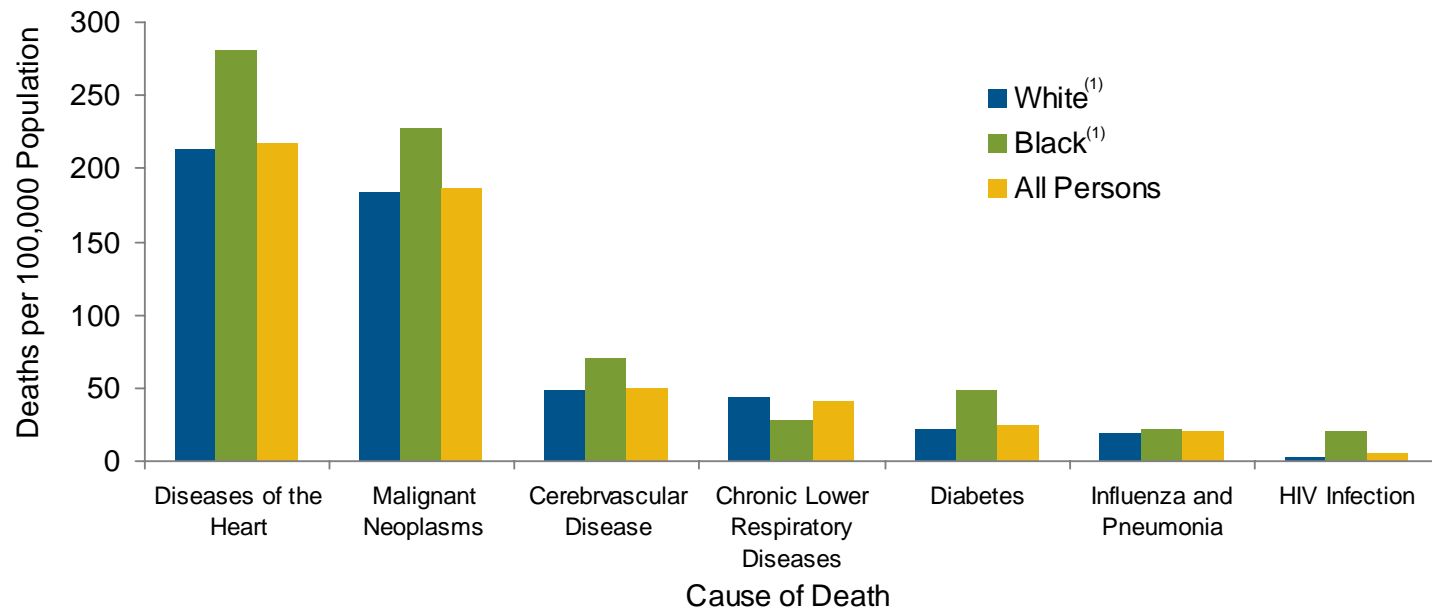
Source: U.S. Department of Commerce, Bureau of the Census. (2004). *U.S. Interim Projections by Age, Sex, Race, and Hispanic Origin*.

⁽¹⁾ Years 2010 through 2050 are projections.

⁽²⁾ All other includes American Indian, Native Alaskan, Native Hawaiian, other Pacific Islander, and two or more races.

⁽³⁾ Black, Asian, and all other categories include Hispanic and non-Hispanic individuals. 2.8 million individuals of Hispanic origin are included in these groups.

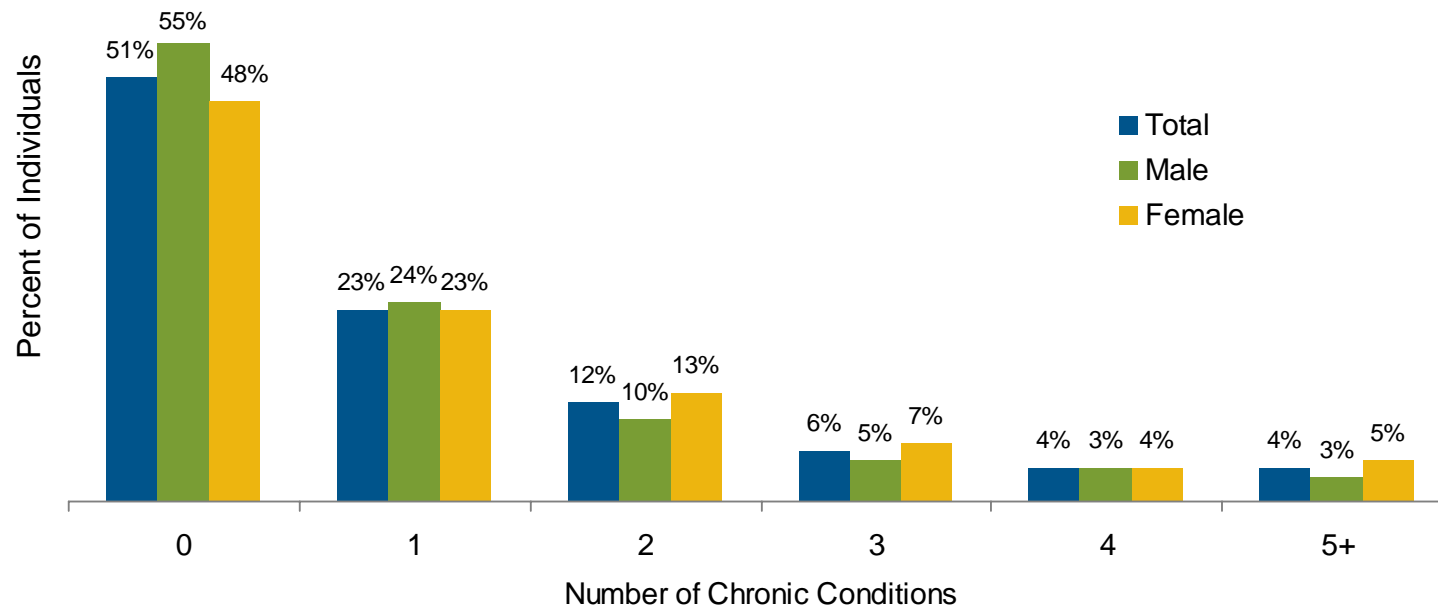
Chart 7.3: Age-adjusted Death Rates, Selected Causes, by Race, 2004



Source: National Center for Health Statistics. (2007). *Health, United States, 2007 with Chartbook on Trends in the Health of Americans*. Hyattsville, MD.

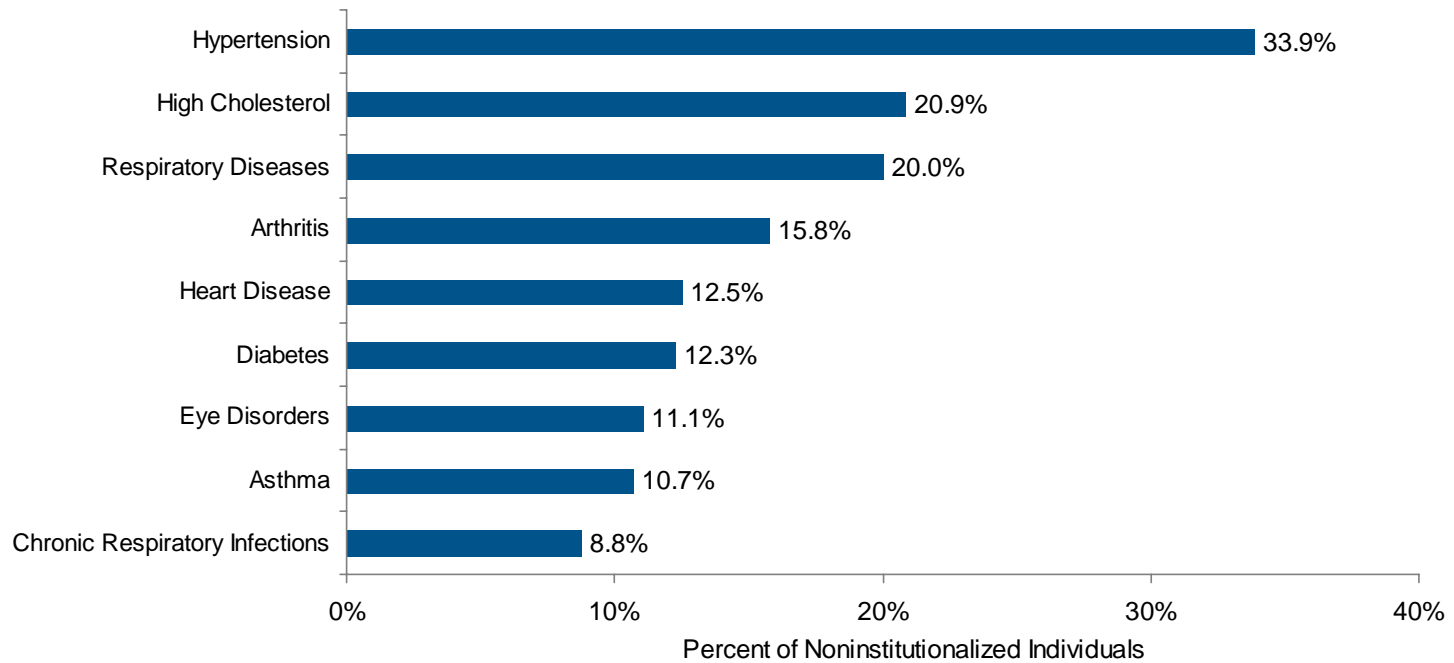
⁽¹⁾ Racial categories include individuals of both Hispanic and non-Hispanic origin.

Chart 7.4: Percent of People with Chronic Conditions by Number and Sex, 2004



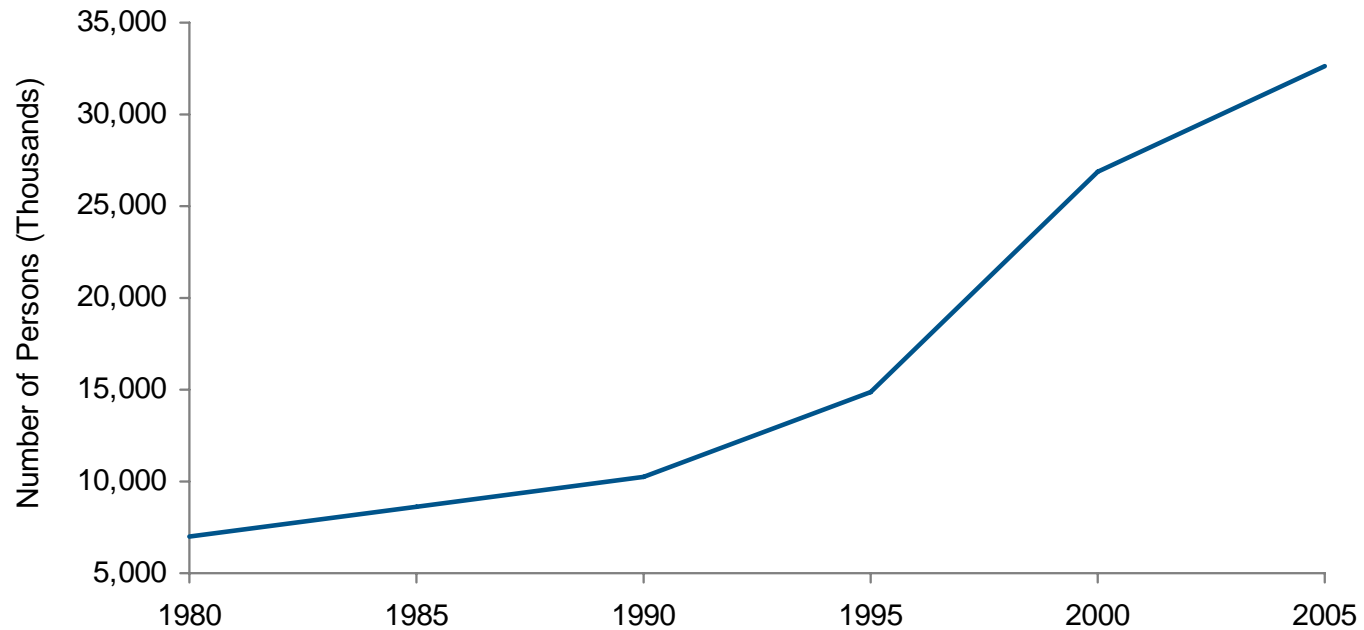
Source: Anderson, G. (2007). *Chronic Conditions: Making the Case for Ongoing Care*. Baltimore, MD: Johns Hopkins University.

Chart 7.5: Percent of People with Chronic Conditions by Type, 2004



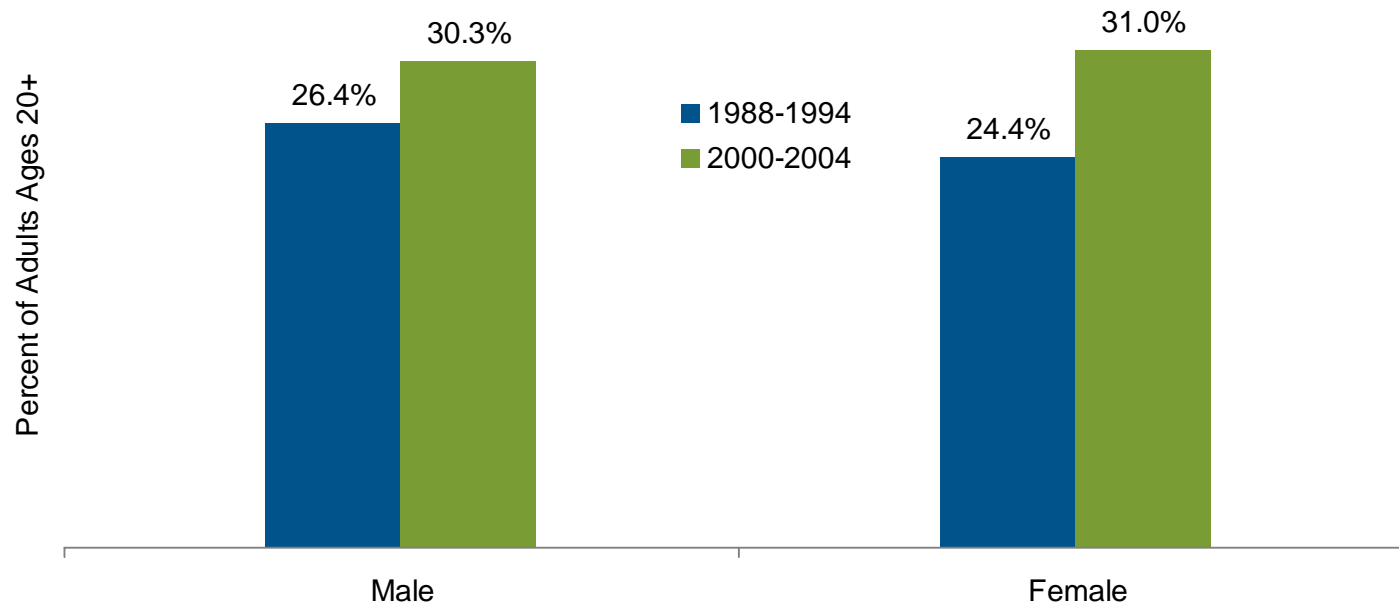
Source: Anderson, G. (2007). *Chronic Conditions: Making the Case for Ongoing Care*. Baltimore, MD: Johns Hopkins University.

Chart 7.6: Number of Persons with Asthma, 1980-2005



Source: Centers for Disease Control and Prevention (2002). "Asthma Surveillance – United States, 1980-1999." National Center for Health Statistics. National Health Interview Survey 2001, 2005.

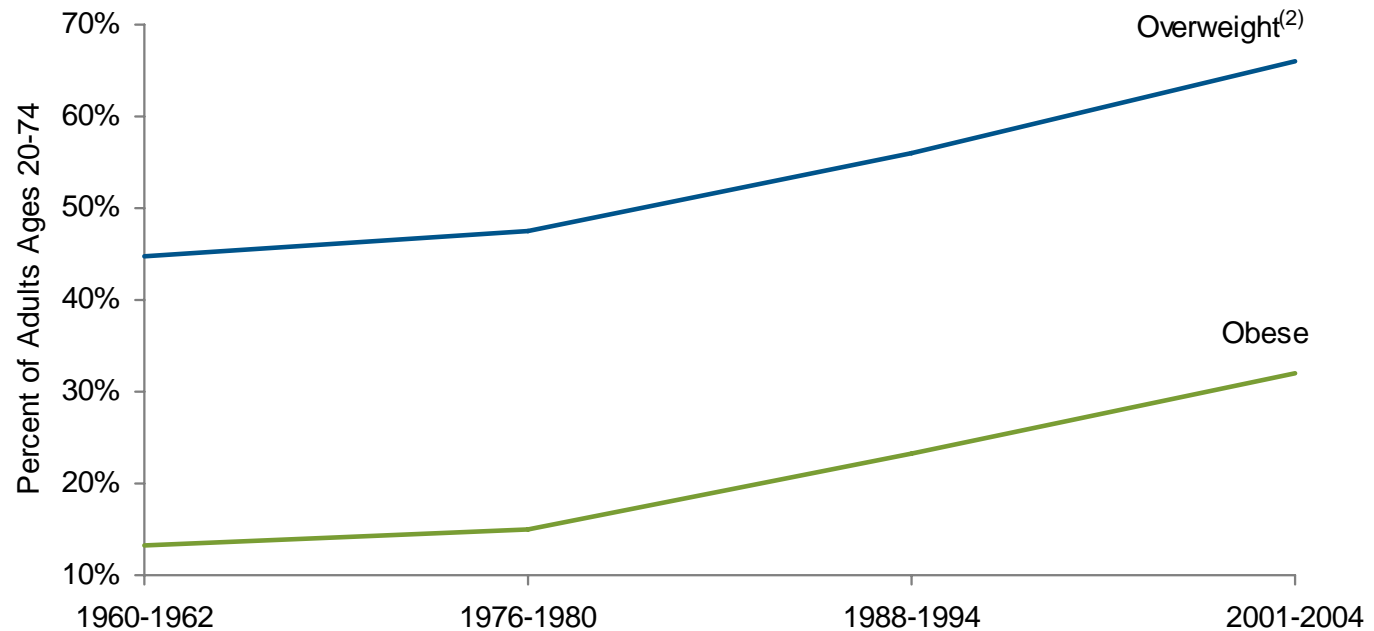
Chart 7.7: Percent of Adults with Hypertension by Sex⁽¹⁾, 1988-1994 and 2000-2004



Source: National Center for Health Statistics. (2007). *Health, United States, 2007 with Chartbook on Trends in the Health of Americans*. Hyattsville, MD.

⁽¹⁾ Data are age-adjusted to 2000 standard population.

Chart 7.8: Percent of Adults Who Are Overweight and Obese⁽¹⁾,
1960-2004

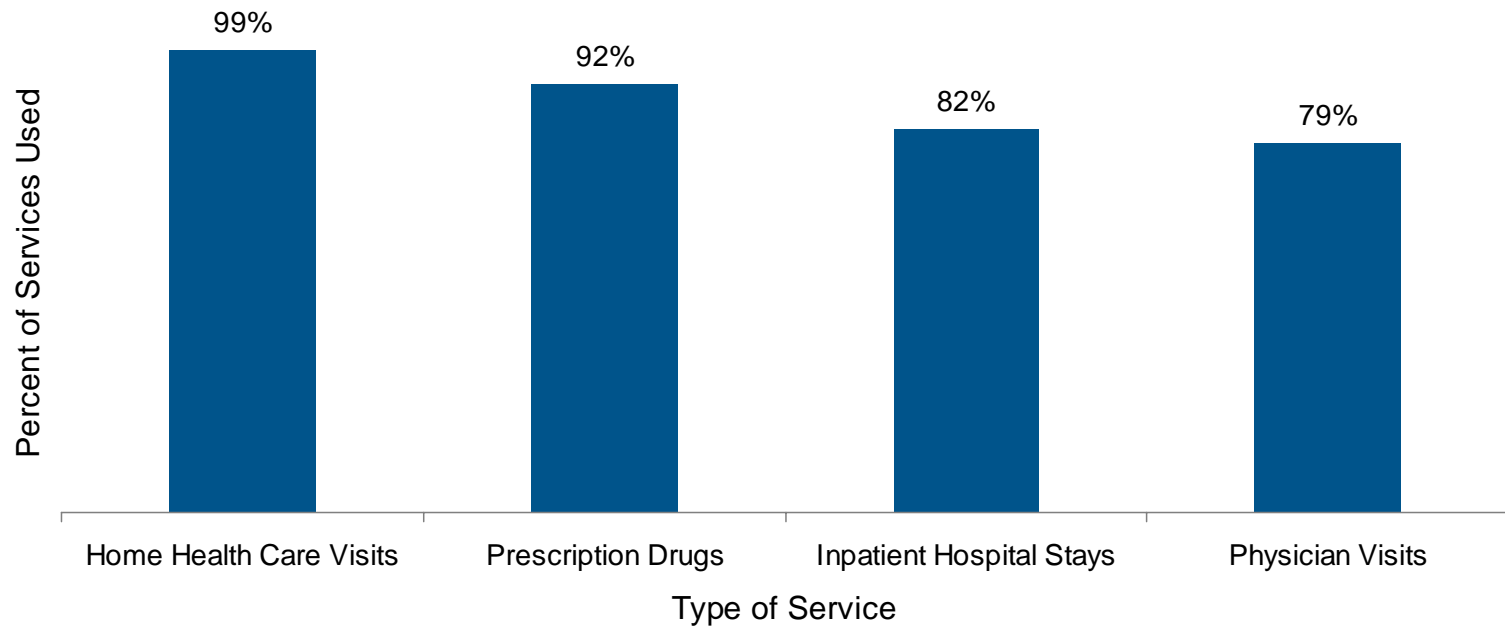


Source: National Center for Health Statistics. (2007). *Health, United States, 2007 with Chartbook on Trends in the Health of Americans*. Hyattsville, MD.

⁽¹⁾ Data are age-adjusted to 2000 standard population.

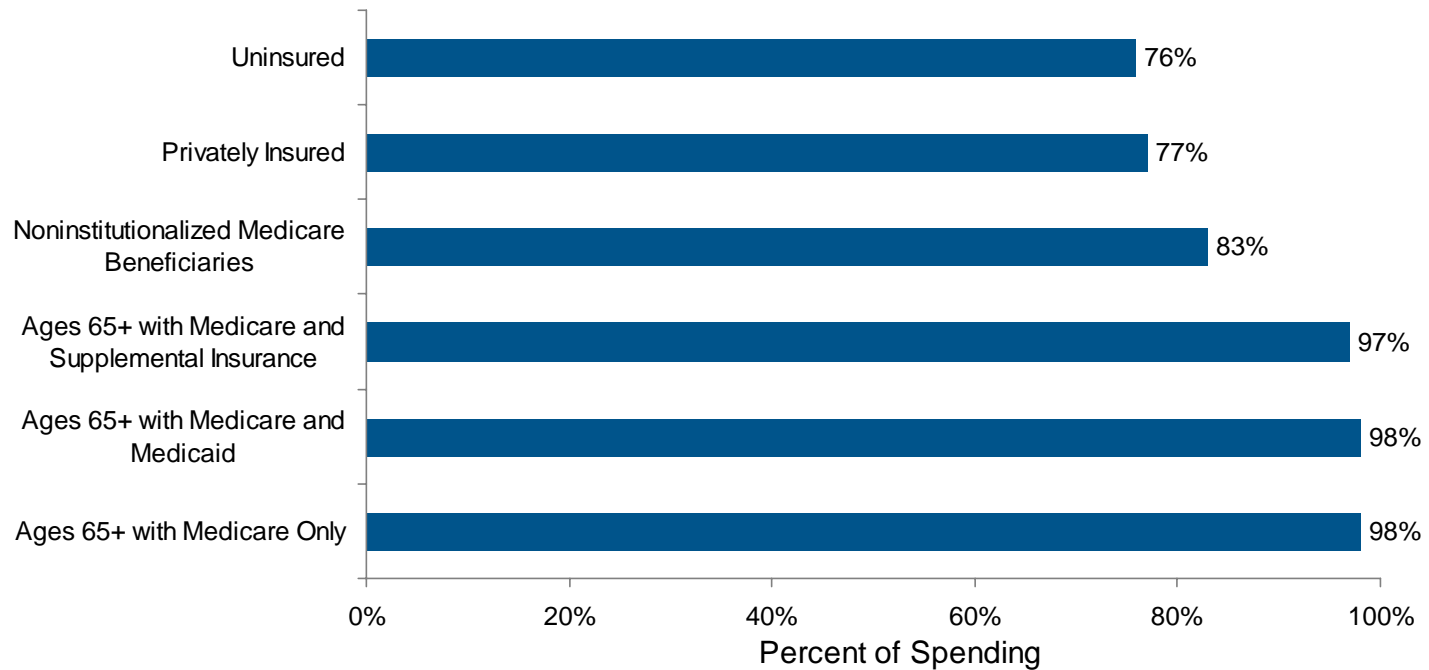
⁽²⁾ Overweight includes obesity.

Chart 7.9: Percent of Services Used by People with Chronic Conditions, 2004



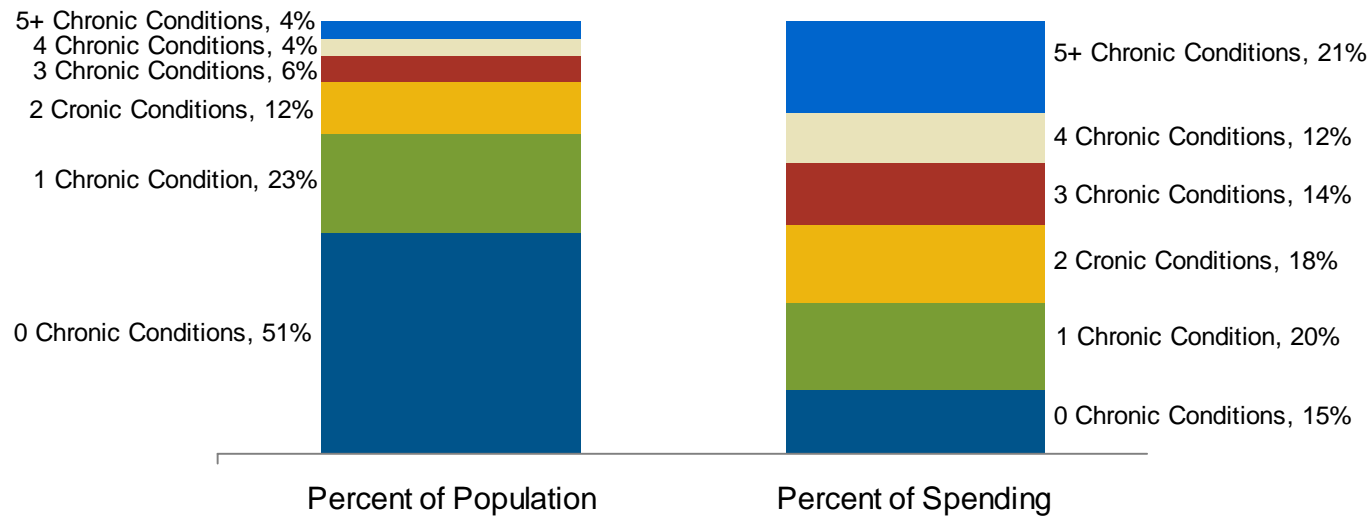
Source: Anderson, G. (2007). *Chronic Conditions: Making the Case for Ongoing Care*. Baltimore, MD: Johns Hopkins University.

Chart 7.10: Percent of Spending for Individuals with Chronic Conditions by Insurance Status, 2004



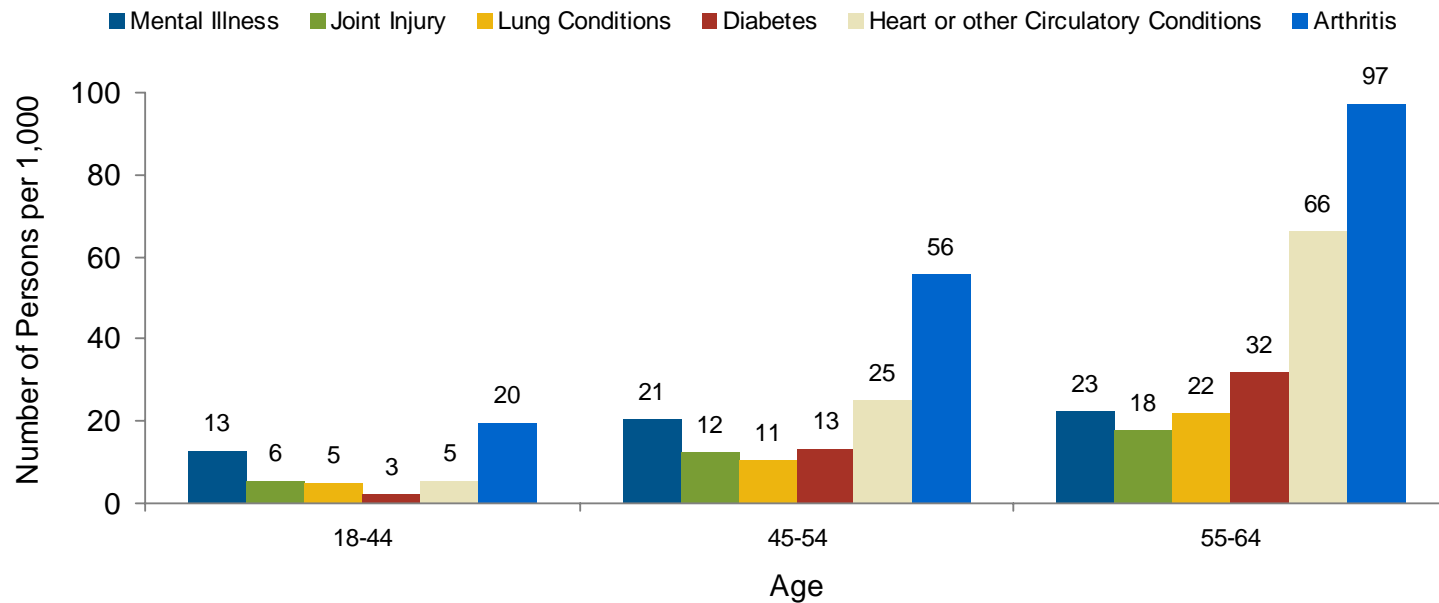
Source: Anderson, G. (2007). *Chronic Conditions: Making the Case for Ongoing Care*. Baltimore, MD: Johns Hopkins University.

Chart 7.11: Percent of Population vs. Percent of Spending, by Number of Chronic Conditions, 2004



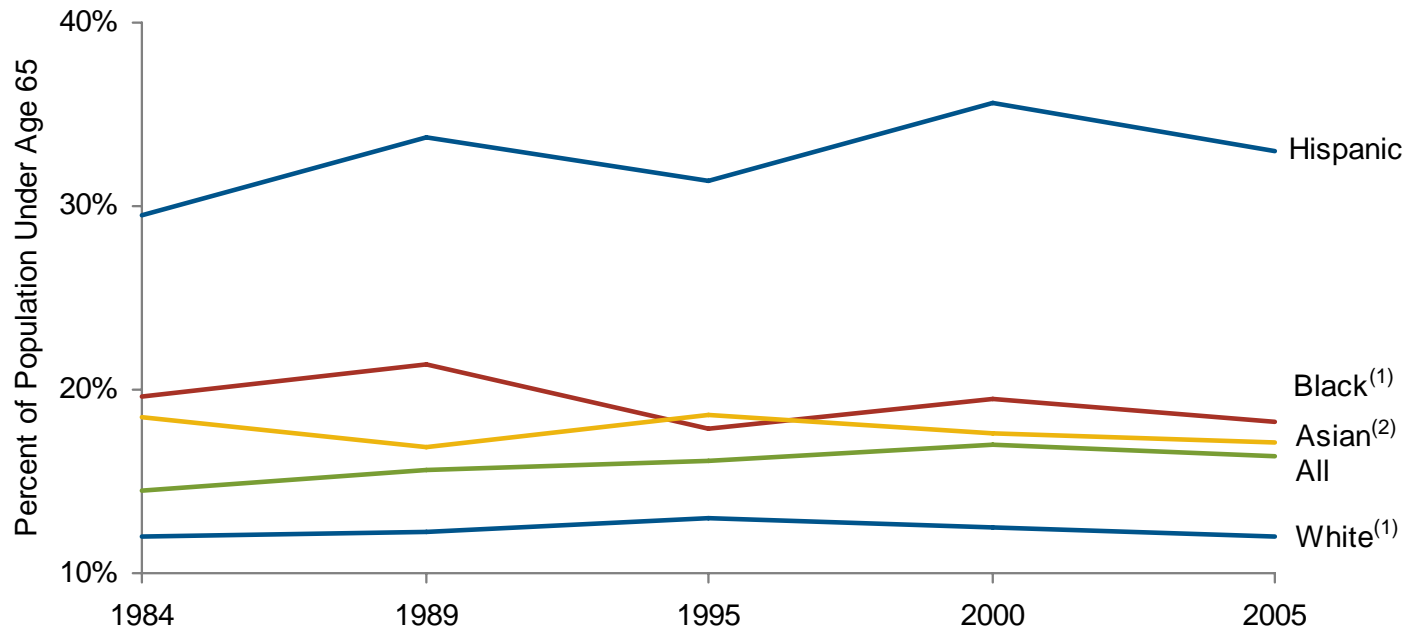
Source: Anderson, G. (2007). *Chronic Conditions: Making the Case for Ongoing Care*. Baltimore, MD: Johns Hopkins University.

Chart 7.12: Working Age Adults with Activity Limitations Due to Chronic Conditions, by Condition and Age, 2004-2005



Source: National Center for Health Statistics. (2007). *Health, United States, 2007 with Chartbook on Trends in the Health of Americans*. Hyattsville, MD.

Chart 7.13: Percent Uninsured by Race, 1984-2005

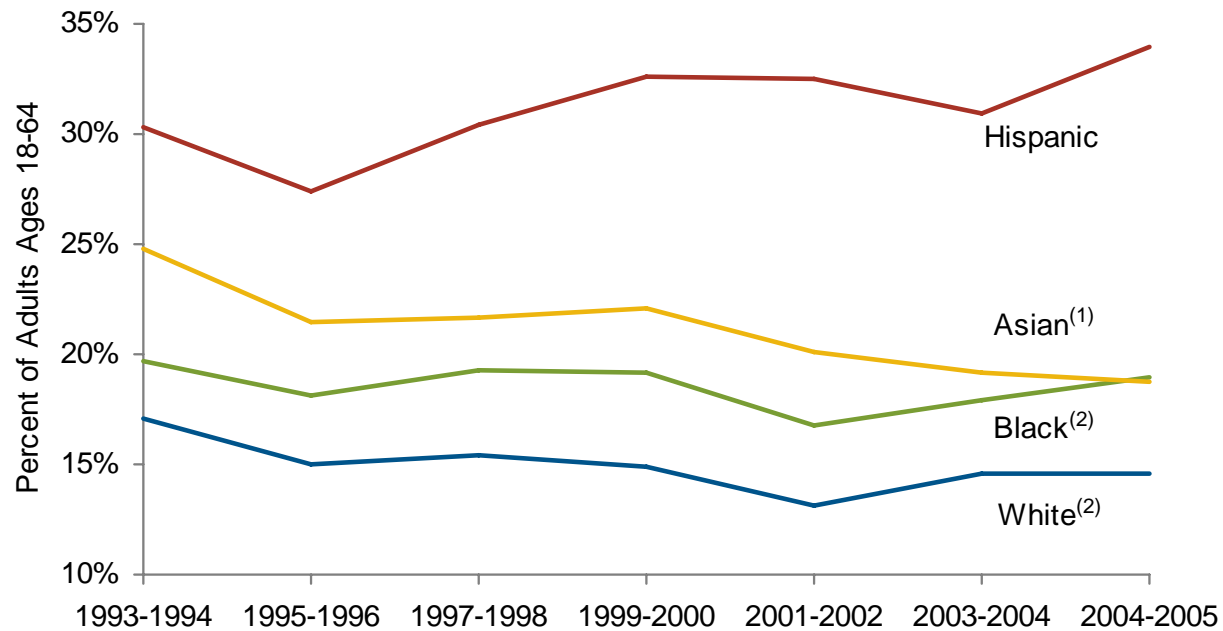


Source: National Center for Health Statistics. (2007). *Health, United States, 2007 with Chartbook on Trends in the Health of Americans*. Hyattsville, MD.

⁽¹⁾ Includes individuals of non-Hispanic origin only.

⁽²⁾ Includes individuals of Hispanic and non-Hispanic origin.

Chart 7.14: Percent of Adults with No Usual Source of Care by Race, 1993-2005

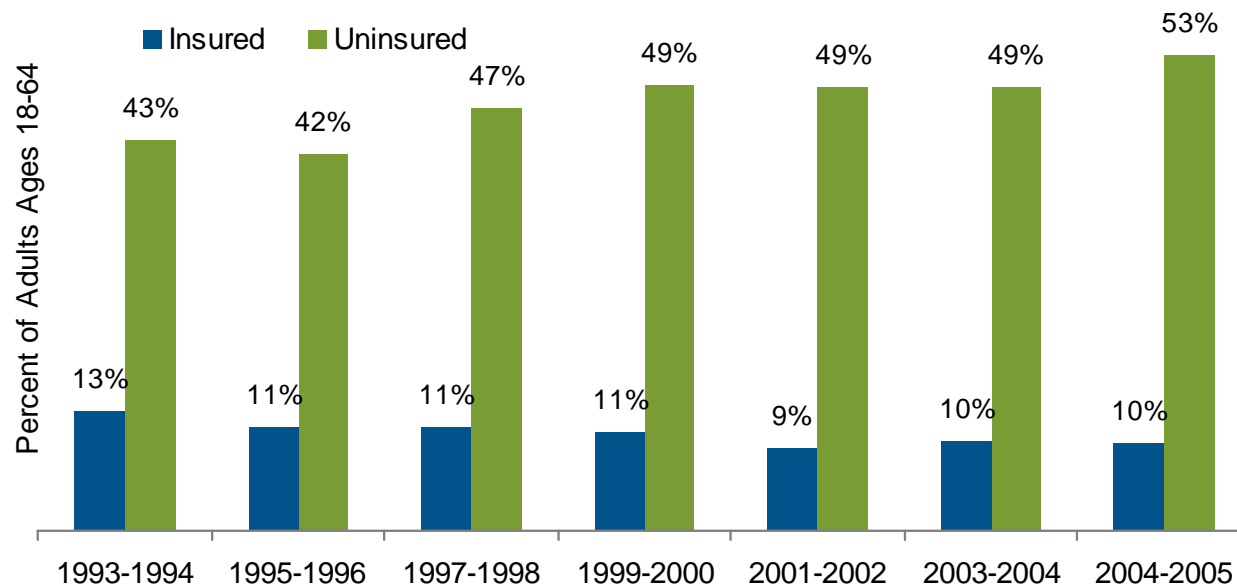


Source: National Center for Health Statistics. (2007). *Health, United States, 2007 with Chartbook on Trends in the Health of Americans*. Hyattsville, MD.

⁽¹⁾ Includes individuals of Hispanic and non-Hispanic origin.

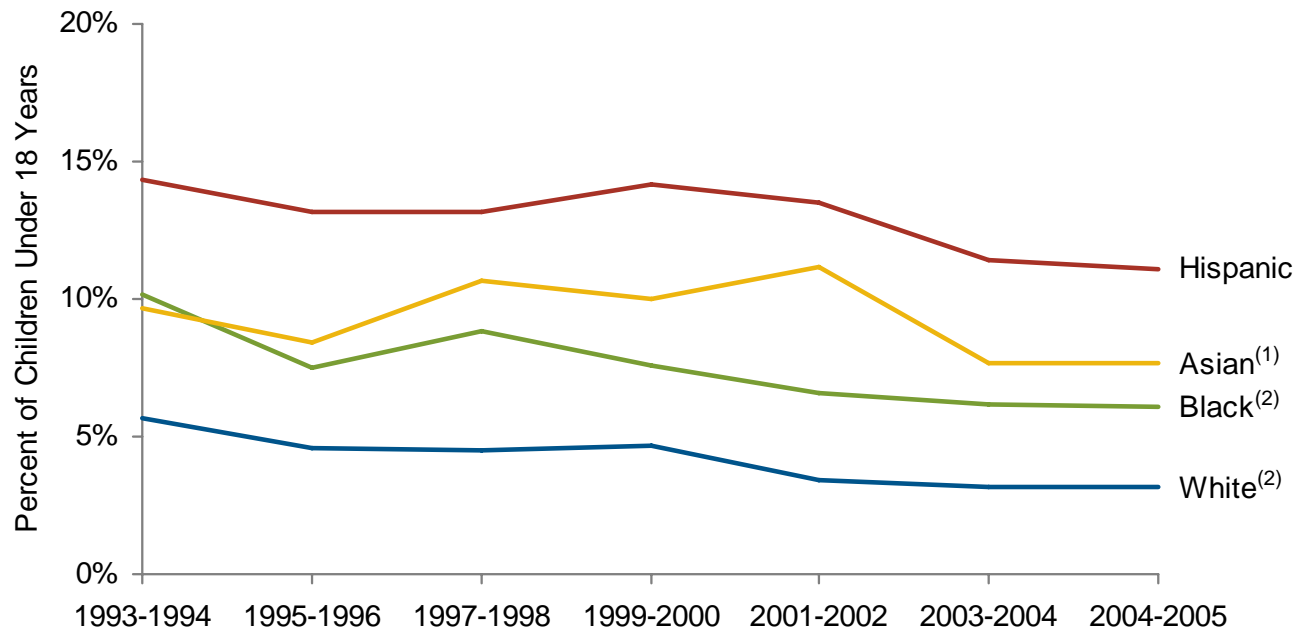
⁽²⁾ Includes individuals of non-Hispanic origin only.

Chart 7.15: Percent of Adults with No Usual Source of Care by Insurance Status, 1993-2005



Source: National Center for Health Statistics. (2007). *Health, United States, 2007 with Chartbook on Trends in the Health of Americans*. Hyattsville, MD.

Chart 7.16: Percent of Children with No Usual Source of Care by Race, 1993-2005

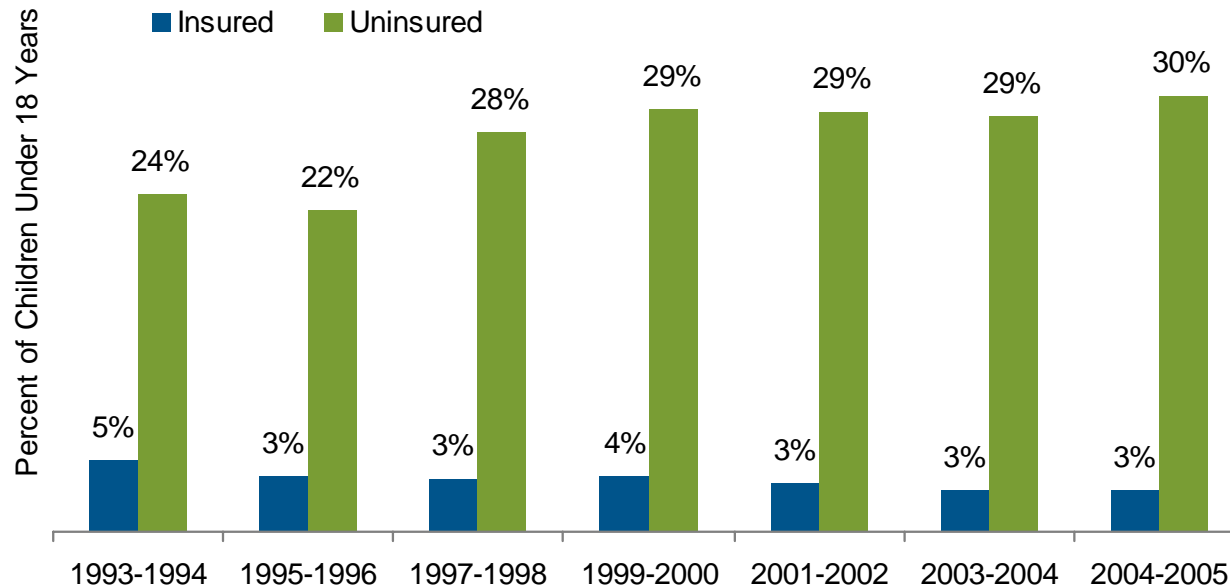


Source: National Center for Health Statistics. (2007). *Health, United States, 2007 with Chartbook on Trends in the Health of Americans*. Hyattsville, MD.

⁽¹⁾ Includes individuals of Hispanic and non-Hispanic origin.

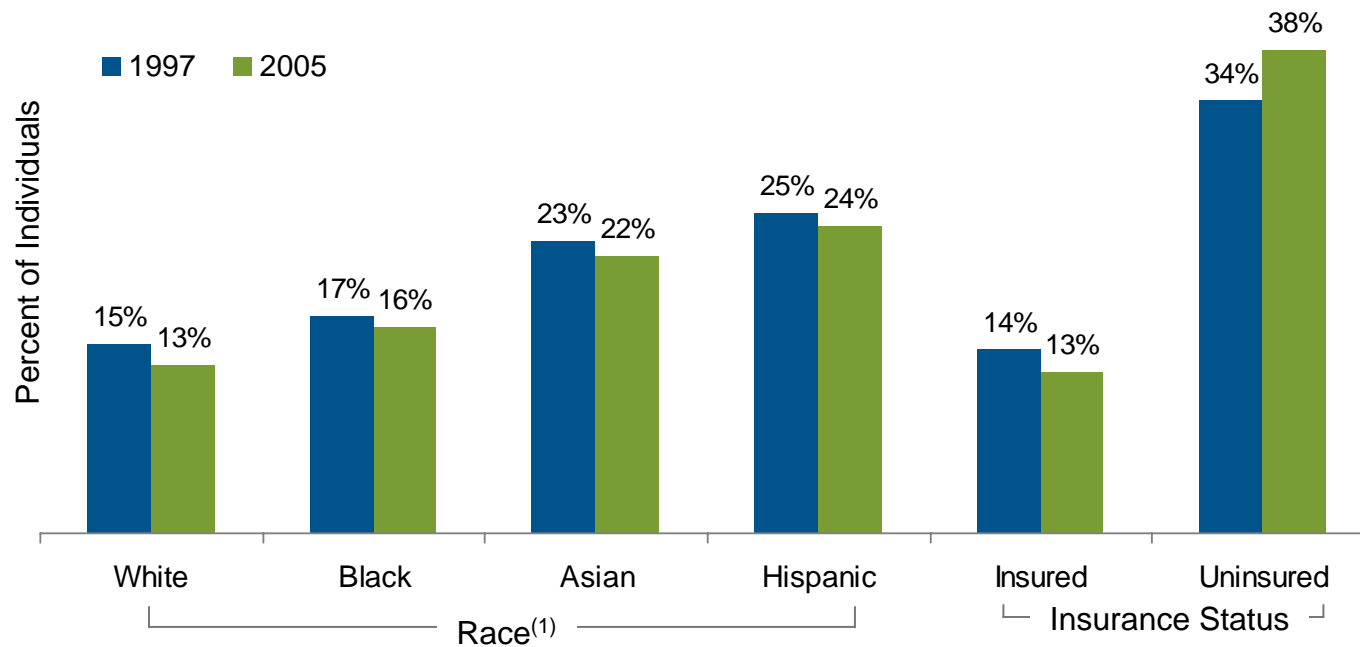
⁽²⁾ Includes individuals of non-Hispanic origin only.

Chart 7.17: Percent of Children with No Usual Source of Care by Insurance Status, 1993-2005



Source: National Center for Health Statistics. (2007). *Health, United States, 2007 with Chartbook on Trends in the Health of Americans*. Hyattsville, MD.

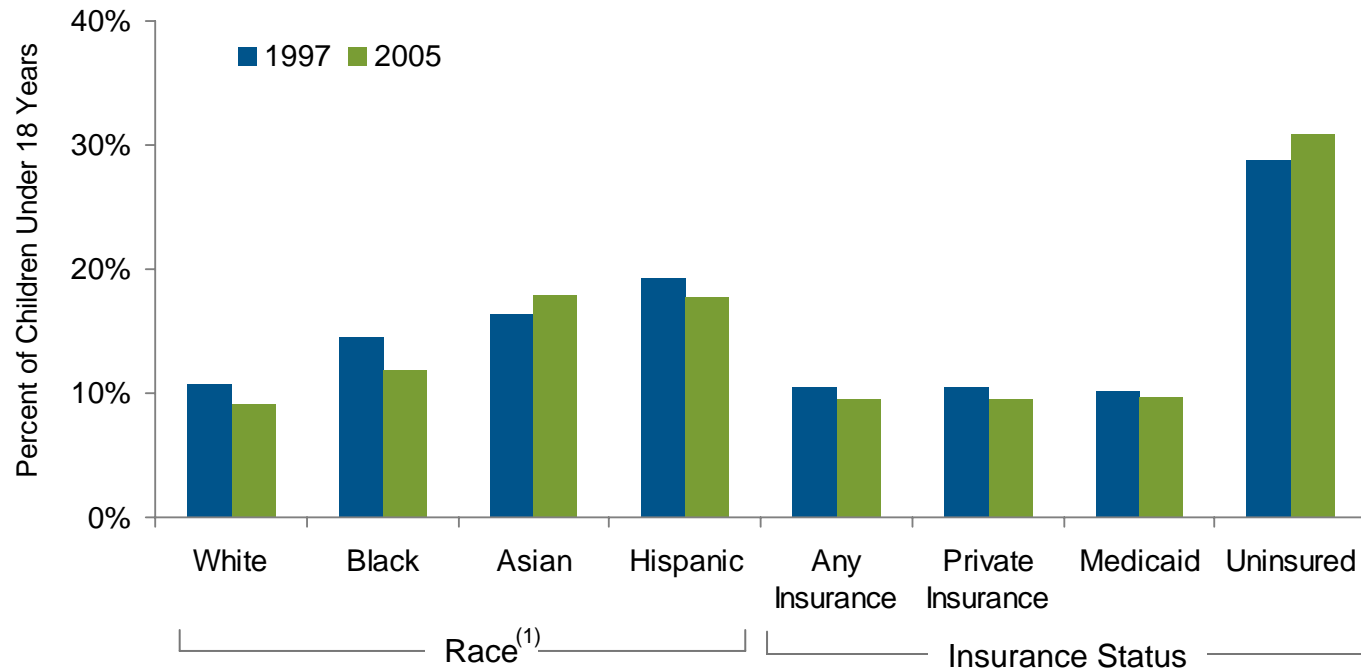
Chart 7.18: Percent of Individuals with No Healthcare Visits by Race, Insurance Status, 1997 and 2005



Source: National Center for Health Statistics. (2007). *Health, United States, 2007 with Chartbook on Trends in the Health of Americans*. Hyattsville, MD.

(1) White and Black include individuals of non-Hispanic origin only. Asian includes individuals of Hispanic and non-Hispanic origin.

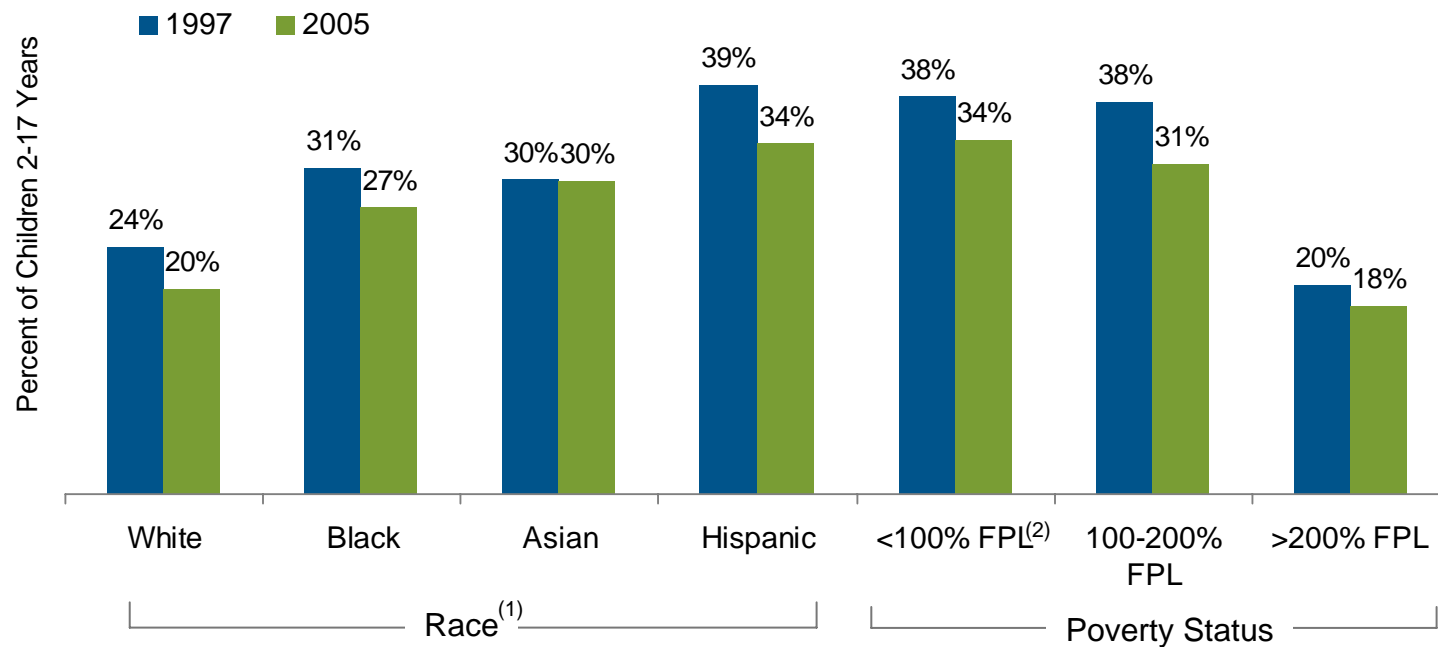
Chart 7.19: Percent of Children with No Healthcare Visits by Race, Insurance Status, 1997 and 2005



Source: National Center for Health Statistics. (2007). *Health, United States, 2007 with Chartbook on Trends in the Health of Americans*. Hyattsville, MD.

(1) White and Black include individuals of non-Hispanic origin only. Asian includes individuals of Hispanic and non-Hispanic origin.

Chart 7.20: Percent of Children with No Dental Visits by Race, Poverty Status, 1997 and 2005

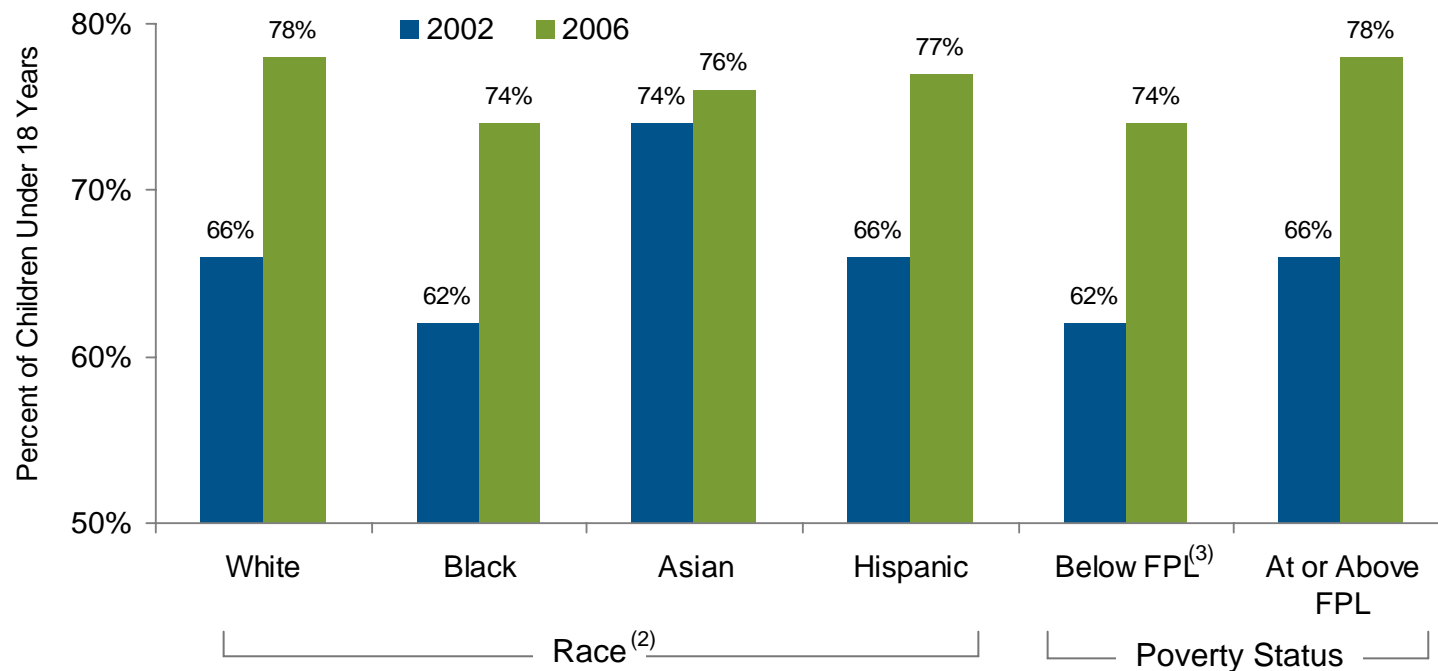


Source: National Center for Health Statistics. (2007). *Health, United States, 2007 with Chartbook on Trends in the Health of Americans*. Hyattsville, MD.

(1) White and Black include individuals of non-Hispanic origin only. Asian includes individuals of Hispanic and non-Hispanic origin.

(2) FPL = federal poverty limit.

Chart 7.21: Percent of Children Vaccinated⁽¹⁾ by Race, Poverty Status, 2002 and 2006



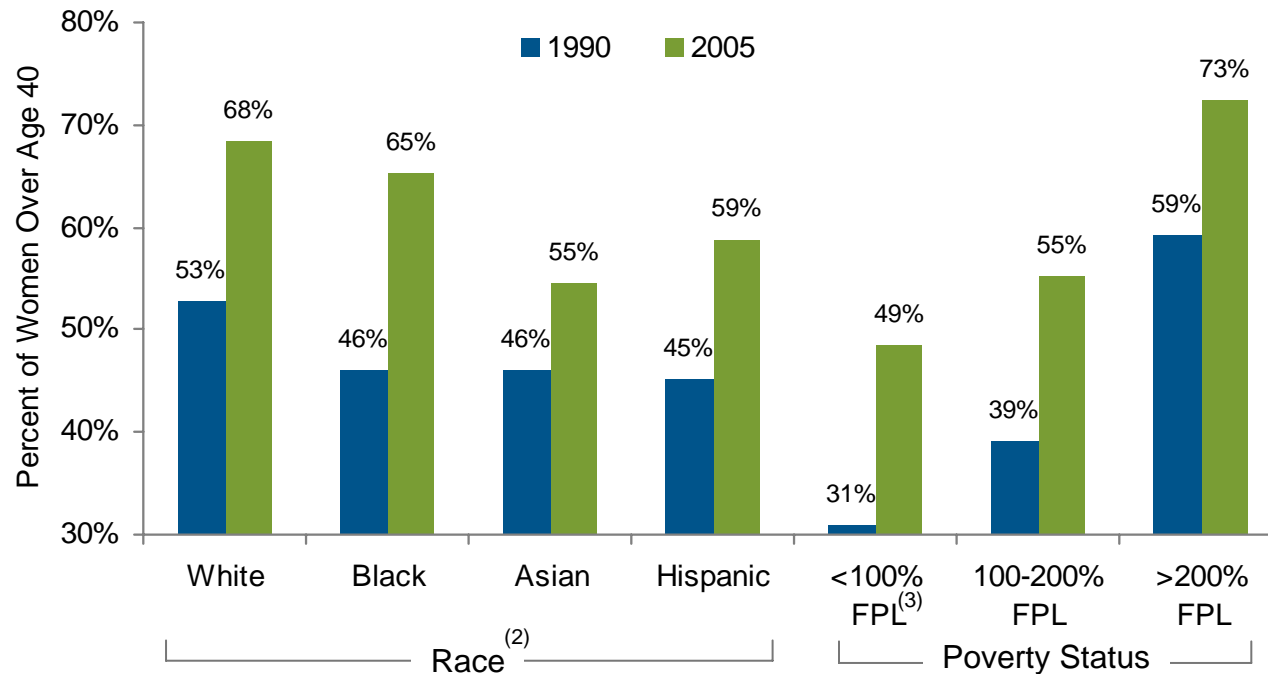
Source: National Center for Health Statistics. (2007). *Health, United States, 2007 with Chartbook on Trends in the Health of Americans*. Hyattsville, MD.

(1) Vaccinations include DTP, Polio, MMR, Hib, Hepatitis B, Varicella, and PCV.

(2) White, Black, and Asian include individuals of non-Hispanic origin only.

(3) FPL = federal poverty limit.

Chart 7.22: Percent of Women Receiving Mammography⁽¹⁾ by Race, Poverty Status, 1990 and 2005



Source: National Center for Health Statistics. (2007). *Health, United States, 2007 with Chartbook on Trends in the Health of Americans*. Hyattsville, MD.

(1) Indicates use of mammography in two years prior to 1990 and 2005.

(2) White and Black include individuals of non-Hispanic origin only. Asian includes individuals of Hispanic and non-Hispanic origin.

(3) Note: FPL = federal poverty limit.