



CHAPTER 2

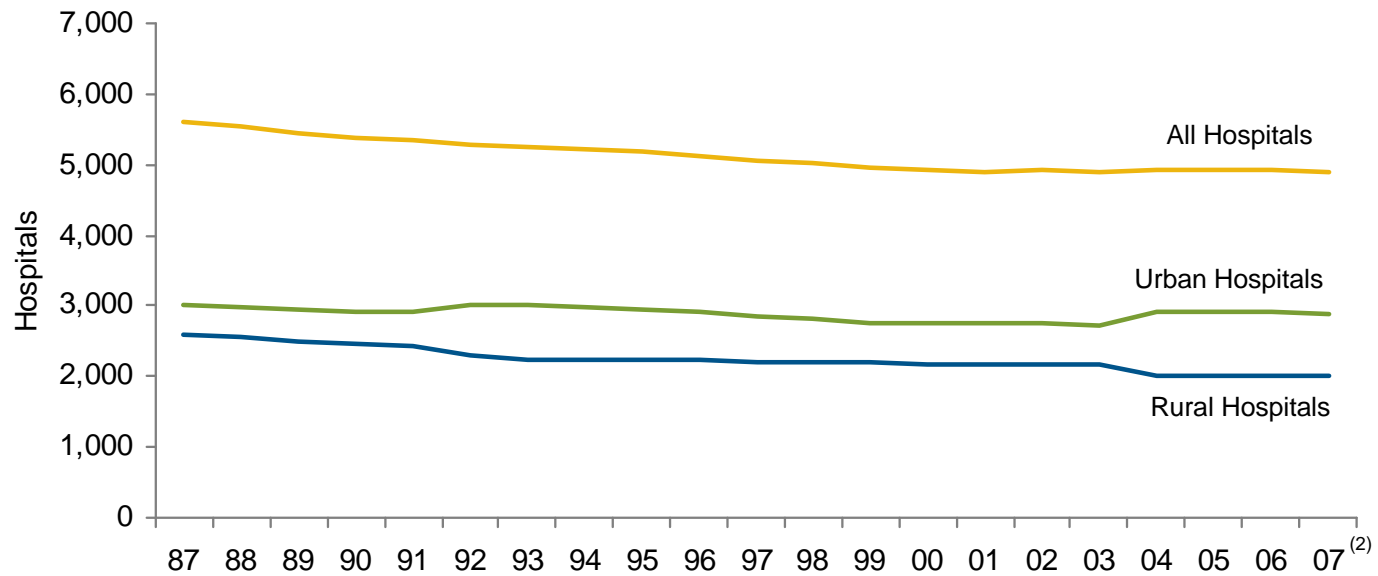
Organizational Trends

TABLE OF CONTENTS

CHAPTER 2.0: **Organizational Trends**

- Chart 2.1: Number of Community Hospitals, 1987 – 2007
- Chart 2.2: Number of Beds and Number of Beds per 1,000 Persons, 1987 – 2007
- Chart 2.3: Beds per 1,000 by State, 2007
- Chart 2.4: Number of Hospitals in Health Systems, 2000 – 2007
- Chart 2.5: Percent of Outpatient Surgeries by Facility Type, 1981 – 2005
- Chart 2.6: Number of Outpatient Surgery Centers, 2003 – 2008
- Chart 2.7: Percentage of Hospitals with Physician Affiliates by Type of Relationship, 1997 – 2007
- Chart 2.8: Percentage of Hospitals with Insurance Products by Type of Insurance, 1997 – 2007
- Chart 2.9: Percentage of Hospitals Offering “Non-hospital” Services, 1997 – 2007
- Chart 2.10: Announced Hospital Mergers and Acquisitions, 1998 – 2007

Chart 2.1: Number of Community Hospitals,⁽¹⁾ 1987 – 2007

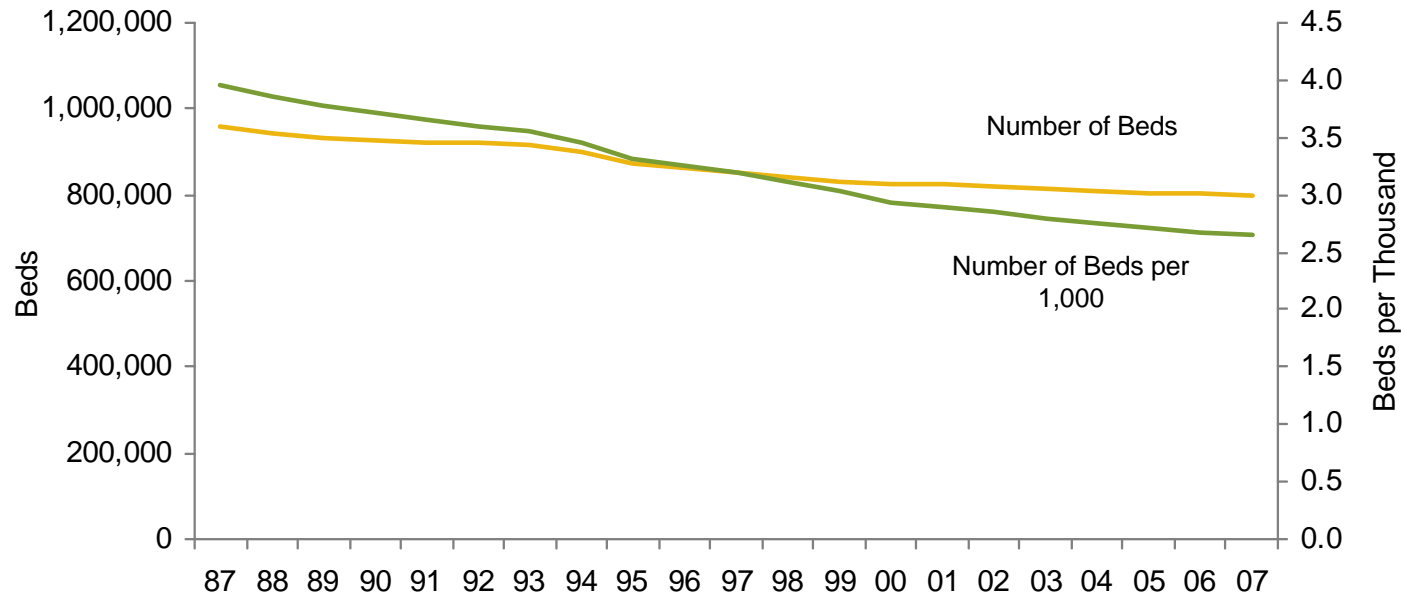


Source: Avalere Health analysis of American Hospital Association Annual Survey data, 2007, for community hospitals.

⁽¹⁾ All nonfederal, short-term general, and specialty hospitals whose facilities and services are available to the public.

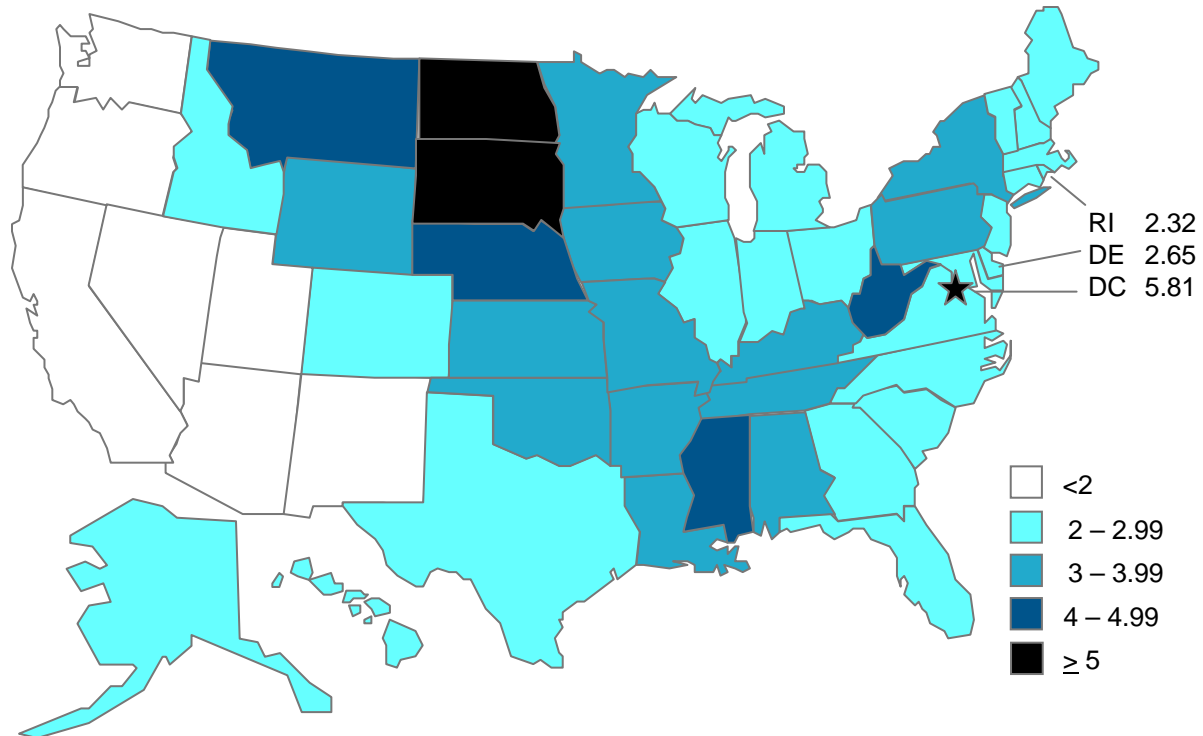
⁽²⁾ Data on the number of urban and rural hospitals in 2004 and beyond were collected using coding different from previous years to reflect new Centers for Medicare & Medicaid Services wage area designations.

Chart 2.2: Number of Beds and Number of Beds per 1,000 Persons, 1987 – 2007



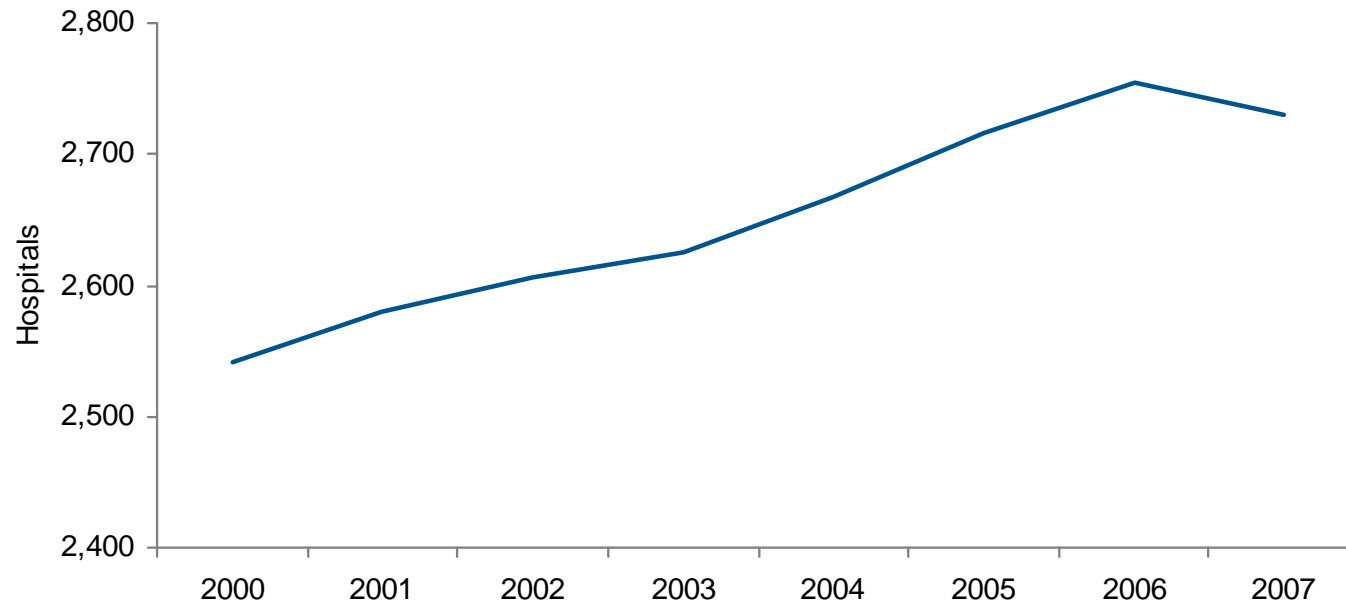
Source: Avalere Health analysis of American Hospital Association Annual Survey data, 2007, for community hospitals.

Chart 2.3: Beds per 1,000 by State, 2007



Source: Avalere Health analysis of American Hospital Association Annual Survey data, 2007, for community hospitals. US Census Bureau: National and State Population Estimates, July 1, 2007.
Link: <http://www.census.gov/popest/states/tables/NST-EST2007-01.xls>.

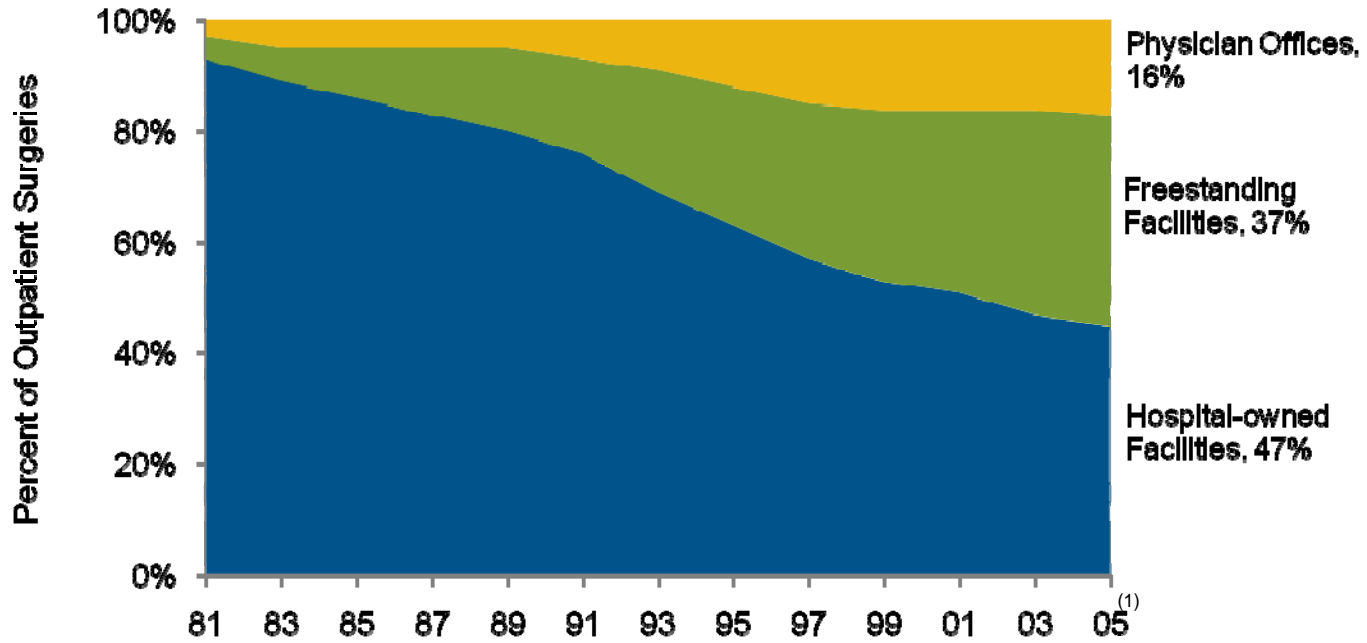
Chart 2.4: Number of Hospitals in Health Systems,⁽¹⁾ 2000 – 2007



Source: Avalere Health analysis of American Hospital Association Annual Survey data, 2007, for community hospitals.

⁽¹⁾ Hospitals that are part of a corporate body that may own and/or manage health provider facilities or health-related subsidiaries as well as non-health-related facilities including freestanding and/or subsidiary corporations.

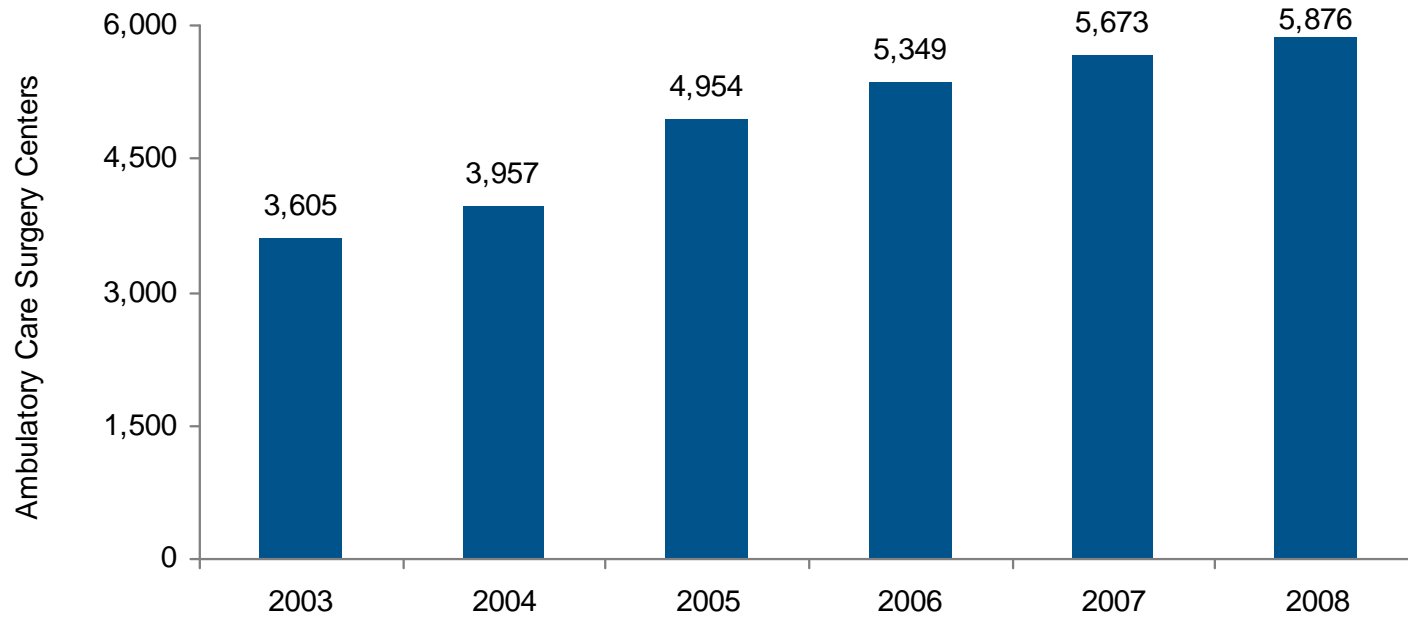
Chart 2.5: Percent of Outpatient Surgeries by Facility Type, 1981 – 2005



Source: Verispan, *Diagnostic Imaging Center Profiling Solution*, 2004.

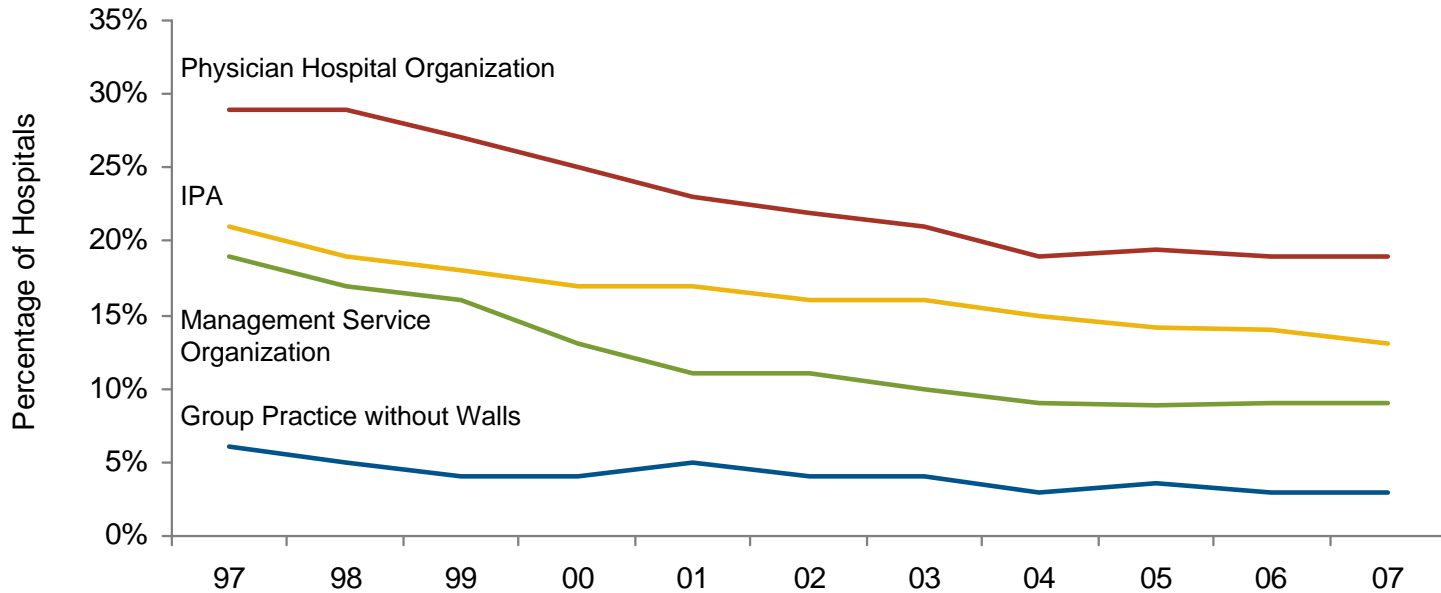
⁽¹⁾ 2005 values are estimated based upon current trends.

Chart 2.6: Number of Outpatient Surgery Centers, 2003 – 2008



Source: SDI. (2008). *2008 Outpatient Surgery Center Market Report*.

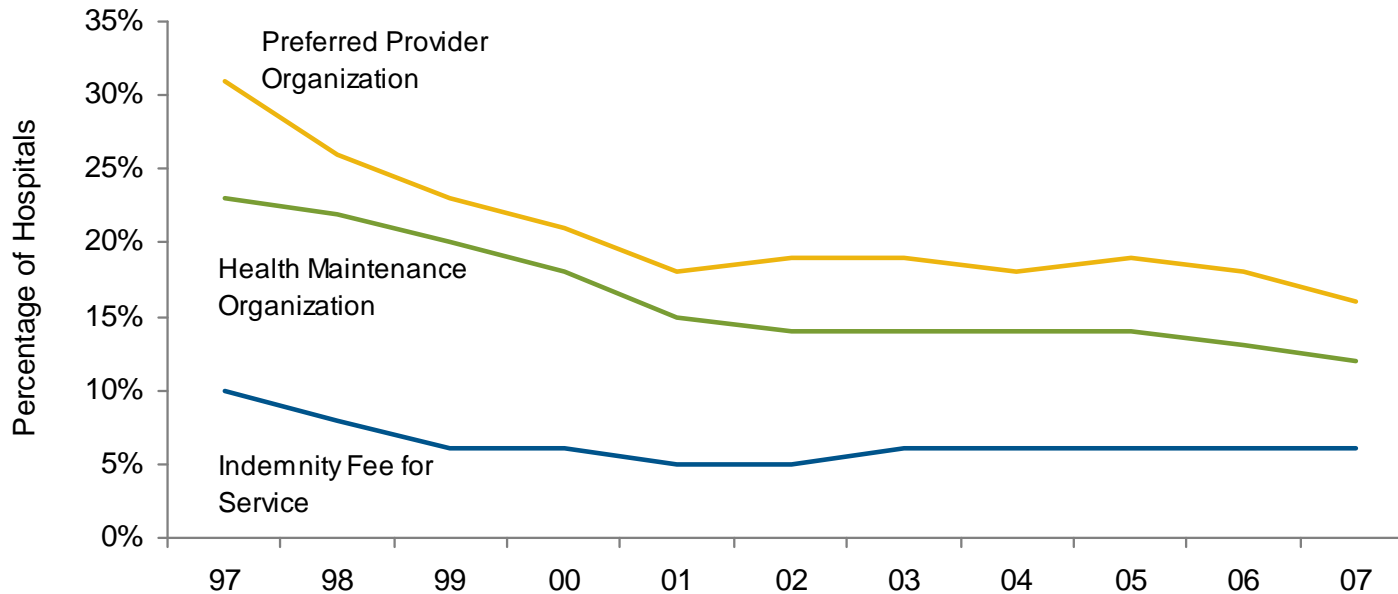
Chart 2.7: Percentage of Hospitals with Physician Affiliates⁽¹⁾ by Type of Relationship, 1997 – 2007



Source: Avalere Health analysis of American Hospital Association Annual Survey data, 2007, for community hospitals.

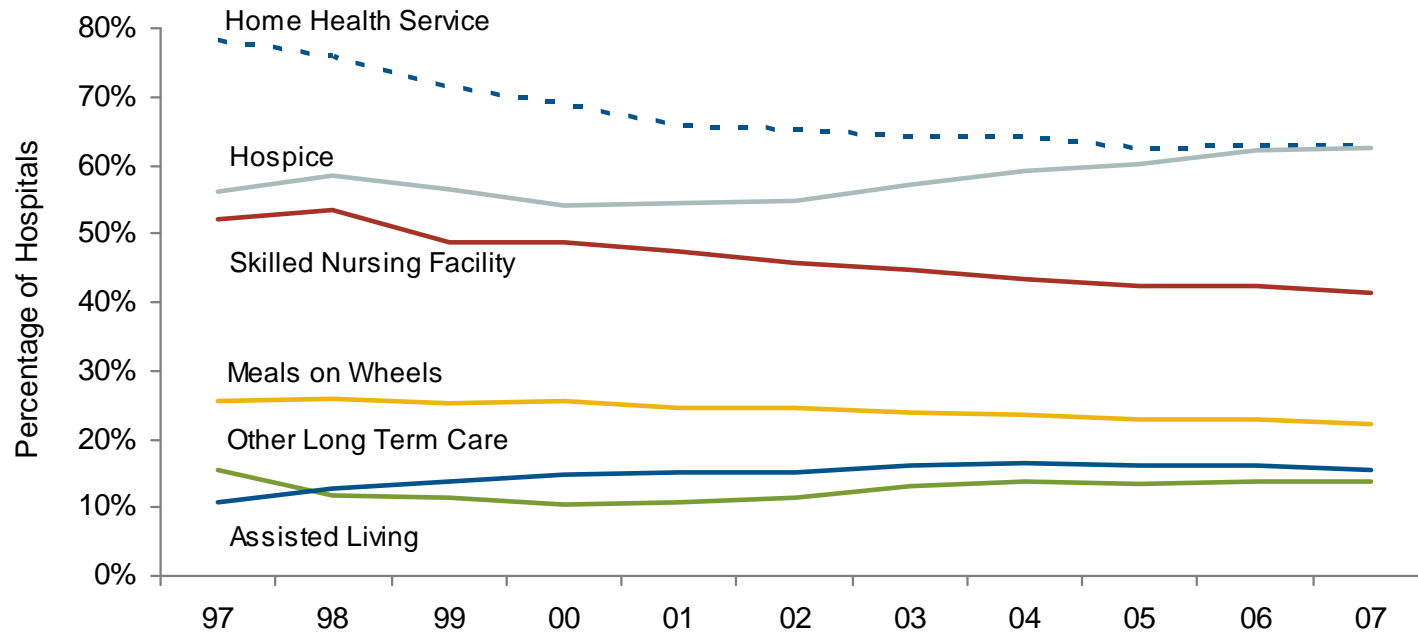
⁽¹⁾ A hospital is considered to have a physician relationship if the relationship exists as part of the hospital or a system or network of which the hospital is a part.

Chart 2.8: Percentage of Hospitals with Insurance Products by Type of Insurance, 1997 – 2007



Source: Avalere Health analysis of American Hospital Association Annual Survey data, 2007, for community hospitals.

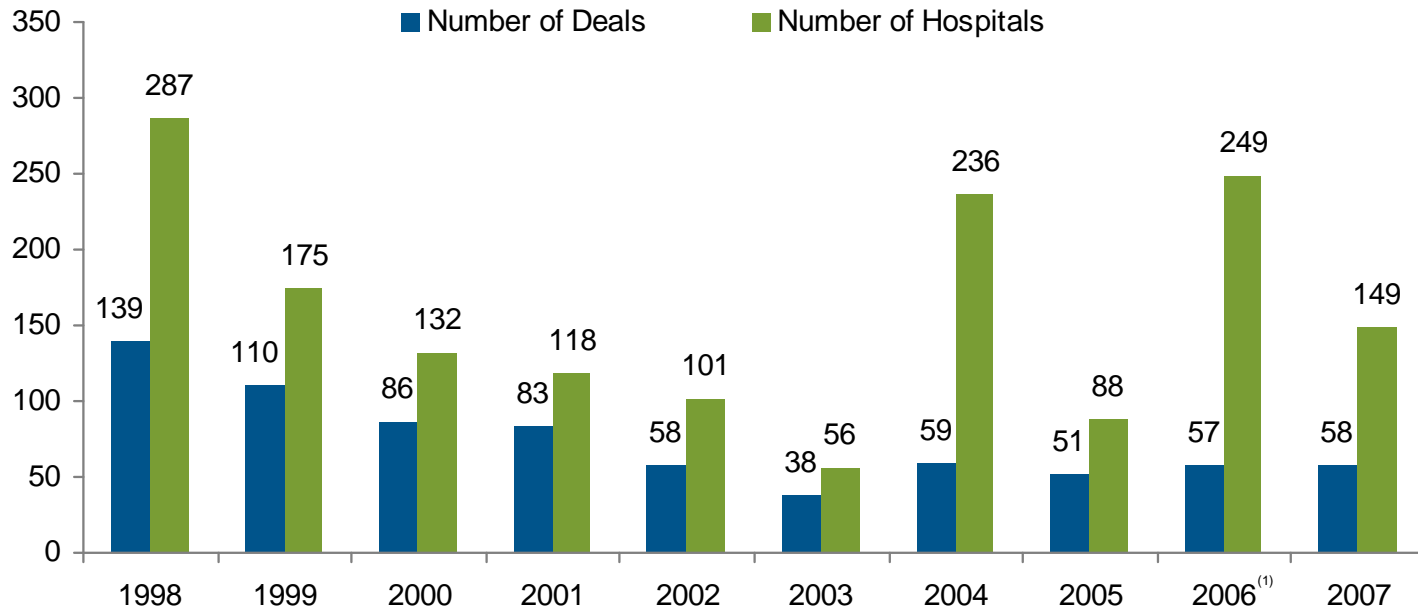
Chart 2.9: Percentage of Hospitals Offering “Non-hospital” Services,⁽¹⁾ 1997 – 2007



Source: Avalere Health analysis of American Hospital Association Annual Survey data, 2007, for community hospitals.

⁽¹⁾ Includes services offered in hospital, health system, network or joint venture.

Chart 2.10: Announced Hospital Mergers and Acquisitions, 1998 – 2007



Source: Irving Levin Associates, Inc., *The Health Care Acquisition Report*, Thirteenth Edition, 2008.

⁽¹⁾ In 2006, the privatization of HCA, Inc. affected 176 acute-care hospitals. The acquisition was the largest health care transaction ever announced.