



CHAPTER 2

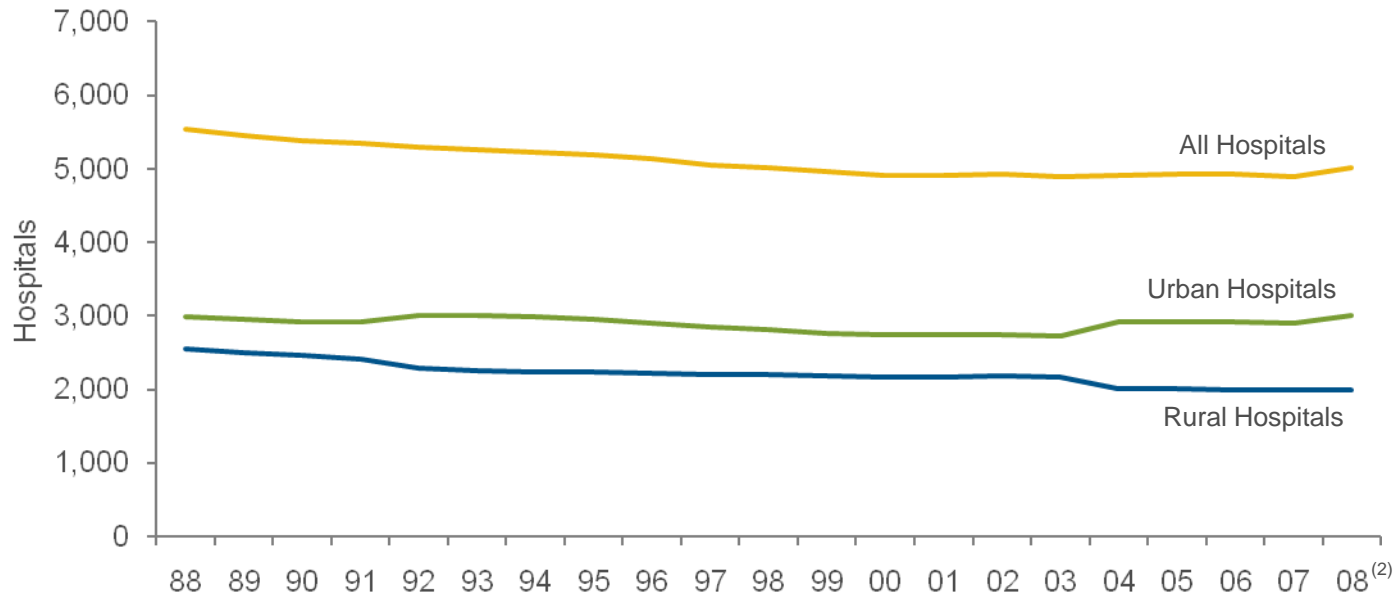
Organizational Trends

TABLE OF CONTENTS

CHAPTER 2.0: **Organizational Trends**

- Chart 2.1: Number of Community Hospitals, 1988 – 2008
- Chart 2.2: Number of Beds and Number of Beds per 1,000 Persons, 1988 – 2008
- Chart 2.3: Beds per 1,000 by State, 2008
- Chart 2.4: Number of Hospitals in Health Systems, 2000 – 2008
- Chart 2.5: Number of Medicare-approved Ambulatory Surgical Centers, 2003 – 2008
- Chart 2.6: Percentage of Hospitals with Physician Affiliates by Type of Relationship, 1998 – 2008
- Chart 2.7: Percentage of Hospitals with Insurance Products by Type of Insurance, 1998 – 2008
- Chart 2.8: Percentage of Hospitals Offering “Non-hospital” Services, 1998 – 2008
- Chart 2.9: Announced Hospital Mergers and Acquisitions, 1998 – 2008

Chart 2.1: Number of Community Hospitals,⁽¹⁾ 1988 – 2008

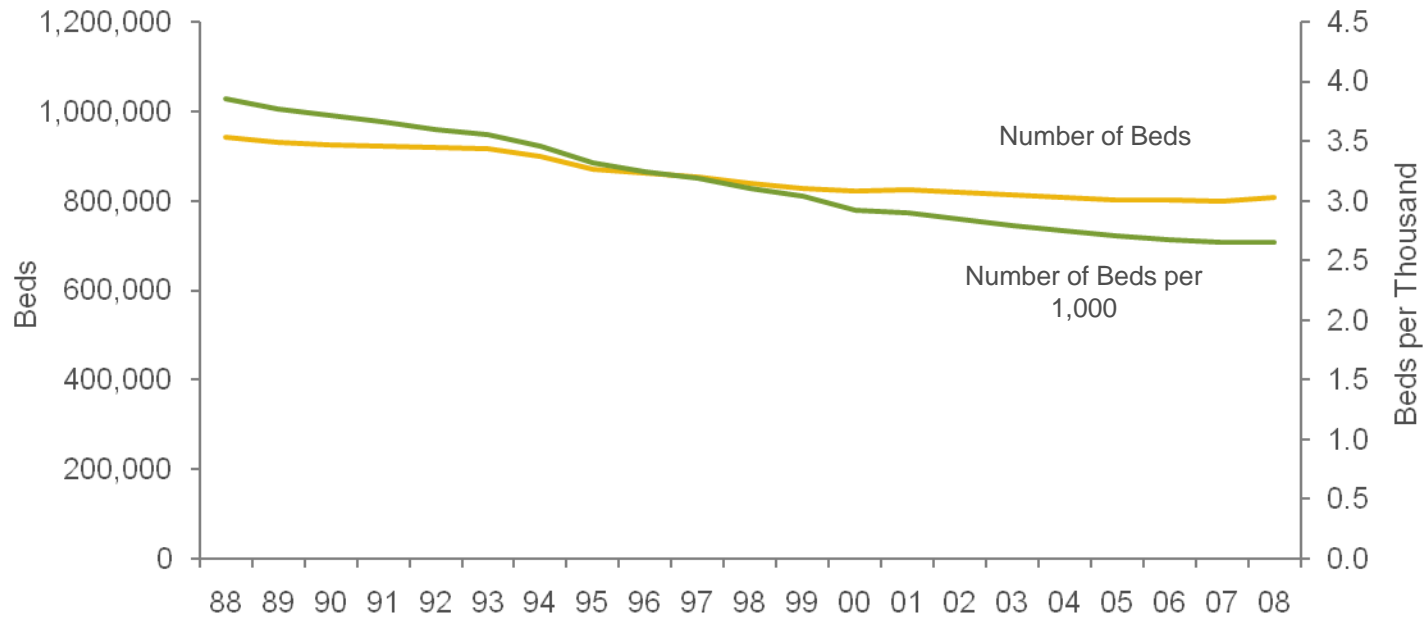


Source: Avalere Health analysis of American Hospital Association Annual Survey data, 2008, for community hospitals.

(1) All nonfederal, short-term general, and specialty hospitals whose facilities and services are available to the public.

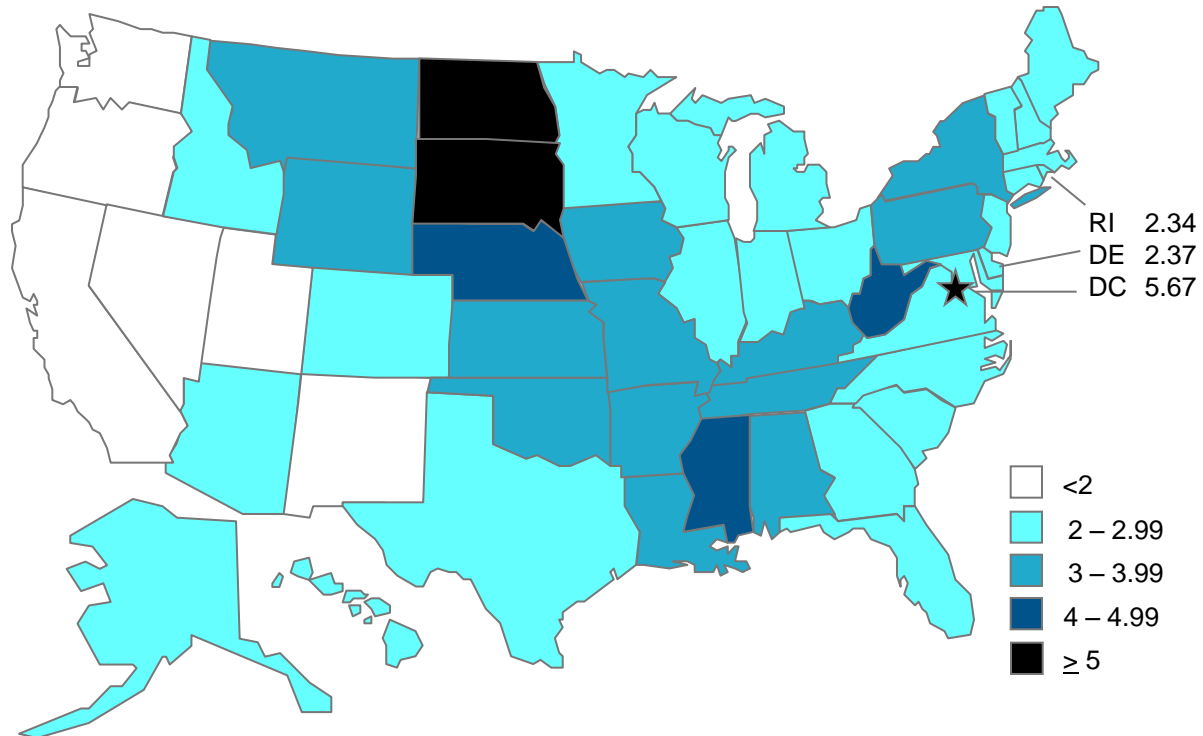
(2) Data on the number of urban and rural hospitals in 2004 and beyond were collected using coding different from previous years to reflect new Centers for Medicare & Medicaid Services wage area designations.

Chart 2.2: Number of Beds and Number of Beds per 1,000 Persons, 1988 – 2008



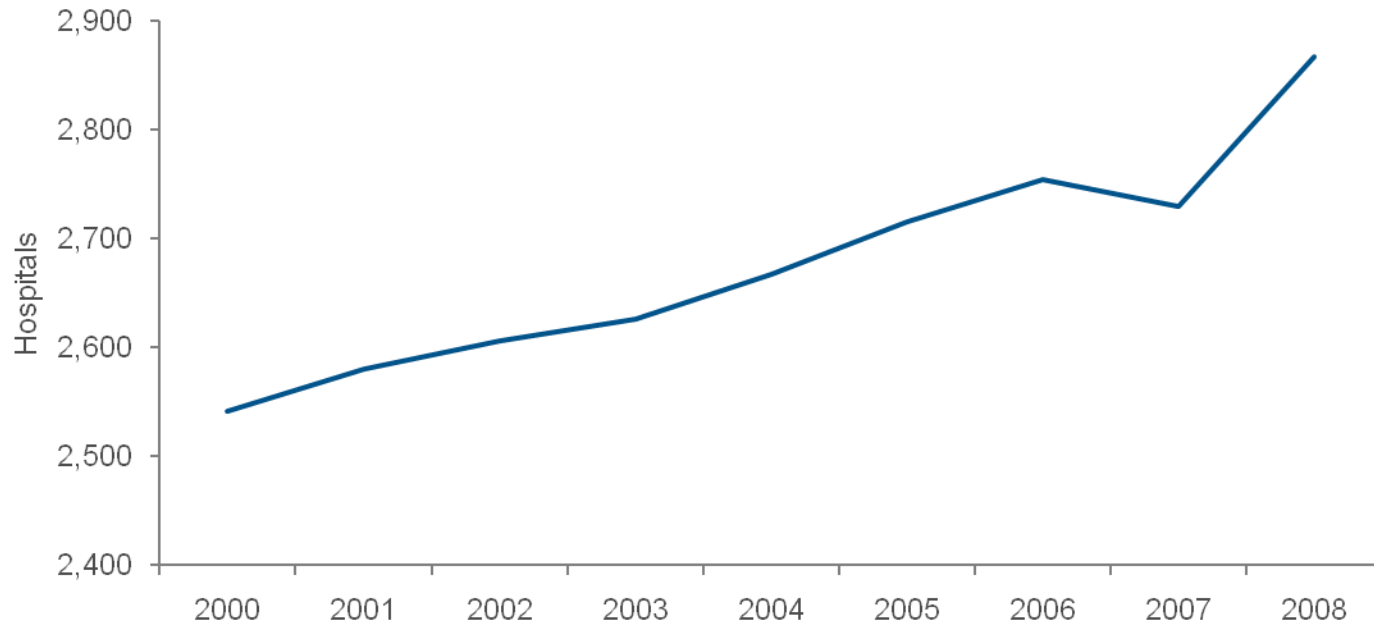
Source: Avalere Health analysis of American Hospital Association Annual Survey data, 2008, for community hospitals.

Chart 2.3: Beds per 1,000 by State, 2008



Source: Avalere Health analysis of American Hospital Association Annual Survey data, 2008, for community hospitals. US Census Bureau: National and State Population Estimates, July 1, 2008.
Link: <http://www.census.gov/popest/states/tables/NST-EST2008-01.xls>.

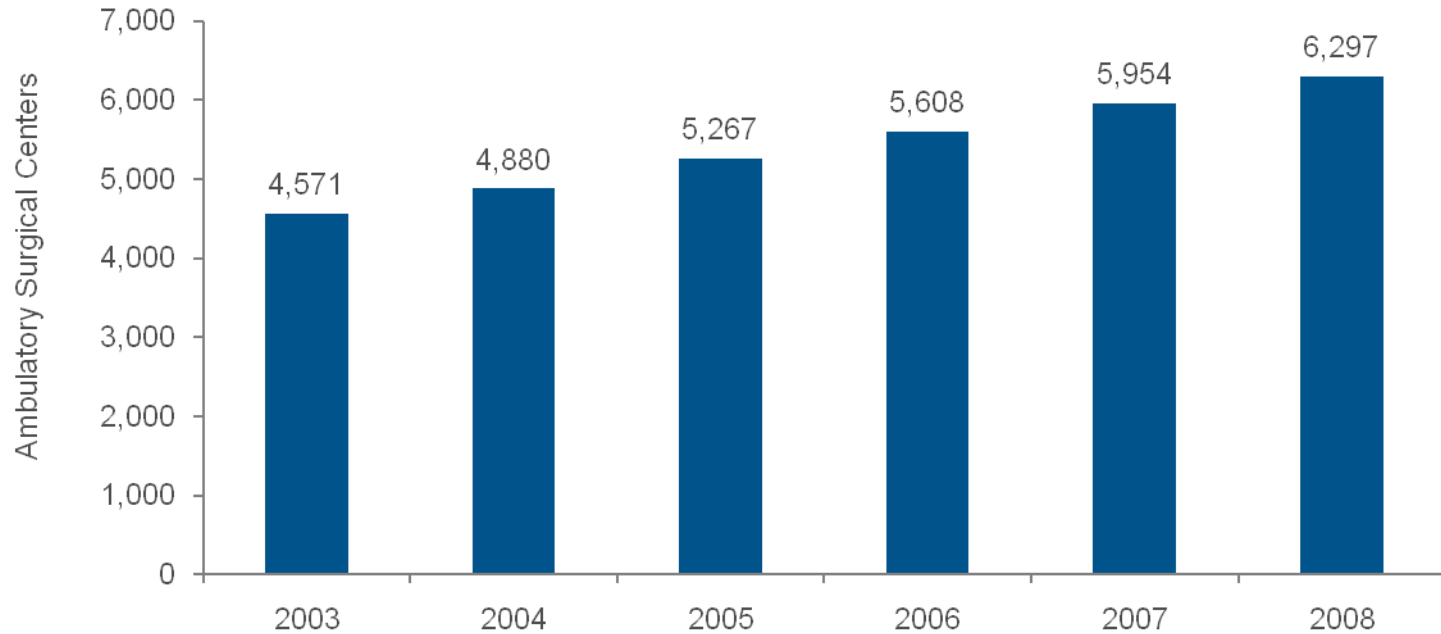
Chart 2.4: Number of Hospitals in Health Systems,⁽¹⁾ 2000 – 2008



Source: Avalere Health analysis of American Hospital Association Annual Survey data, 2008, for community hospitals.

⁽¹⁾ Hospitals that are part of a corporate body that may own and/or manage health provider facilities or health-related subsidiaries as well as non-health-related facilities including freestanding and/or subsidiary corporations.

Chart 2.5: Number of Medicare-approved Ambulatory Surgical Centers, 2003 – 2008⁽¹⁾

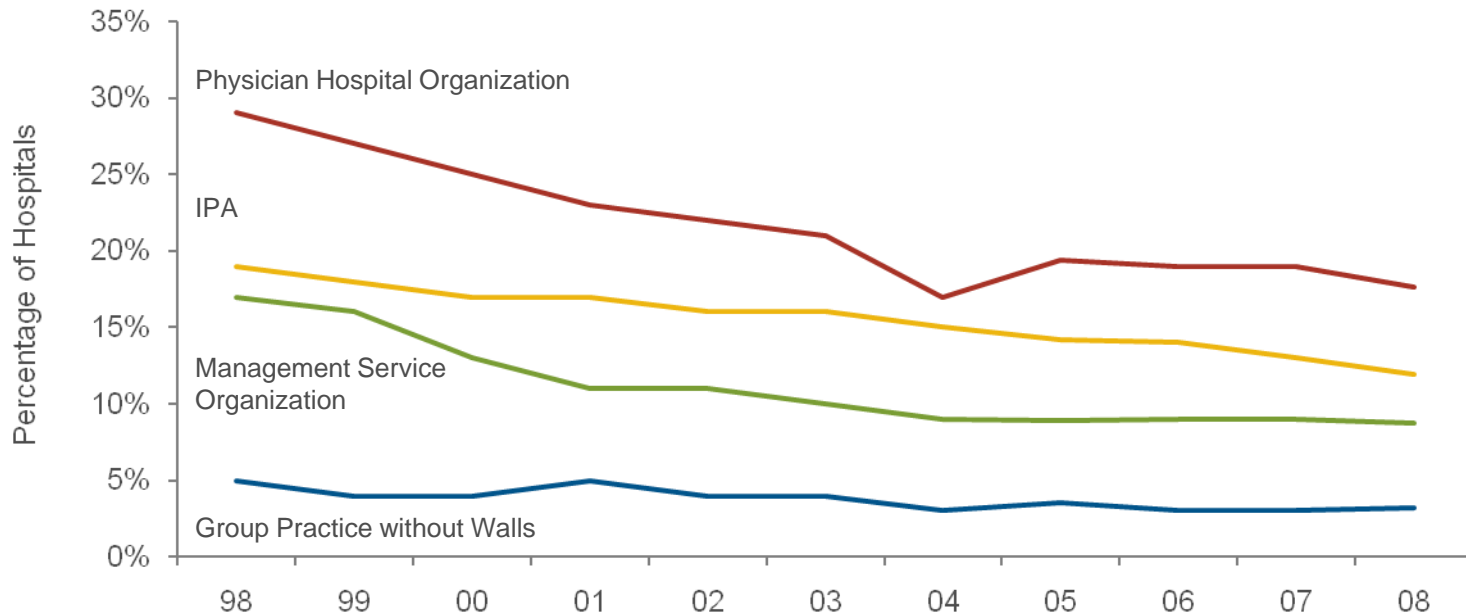


Source: Centers for Medicare & Medicaid Services. (2009). Provider of Service File.

Link: http://www.cms.hhs.gov/nonidentifiabledatafiles/04_providerofservicesfile.asp.

⁽¹⁾ Includes facilities that are approved but not eligible to participate in the Medicare program.

Chart 2.6: Percentage of Hospitals with Physician Affiliates⁽¹⁾ by Type of Relationship, 1998 – 2008

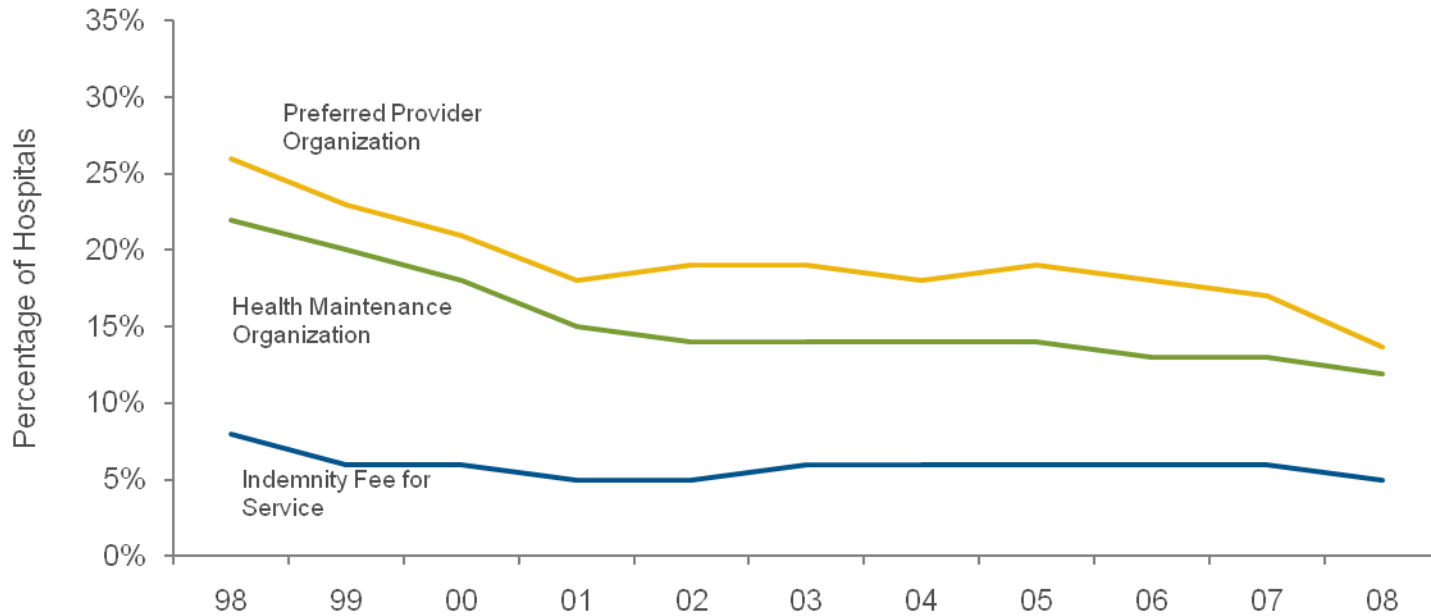


Source: Avalere Health analysis of American Hospital Association Annual Survey data, 2008, for community hospitals.

⁽¹⁾ A hospital is considered to have a physician relationship if the relationship exists as part of the hospital or a system or network of which the hospital is a part.

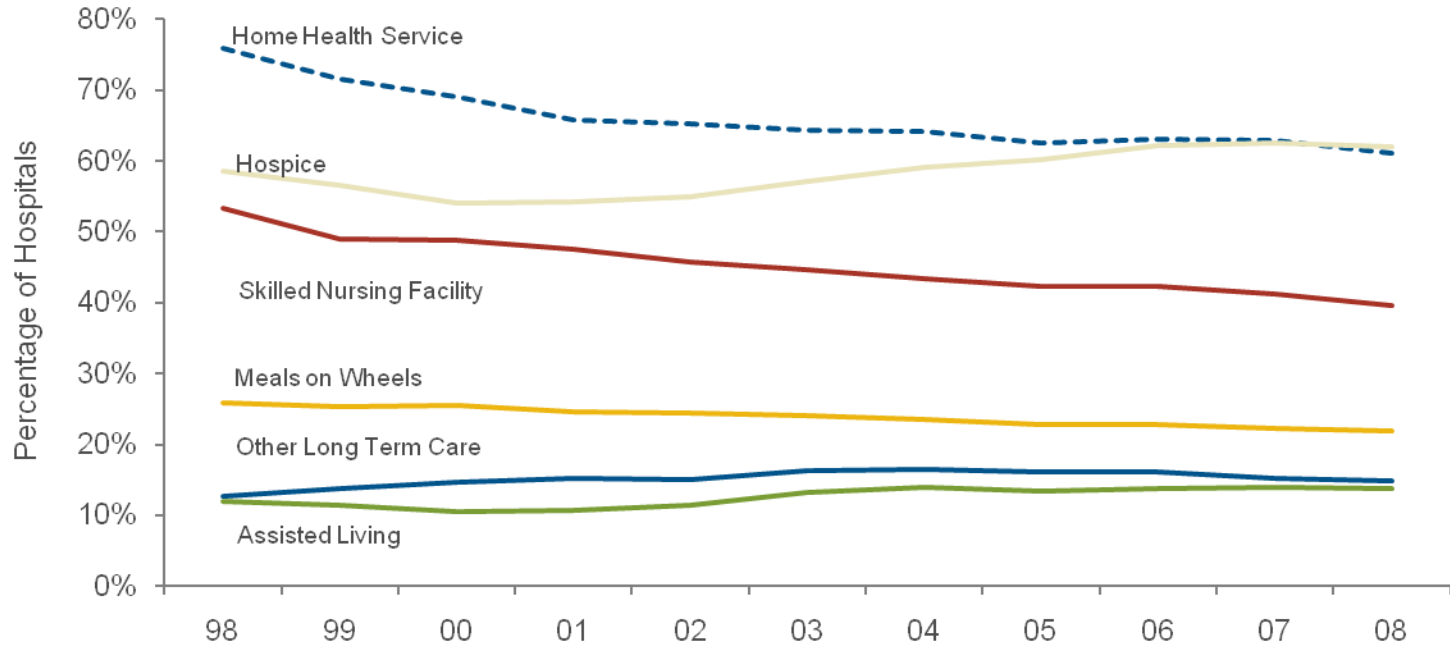
Previously Chart 2.7 in 2009 and earlier years' Chartbooks.

Chart 2.7: Percentage of Hospitals with Insurance Products by Type of Insurance, 1998 – 2008



Source: Avalere Health analysis of American Hospital Association Annual Survey data, 2008, for community hospitals. Previously Chart 2.8 in 2009 and earlier years' Chartbooks.

Chart 2.8: Percentage of Hospitals Offering “Non-hospital” Services,⁽¹⁾ 1998 – 2008

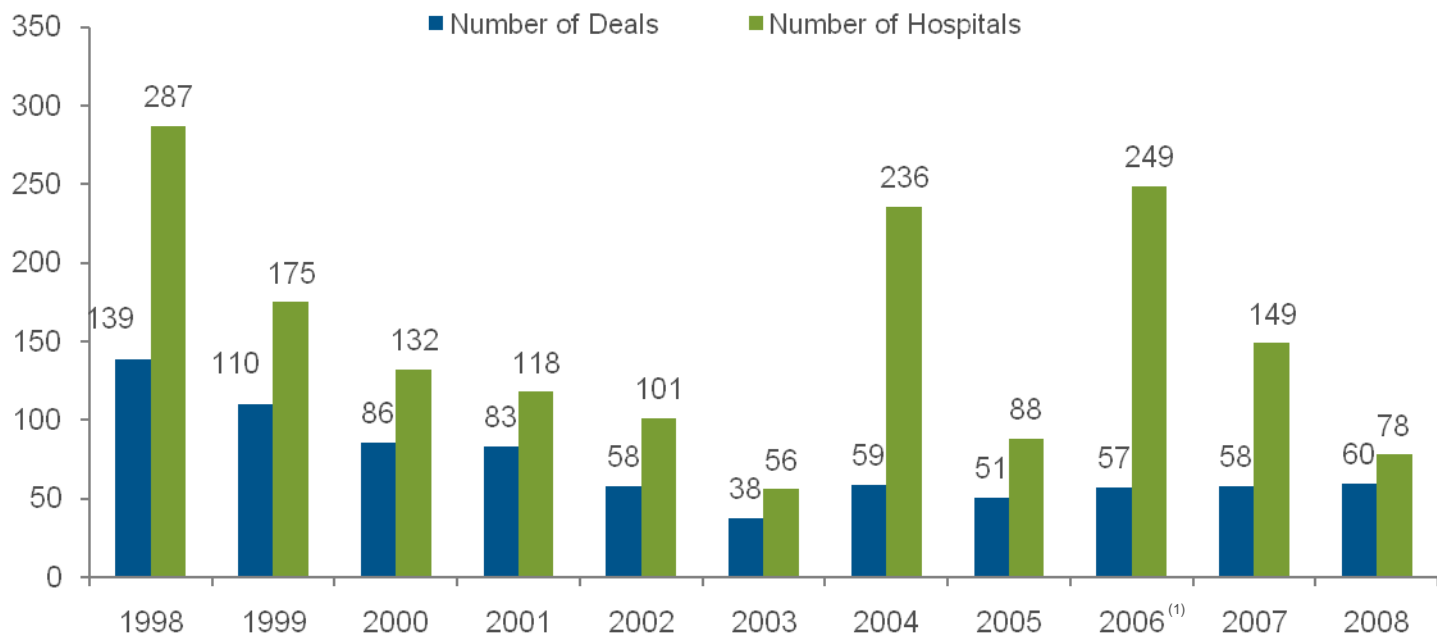


Source: Avalere Health analysis of American Hospital Association Annual Survey data, 2008, for community hospitals.

⁽¹⁾ Includes services offered in hospital, health system, network or joint venture.

Previously Chart 2.9 in 2009 and earlier years' Chartbooks.

Chart 2.9: Announced Hospital Mergers and Acquisitions, 1998 – 2008



Source: Irving Levin Associates, Inc., *The Health Care Acquisition Report*, Fifteenth Edition, 2009.
Previously Chart 2.10 in 2009 and earlier years' Chartbooks.

⁽¹⁾ In 2006, the privatization of HCA, Inc. affected 176 acute-care hospitals. The acquisition was the largest health care transaction ever announced.