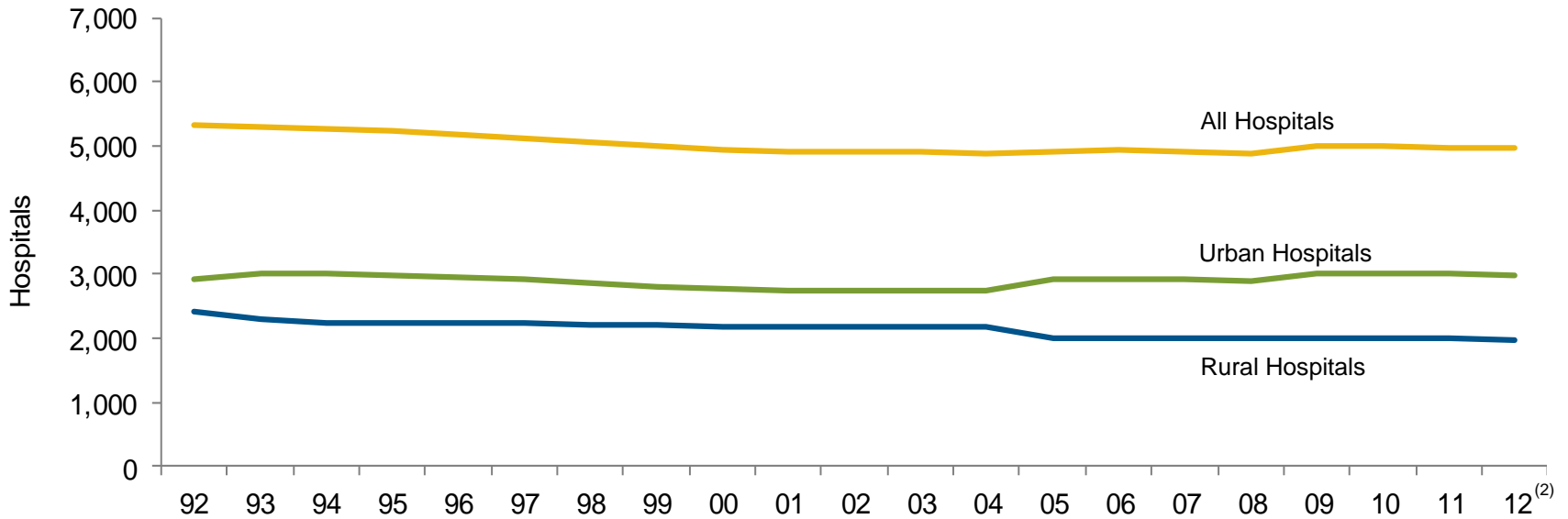




# CHAPTER 2

Organizational Trends

### Chart 2.1: Number of Community Hospitals,<sup>(1)</sup> 1992 – 2012

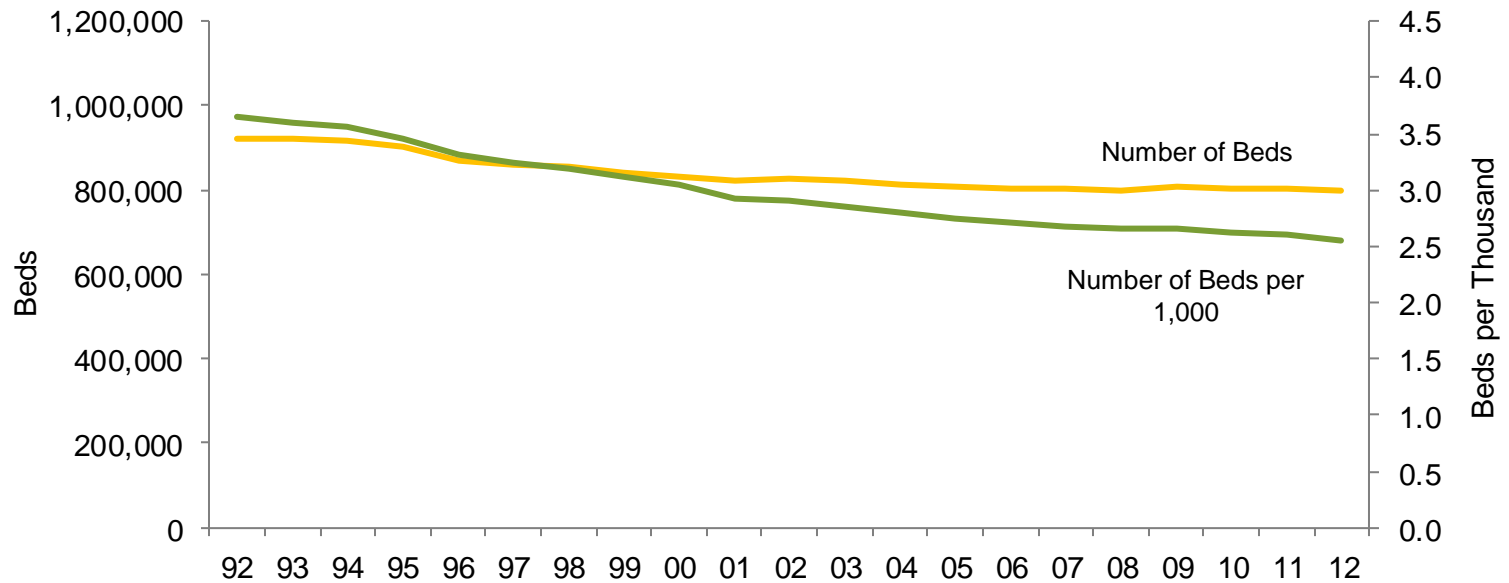


Source: Avalere Health analysis of American Hospital Association Annual Survey data, 2012, for community hospitals.

<sup>(1)</sup> All nonfederal, short-term general and specialty hospitals whose facilities and services are available to the public.

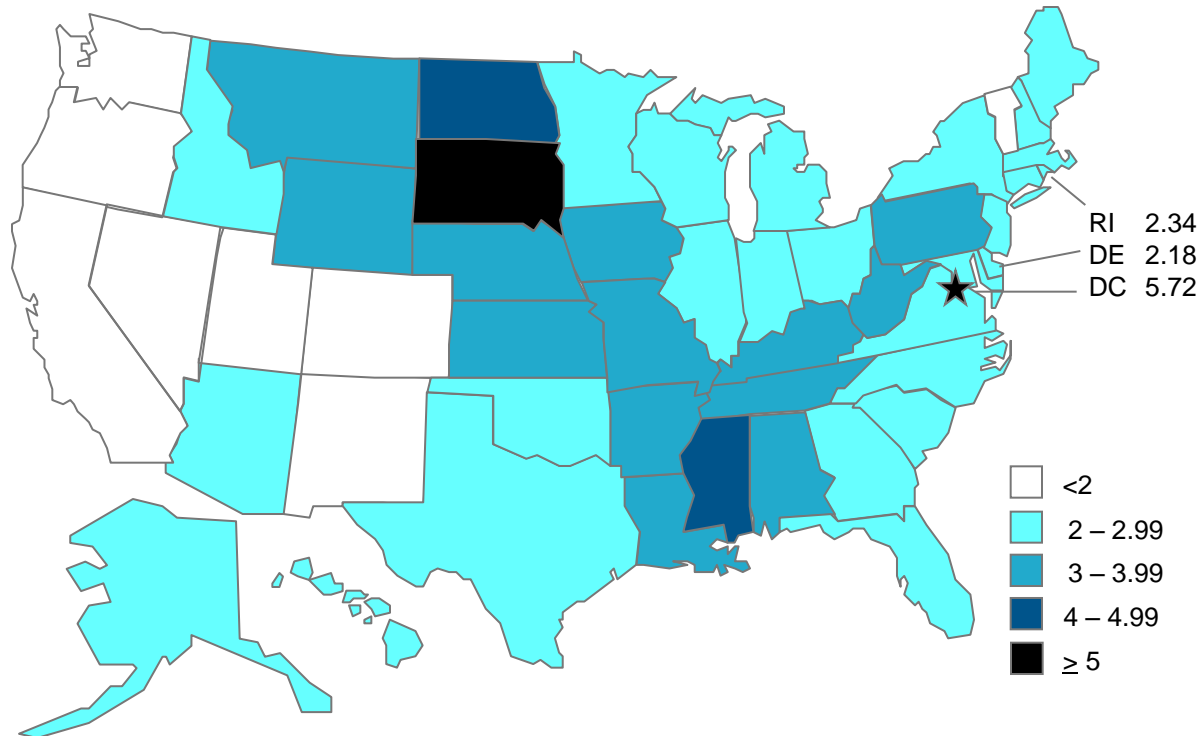
<sup>(2)</sup> Data on the number of urban and rural hospitals in 2004 and beyond were collected using coding different from previous years to reflect new Centers for Medicare & Medicaid Services wage area designations.

### Chart 2.2: Number of Beds and Number of Beds per 1,000 Persons, 1992 – 2012



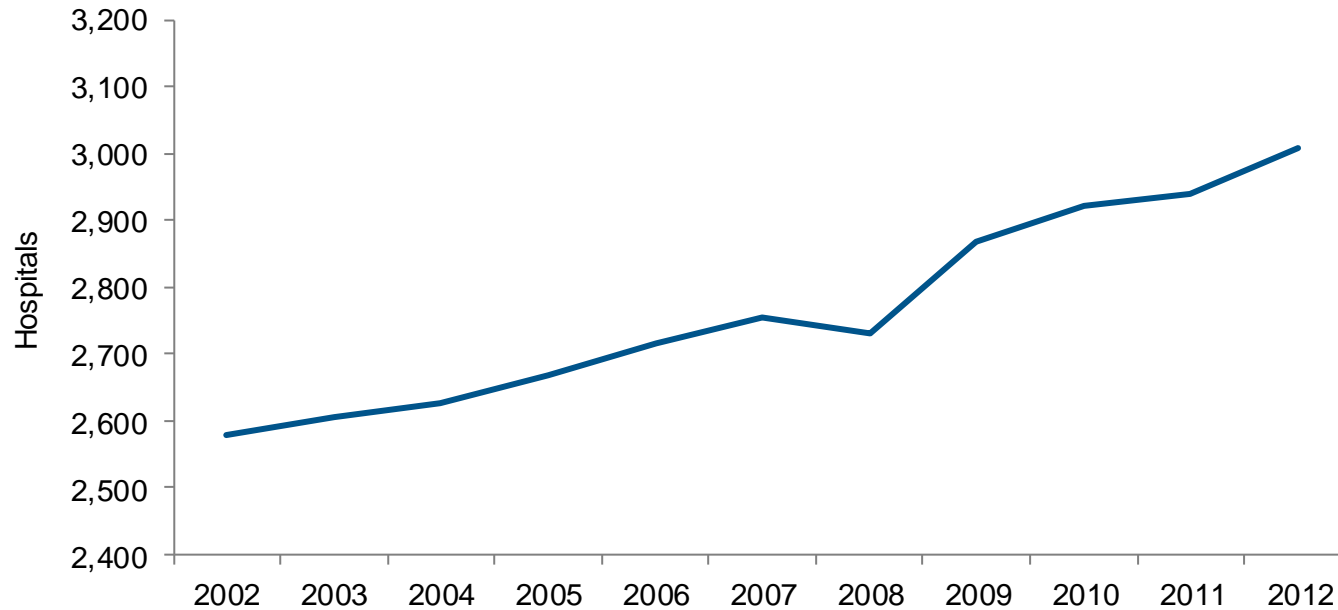
Source: Avalere Health analysis of American Hospital Association Annual Survey data, 2012, for community hospitals.

### Chart 2.3: Beds per 1,000 Persons by State, 2012



Source: Avalere Health analysis of American Hospital Association Annual Survey data, 2012, for community hospitals. US Census Bureau: National and State Population Estimates, July 1, 2012.  
Link: <http://www.census.gov/popest/data/state/totals/2012/index.html>.

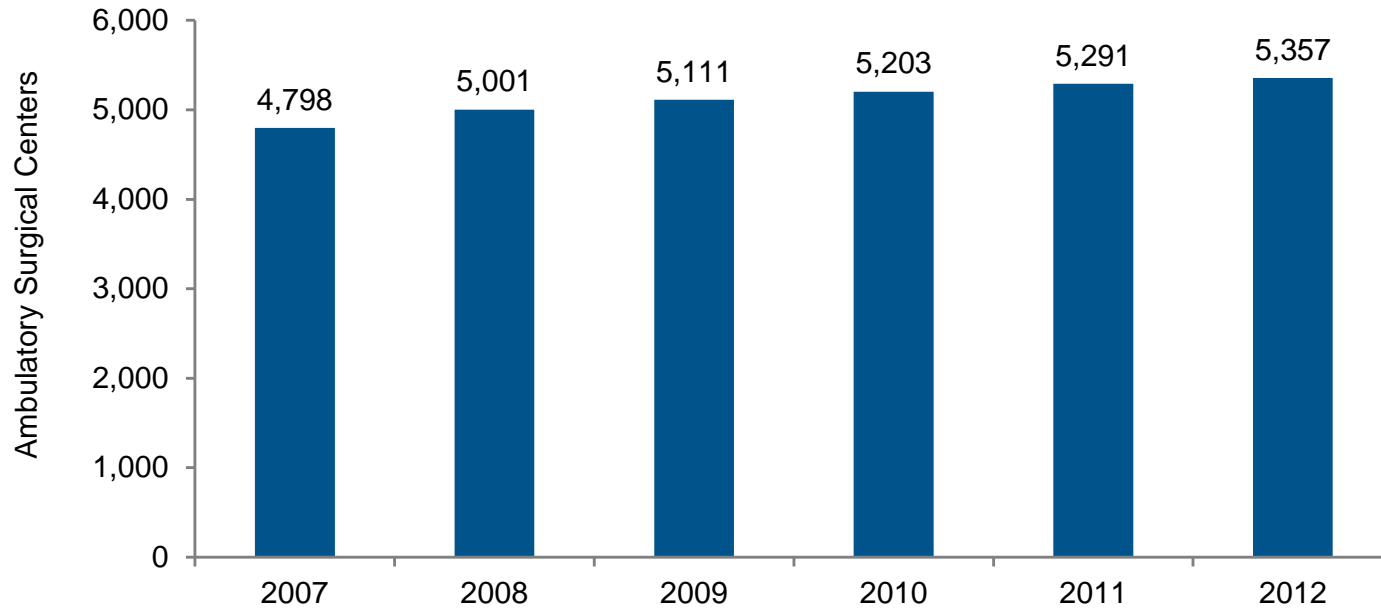
Chart 2.4: Number of Hospitals in Health Systems,<sup>(1)</sup> 2002 – 2012



Source: Avalere Health analysis of American Hospital Association Annual Survey data, 2012, for community hospitals.

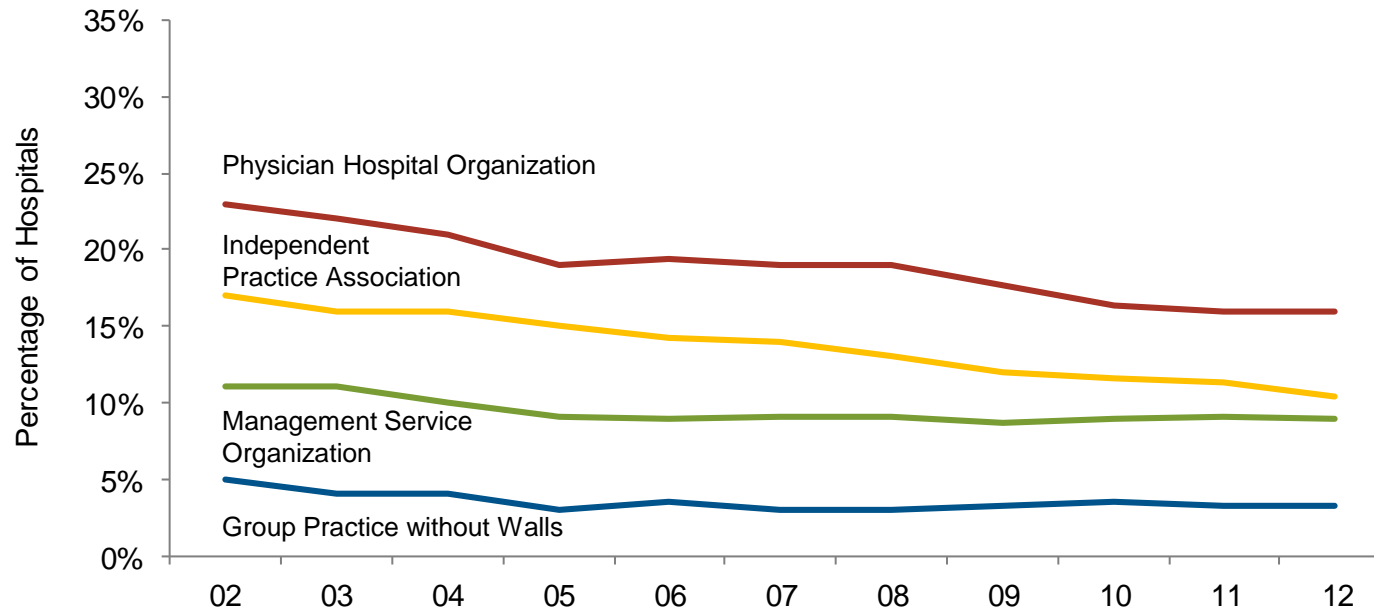
<sup>(1)</sup> Hospitals that are part of a corporate body that may own and/or manage health provider facilities or health-related subsidiaries, as well as non-health-related facilities including freestanding and/or subsidiary corporations.

### Chart 2.5: Number of Medicare-certified Ambulatory Surgical Centers, 2007 – 2012



Source: Medicare Payment Advisory Commission. (March 2014). *Report to Congress: Medicare Payment Policy*.  
Link: [http://medpac.gov/documents/Mar14\\_EntireReport.pdf](http://medpac.gov/documents/Mar14_EntireReport.pdf).

### Chart 2.6: Percentage of Hospitals with Physician Affiliates<sup>(1)</sup> by Type of Relationship, 2002 – 2012

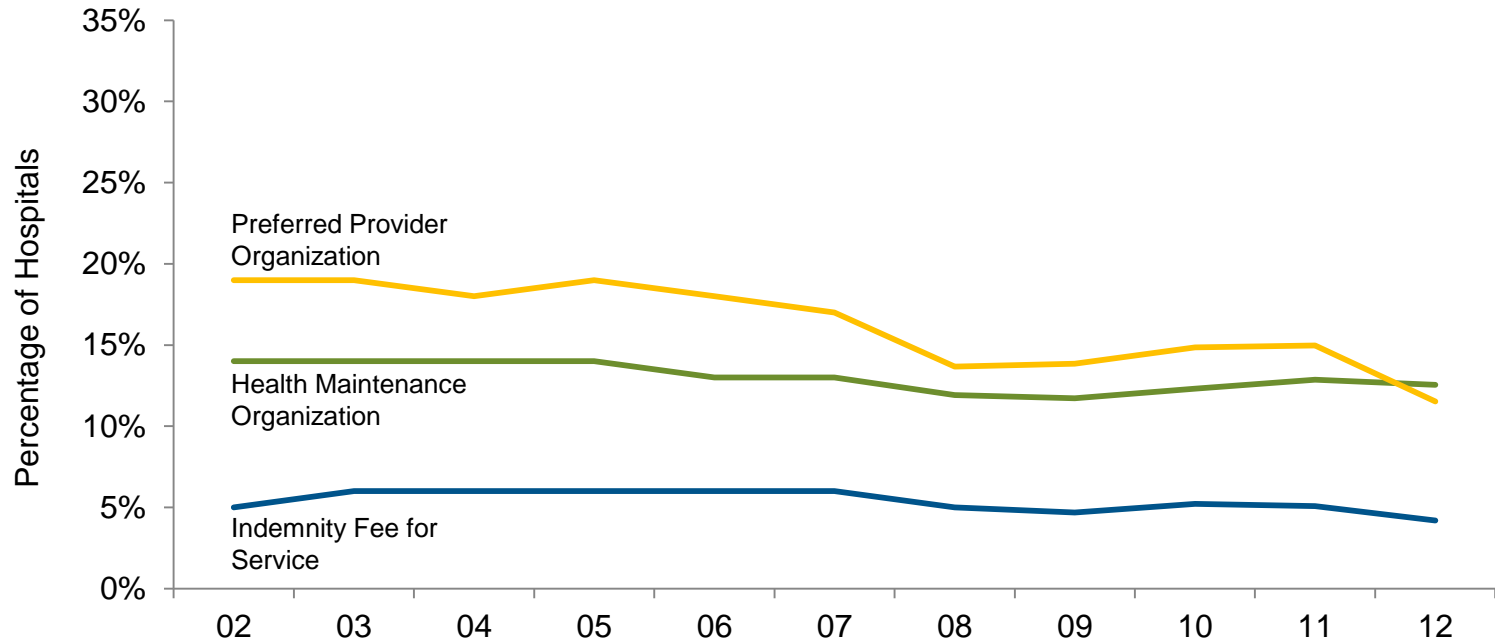


Source: Avalere Health analysis of American Hospital Association Annual Survey data, 2012, for community hospitals.

<sup>(1)</sup> A hospital is considered to have a physician relationship if the relationship exists as part of the hospital or a system or network of which the hospital is a part.

Previously Chart 2.7 in 2009 and earlier years' Chartbooks.

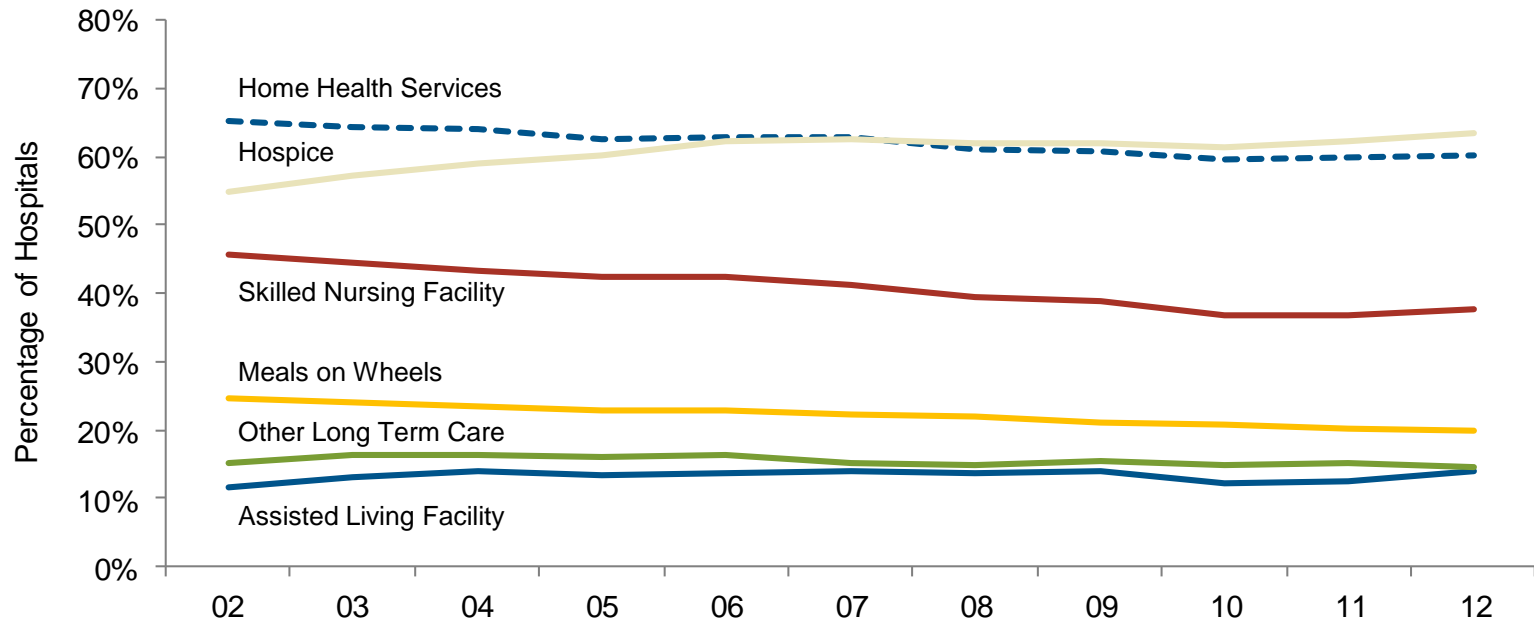
### Chart 2.7: Percentage of Hospitals with Insurance Products by Type of Insurance, 2002 – 2012



Source: Avalere Health analysis of American Hospital Association Annual Survey data, 2012, for community hospitals. Previously Chart 2.8 in 2009 and earlier years' Chartbooks.



### Chart 2.8: Percentage of Hospitals Offering “Non-hospital” Services,<sup>(1)</sup> 2002 – 2012

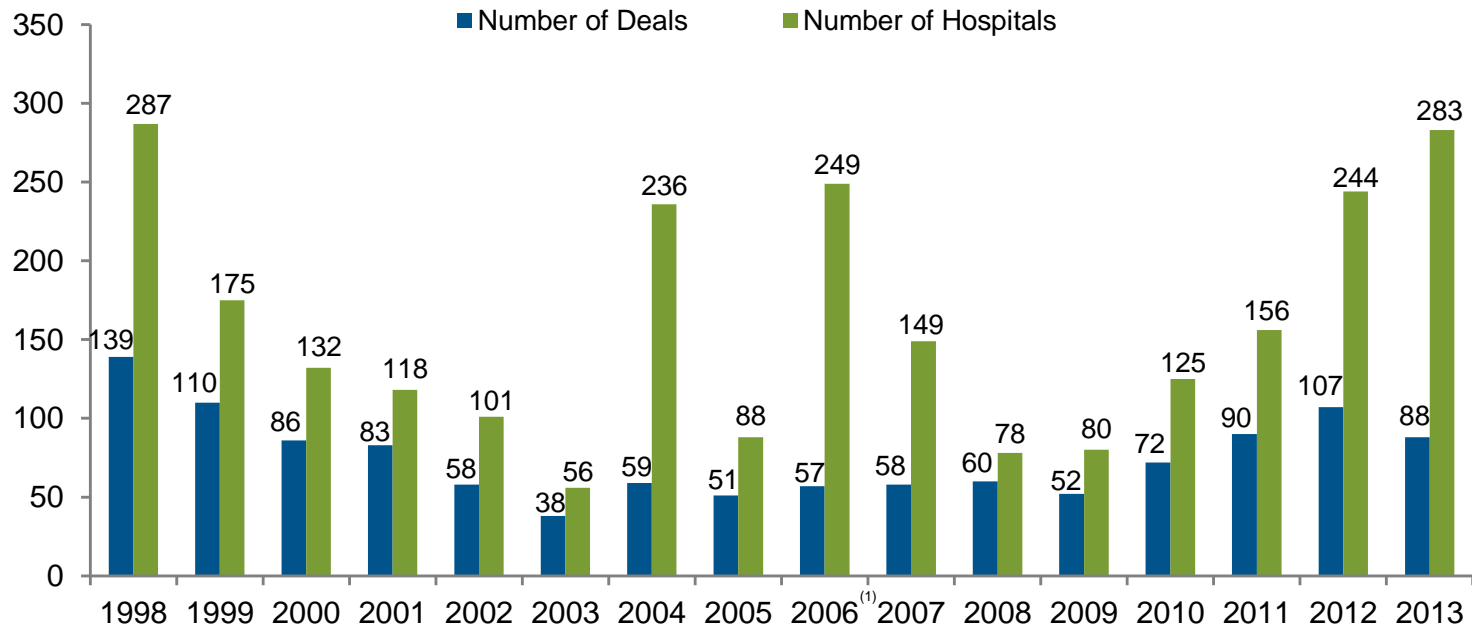


Source: Avalere Health analysis of American Hospital Association Annual Survey data, 2012, for community hospitals.

<sup>(1)</sup> Includes services offered in hospital, health system, network or joint venture.

Previously Chart 2.9 in 2009 and earlier years' Chartbooks.

### Chart 2.9: Announced Hospital Mergers and Acquisitions, 1998 – 2013



Source: Irving Levin Associates, Inc., *The Health Care Acquisition Report*, Twentieth Edition, 2014.

<sup>(1)</sup> In 2006, the privatization of HCA, Inc. affected 176 acute-care hospitals. The acquisition was the largest health care transaction ever announced.