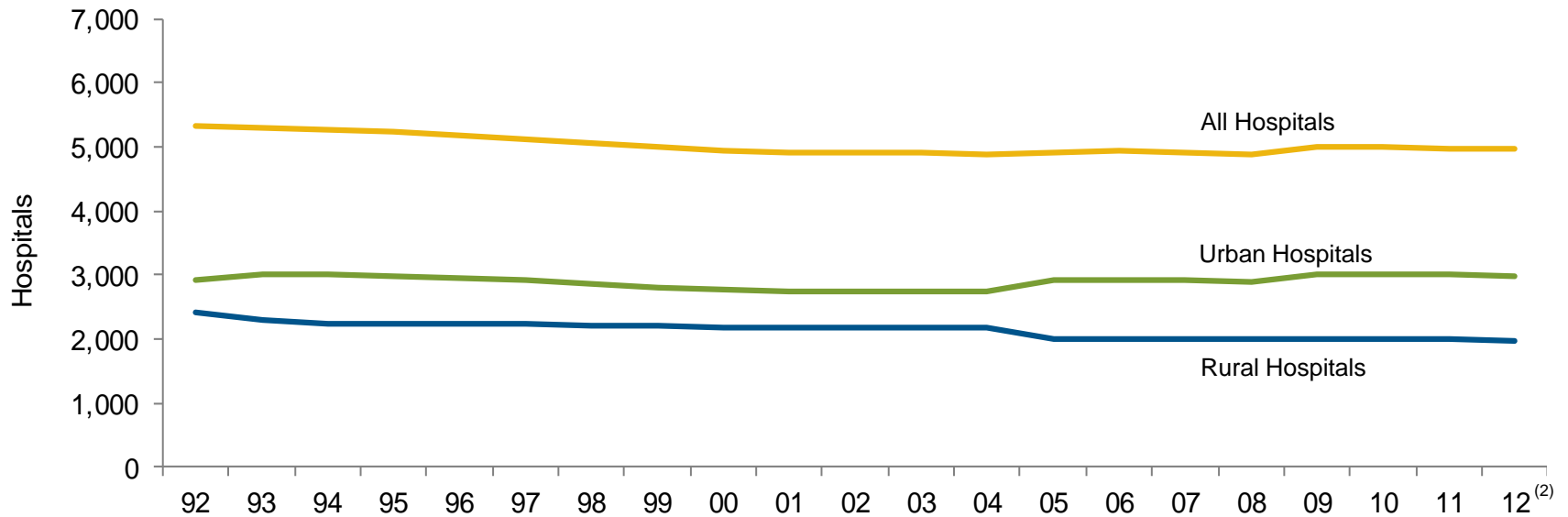


Chart 2.1: Number of Community Hospitals,⁽¹⁾ 1992 – 2012



Source: Avalere Health analysis of American Hospital Association Annual Survey data, 2012, for community hospitals.

⁽¹⁾ All nonfederal, short-term general and specialty hospitals whose facilities and services are available to the public.

⁽²⁾ Data on the number of urban and rural hospitals in 2004 and beyond were collected using coding different from previous years to reflect new Centers for Medicare & Medicaid Services wage area designations.