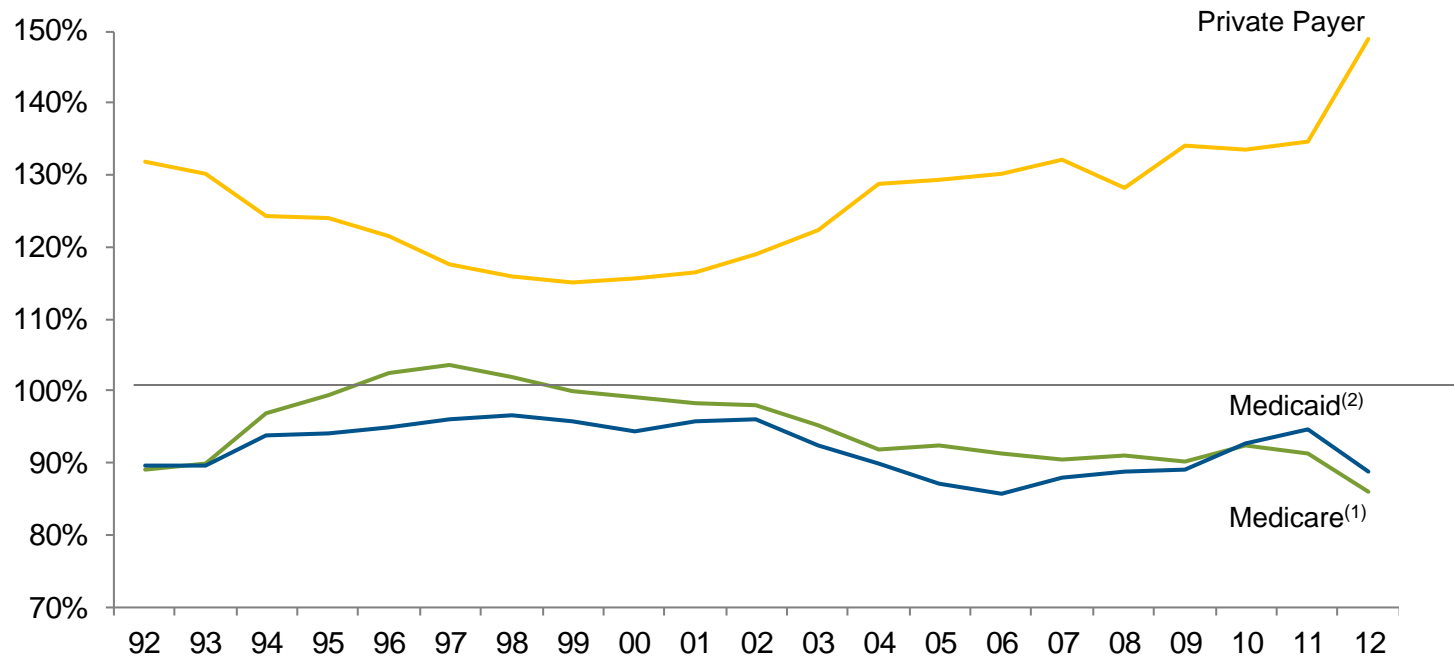


Chart 4.6: Aggregate Hospital Payment-to-cost Ratios for Private Payers, Medicare and Medicaid, 1992 – 2012



Source: Avalere Health analysis of American Hospital Association Annual Survey data, 2012, for community hospitals.

(1) Includes Medicare Disproportionate Share payments.

(2) Includes Medicaid Disproportionate Share payments.