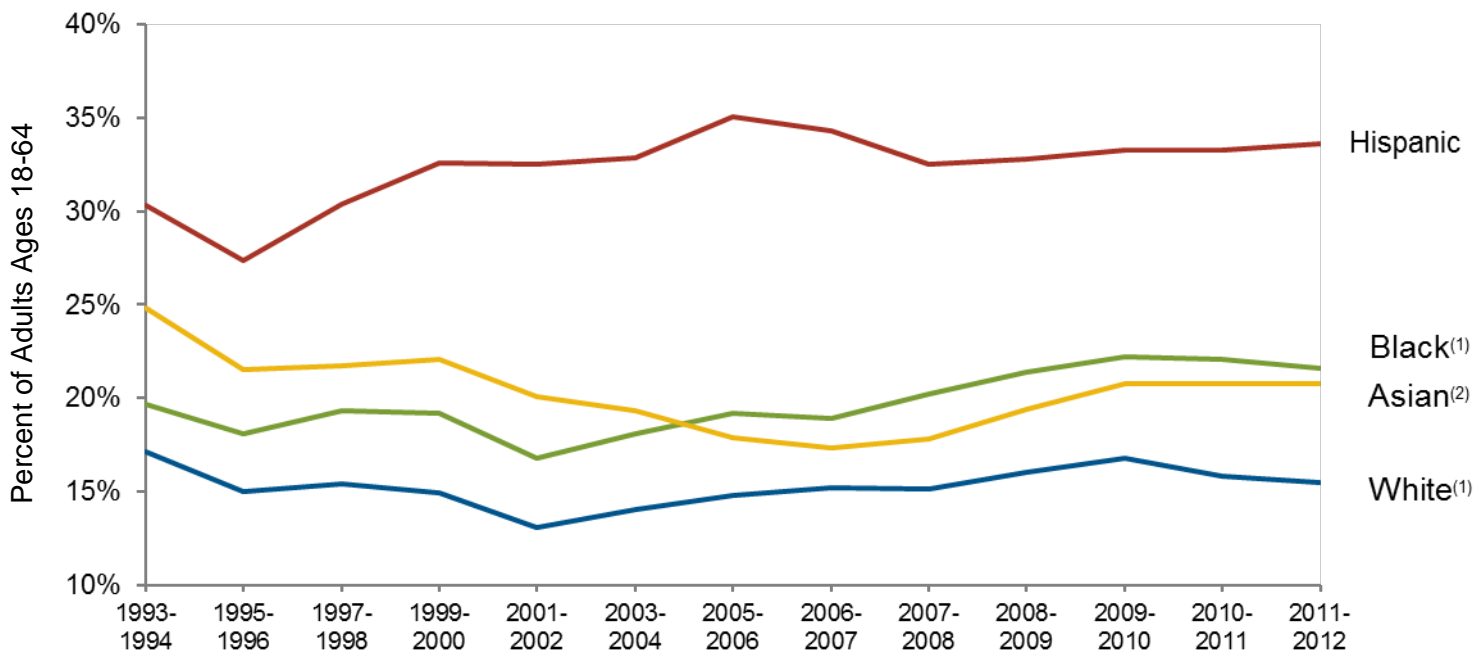


Chart 7.14: Percent of Adults with No Usual Source of Care by Race, 1993 – 2012



Source: National Center for Health Statistics. (2014). *Health, United States, 2013*. Hyattsville, MD.

⁽¹⁾ Includes individuals of Hispanic and non-Hispanic origin.

⁽²⁾ Includes individuals of non-Hispanic origin only.