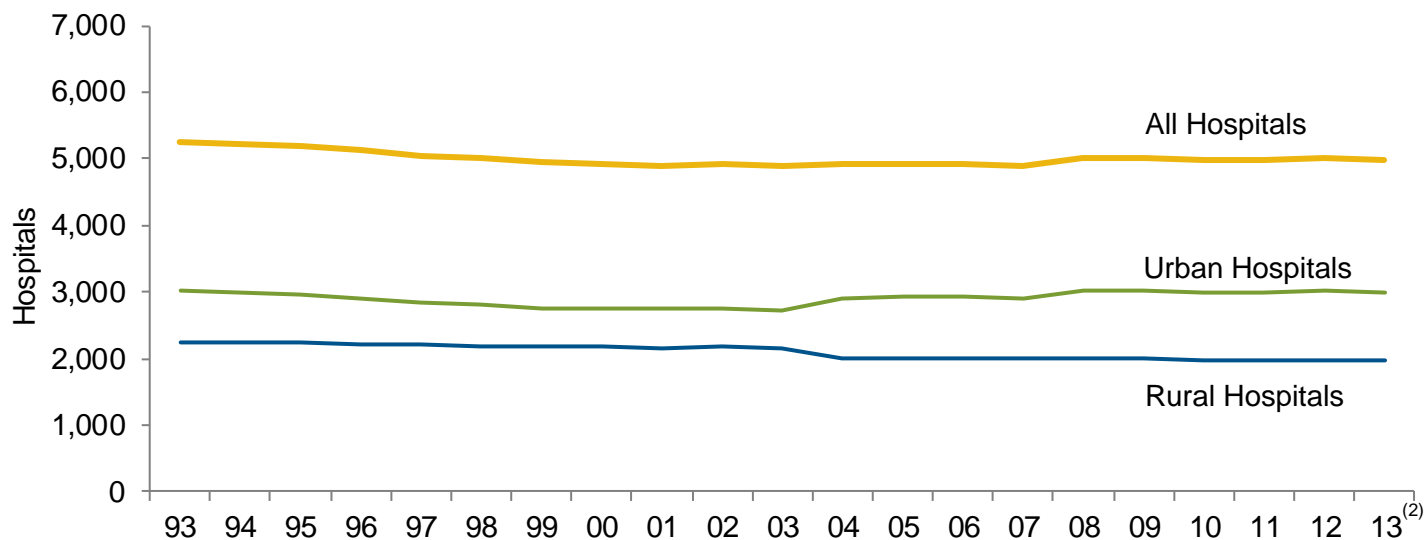


CHAPTER 2

Organizational Trends

Chart 2.1: Number of Community Hospitals,⁽¹⁾ 1993 – 2013

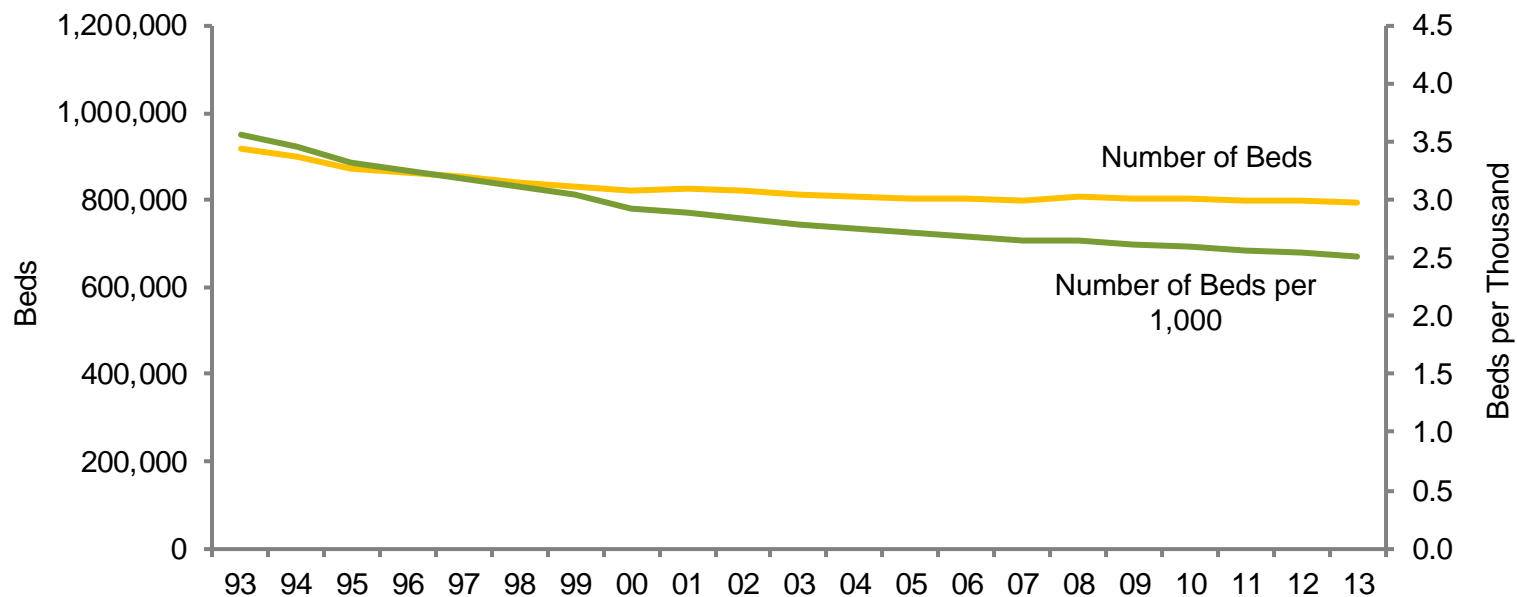


Source: Avalere Health analysis of American Hospital Association Annual Survey data, 2013, for community hospitals.

⁽¹⁾ All non-federal, short-term general and specialty hospitals whose facilities and services are available to the public.

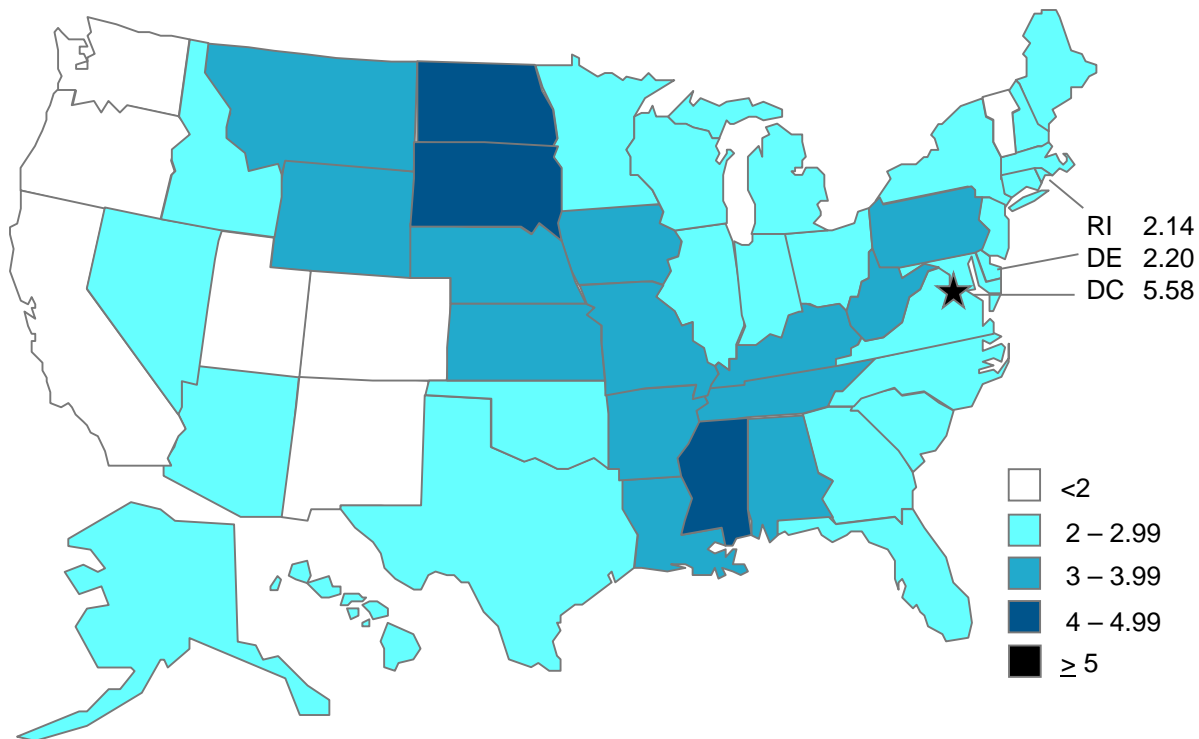
⁽²⁾ Data on the number of urban and rural hospitals in 2004 and beyond were collected using coding different from previous years to reflect new Centers for Medicare & Medicaid Services wage area designations.

Chart 2.2: Number of Beds and Number of Beds per 1,000 Persons, 1993 – 2013

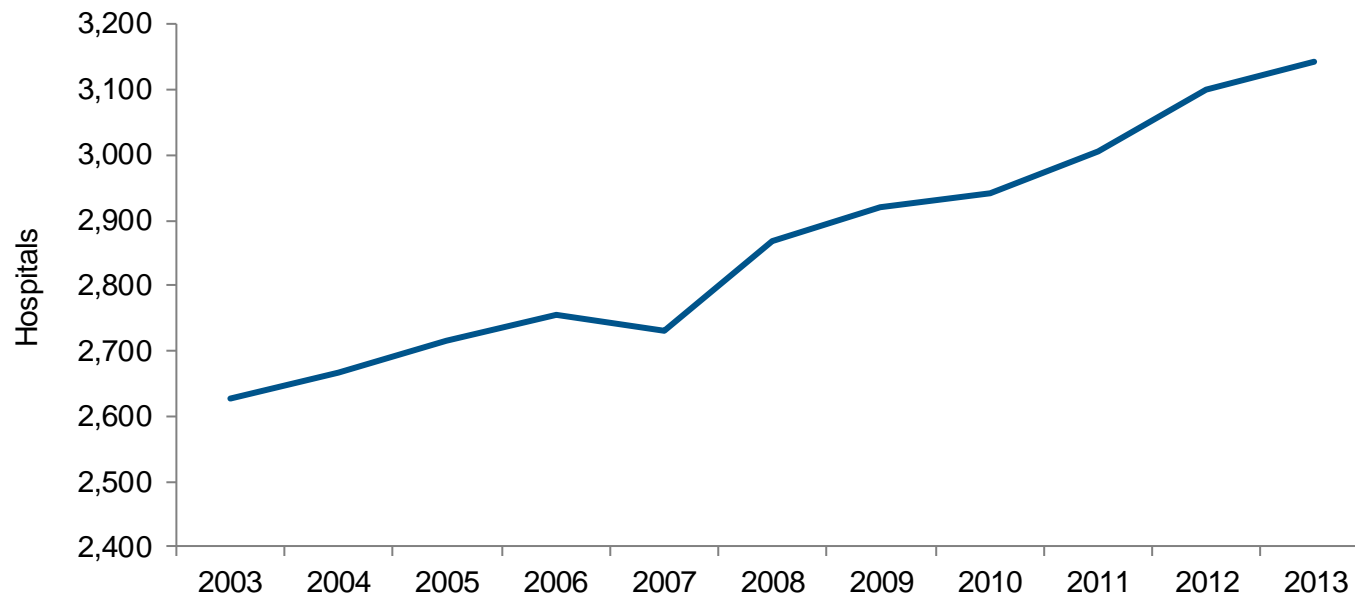


Source: Avalere Health analysis of American Hospital Association Annual Survey data, 2013, for community hospitals.

Chart 2.3: Beds per 1,000 Persons by State, 2013



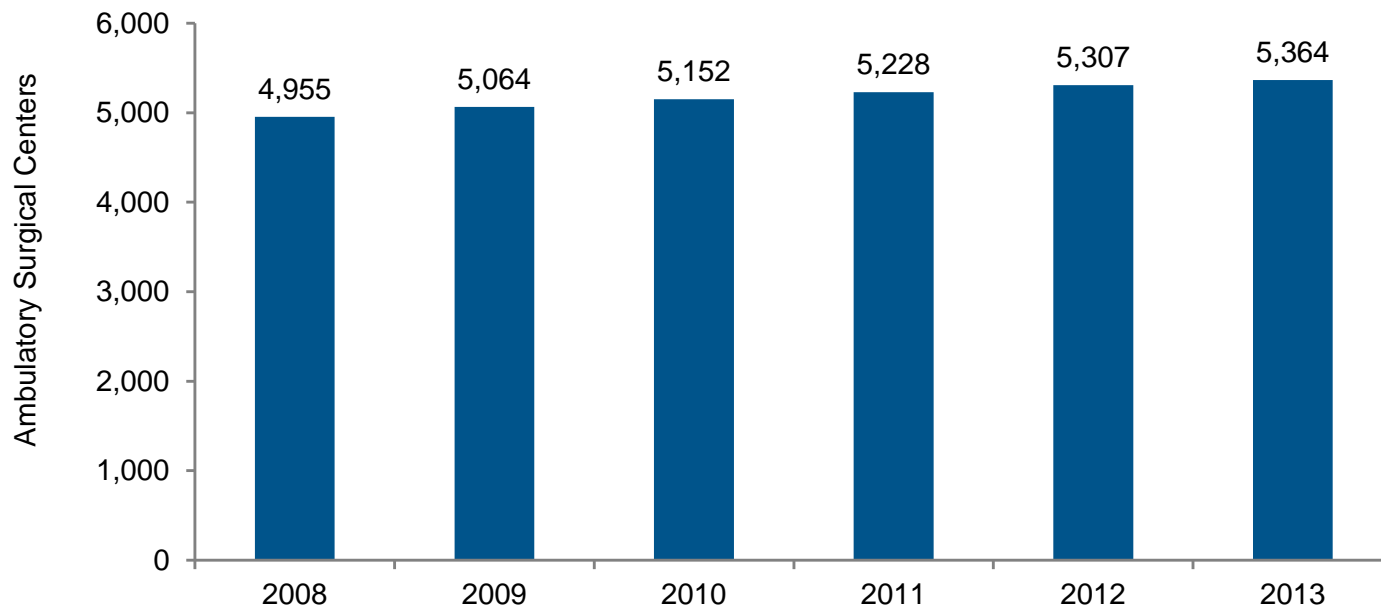
Source: Avalere Health analysis of American Hospital Association Annual Survey data, 2013, for community hospitals. US Census Bureau: National and State Population Estimates, July 1, 2013.
 Link: <http://www.census.gov/popest/data/state/totals/2013/index.html>.

Chart 2.4: Number of Hospitals in Health Systems,⁽¹⁾ 2003 – 2013

Source: Avalere Health analysis of American Hospital Association Annual Survey data, 2013, for community hospitals.

⁽¹⁾ Hospitals that are part of a corporate body that may own and/or manage health provider facilities or health-related subsidiaries as well as non-health-related facilities including freestanding and/or subsidiary corporations.

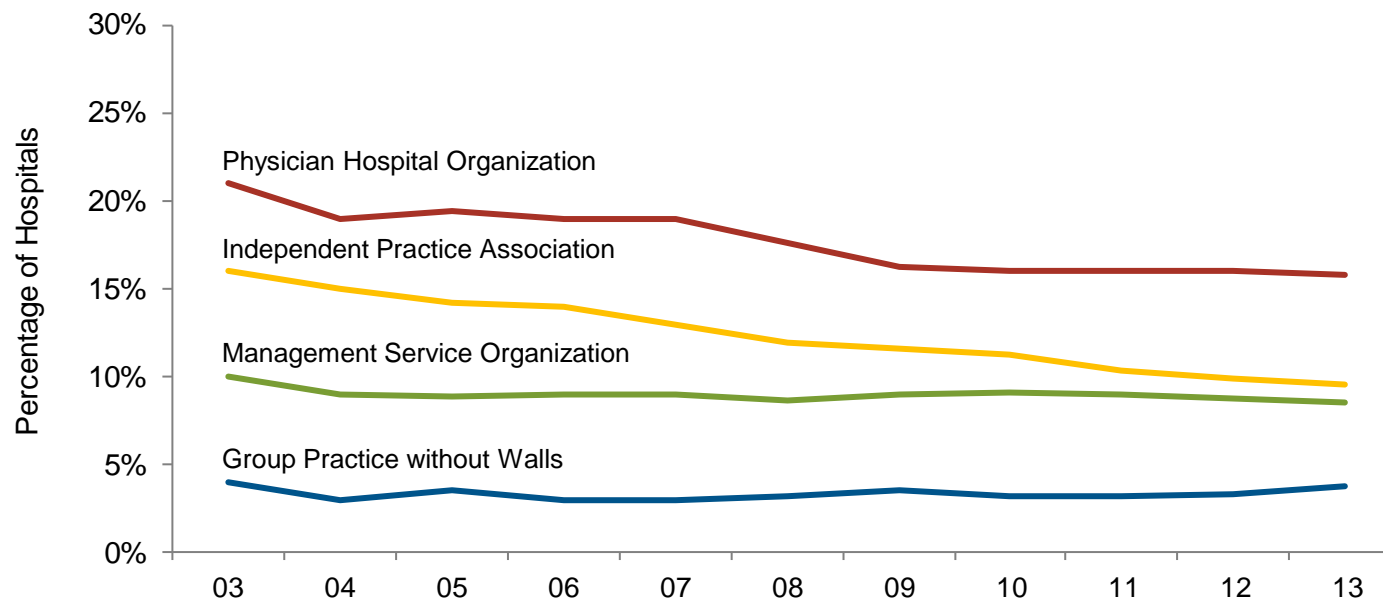
Chart 2.5: Number of Medicare-certified Ambulatory Surgical Centers, 2008 – 2013



Source: Medicare Payment Advisory Commission. (March 2015). *Report to Congress: Medicare Payment Policy*.

Link: http://www.medpac.gov/documents/reports/Mar15_EntireReport.pdf.

Chart 2.6: Percentage of Hospitals with Physician Affiliates⁽¹⁾ by Type of Relationship, 2003 – 2013

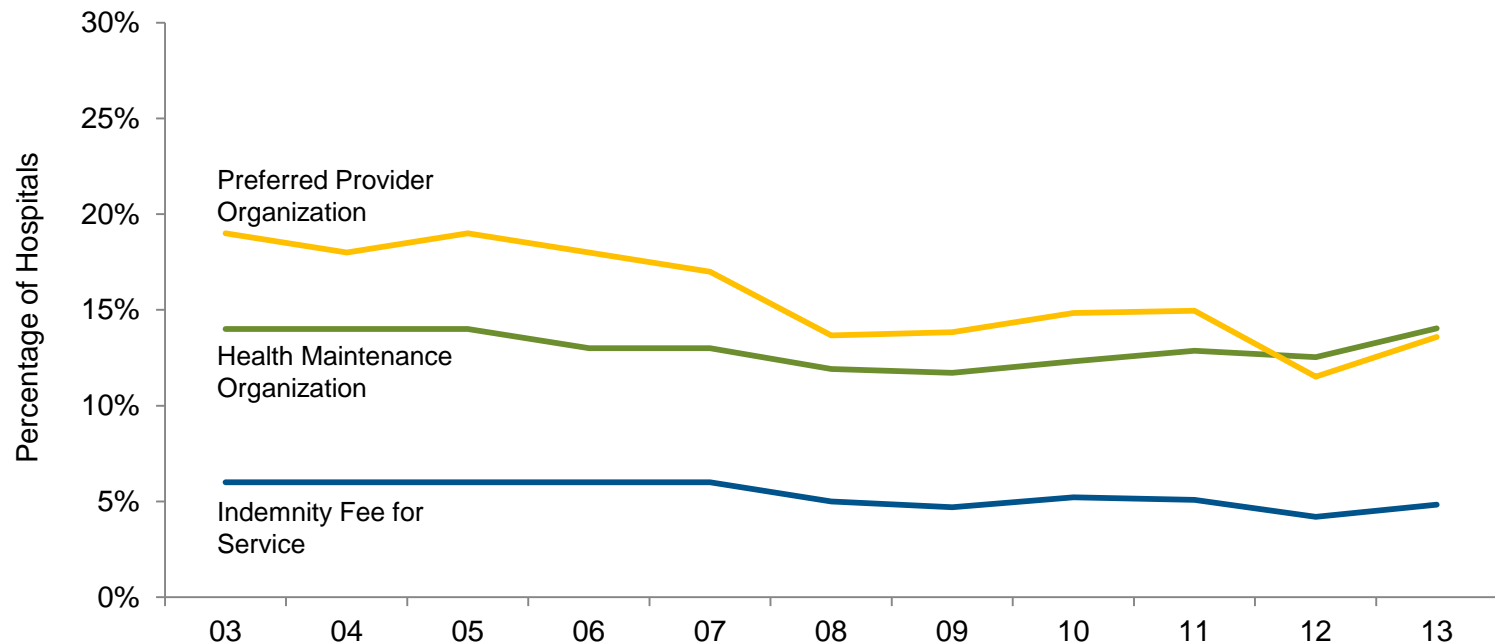


Source: Avalere Health analysis of American Hospital Association Annual Survey data, 2013, for community hospitals.

⁽¹⁾ A hospital is considered to have a physician relationship if the relationship exists as part of the hospital or a system or network of which the hospital is a part.

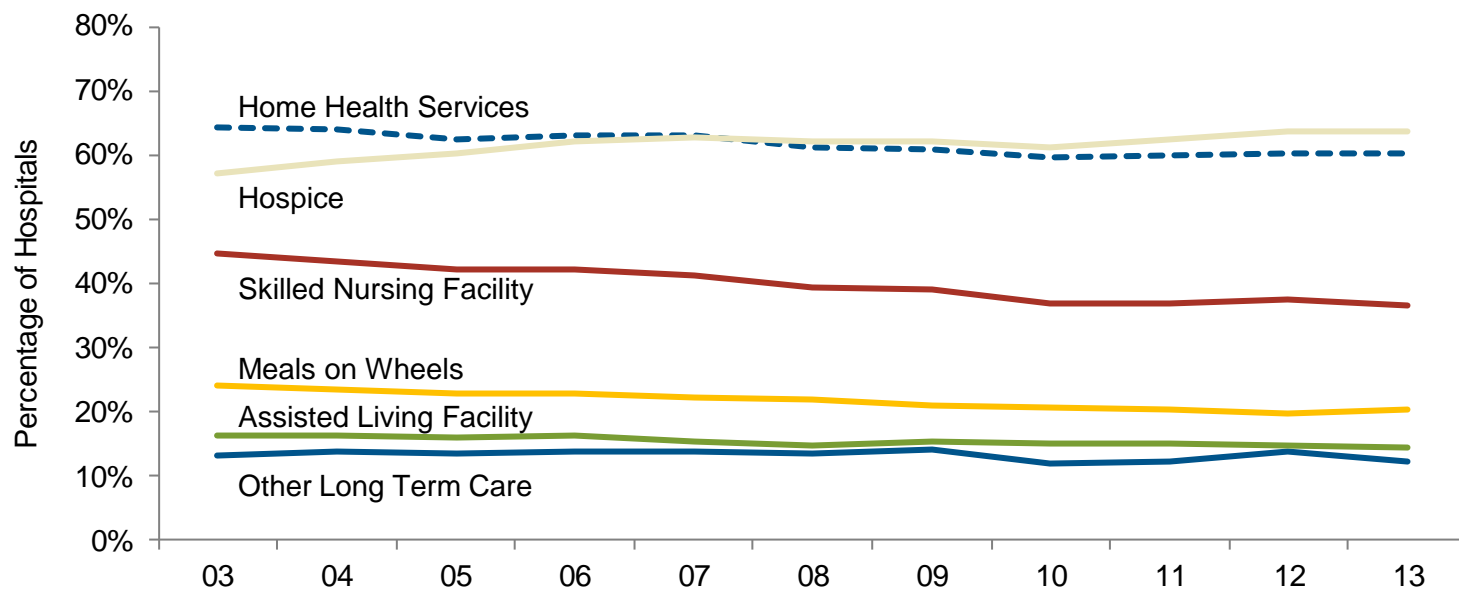
Previously Chart 2.7 in 2009 and earlier years' Chartbooks.

Chart 2.7: Percentage of Hospitals with Insurance Products by Type of Insurance, 2003 – 2013



Source: Avalere Health analysis of American Hospital Association Annual Survey data, 2013, for community hospitals. Previously Chart 2.8 in 2009 and earlier years' Chartbooks.

Chart 2.8: Percentage of Hospitals Offering “Non-hospital” Services,⁽¹⁾ 2003 – 2013

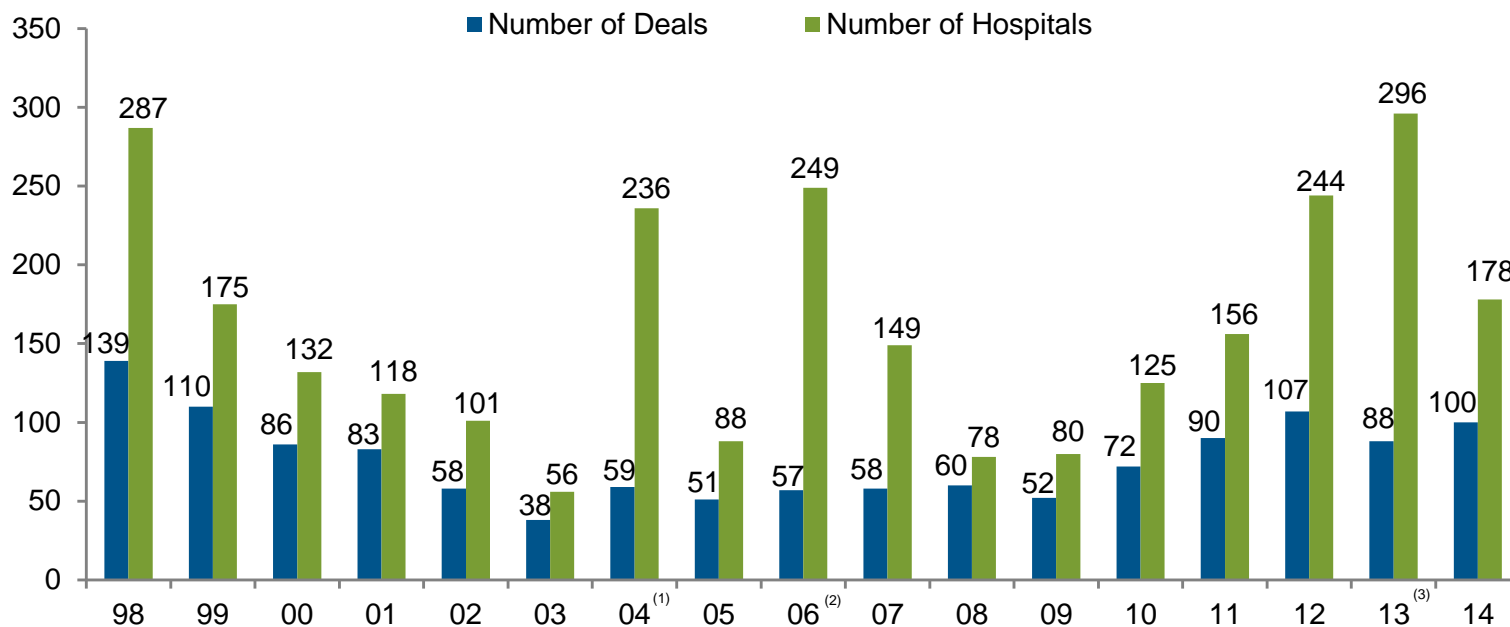


Source: Avalere Health analysis of American Hospital Association Annual Survey data, 2013, for community hospitals.

⁽¹⁾ Includes services offered in hospital, health system, network or joint venture.

Previously Chart 2.9 in 2009 and earlier years' Chartbooks.

Chart 2.9: Announced Hospital Mergers and Acquisitions, 1998 – 2014



Source: Irving Levin Associates, Inc. (2014). *The Health Care Services Acquisition Report*, Twenty-First Edition.

- (1) In 2004, the privatization of Select Medical Corp., an operator of long-term and acute-care hospitals, and divestiture of hospitals by Tenet Healthcare Corporation helped to increase the number of hospitals affected.
- (2) In 2006, the privatization of Hospital Corporation of America, Inc. affected 176 acute-care hospitals. The acquisition was the largest health care transaction ever announced.
- (3) In 2013, consolidation of several investor-owned systems resulted in a large number of hospitals involved in acquisition activity.