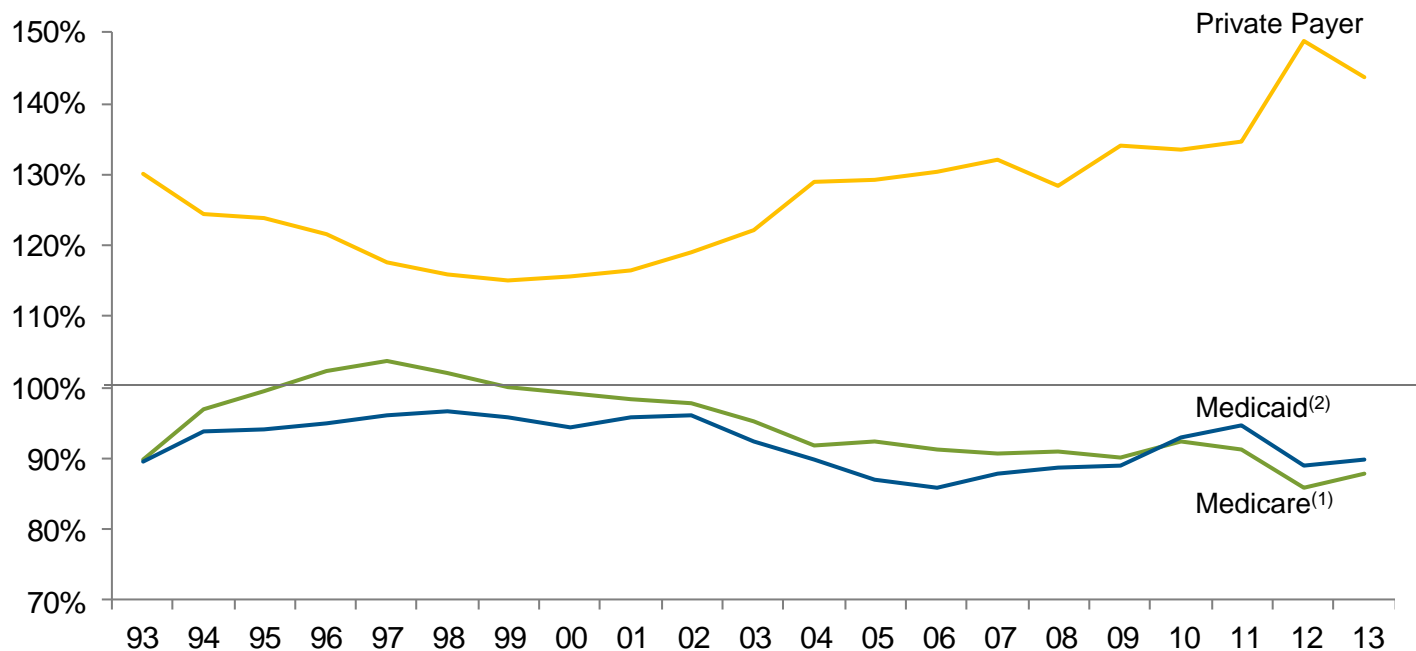


Chart 4.6: Aggregate Hospital Payment-to-cost Ratios for Private Payers, Medicare and Medicaid, 1993 – 2013



Source: Avalere Health analysis of American Hospital Association Annual Survey data, 2013, for community hospitals.

(1) Includes Medicare Disproportionate Share payments.

(2) Includes Medicaid Disproportionate Share payments.