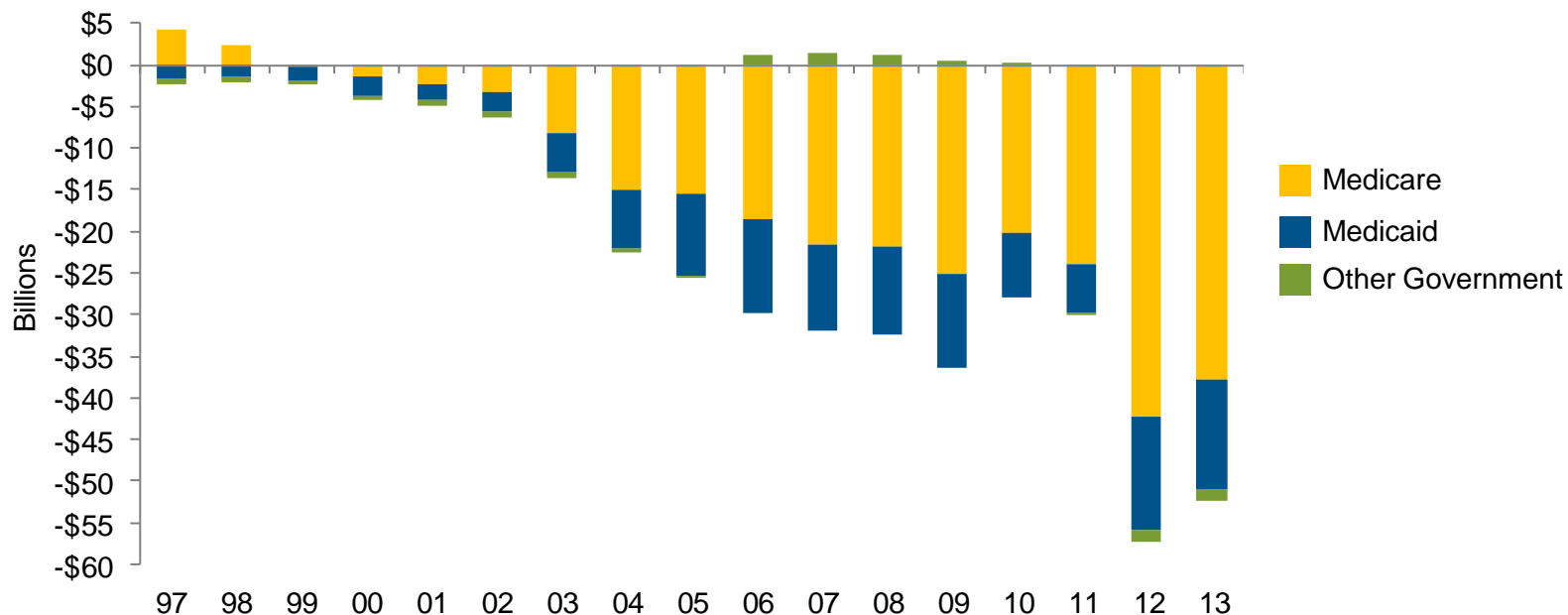


Chart 4.7: Hospital Payment Shortfall Relative to Costs for Medicare, Medicaid and Other Government, 1997 – 2013⁽¹⁾



Source: Avalere Health analysis of American Hospital Association Annual Survey data, 2013, for community hospitals.

⁽¹⁾ Costs reflect a cap of 1.0 on the cost-to-charge ratio.