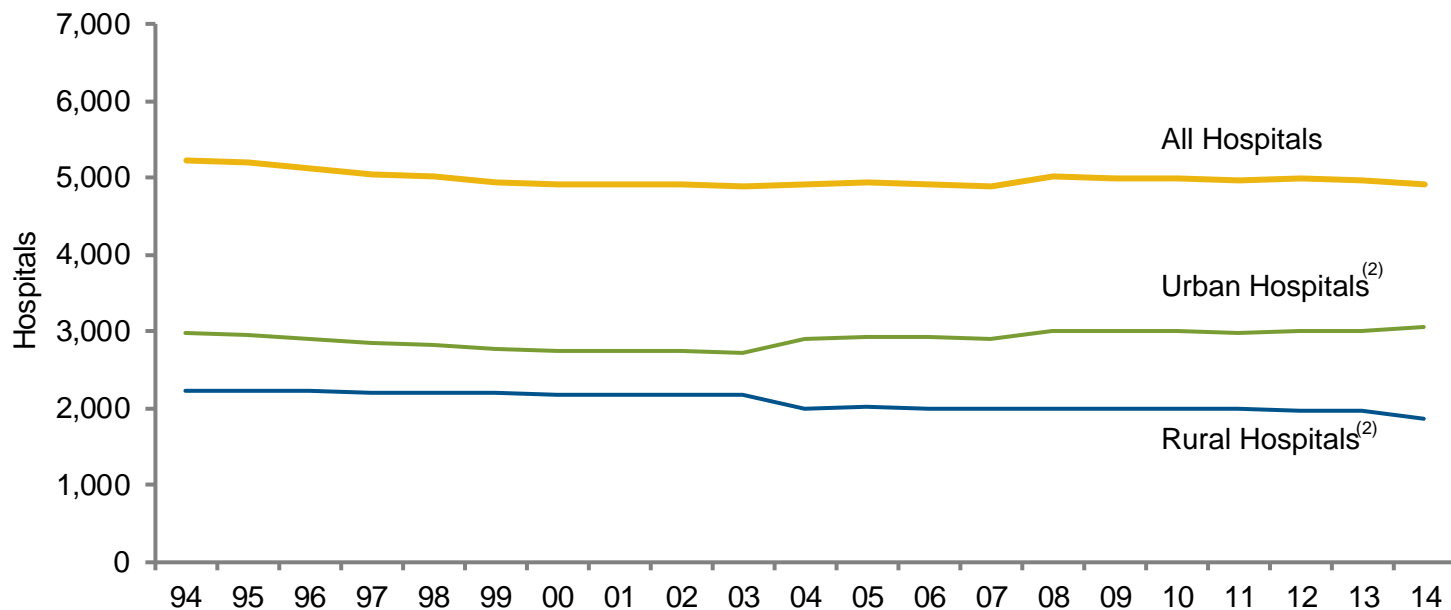




# CHAPTER 2

Organizational Trends

### Chart 2.1: Number of Community Hospitals,<sup>(1)</sup> 1994 – 2014

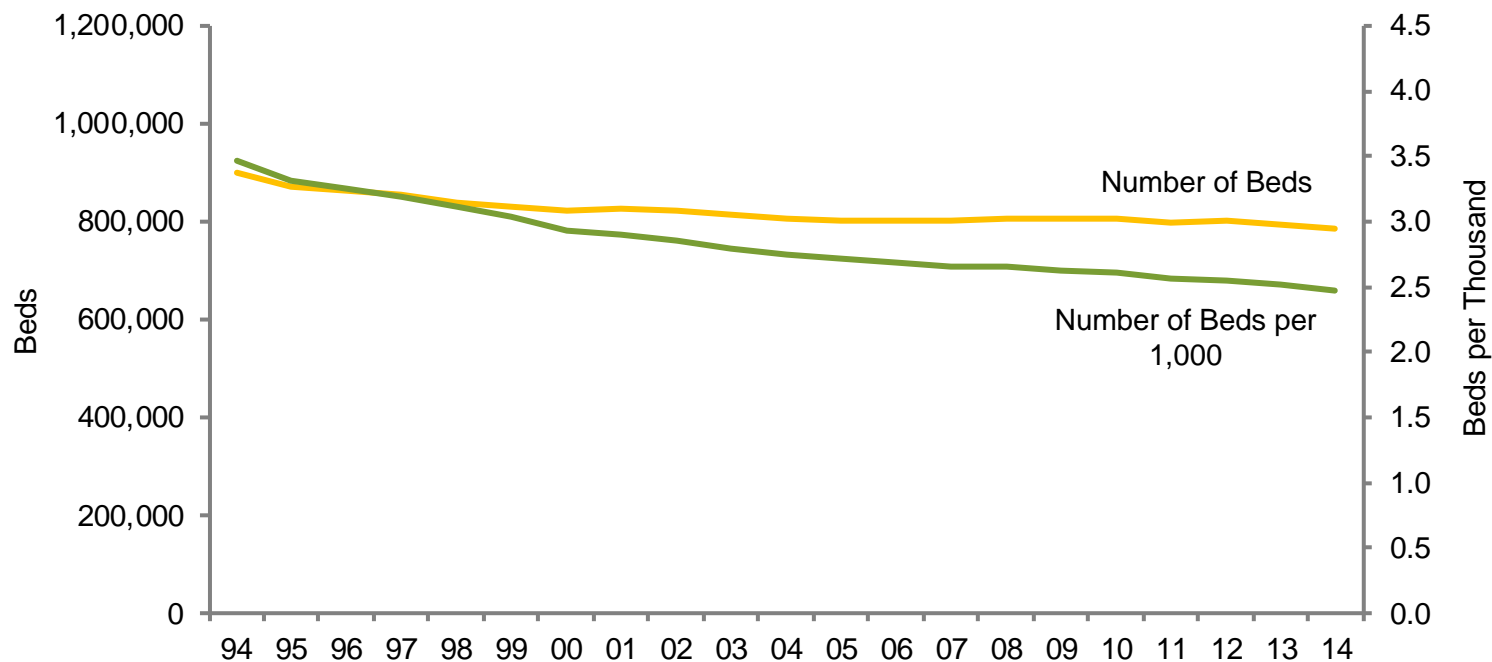


Source: Analysis of American Hospital Association Annual Survey data, 2014, for community hospitals.

(1) All non-federal, short-term general and specialty hospitals whose facilities and services are available to the public.

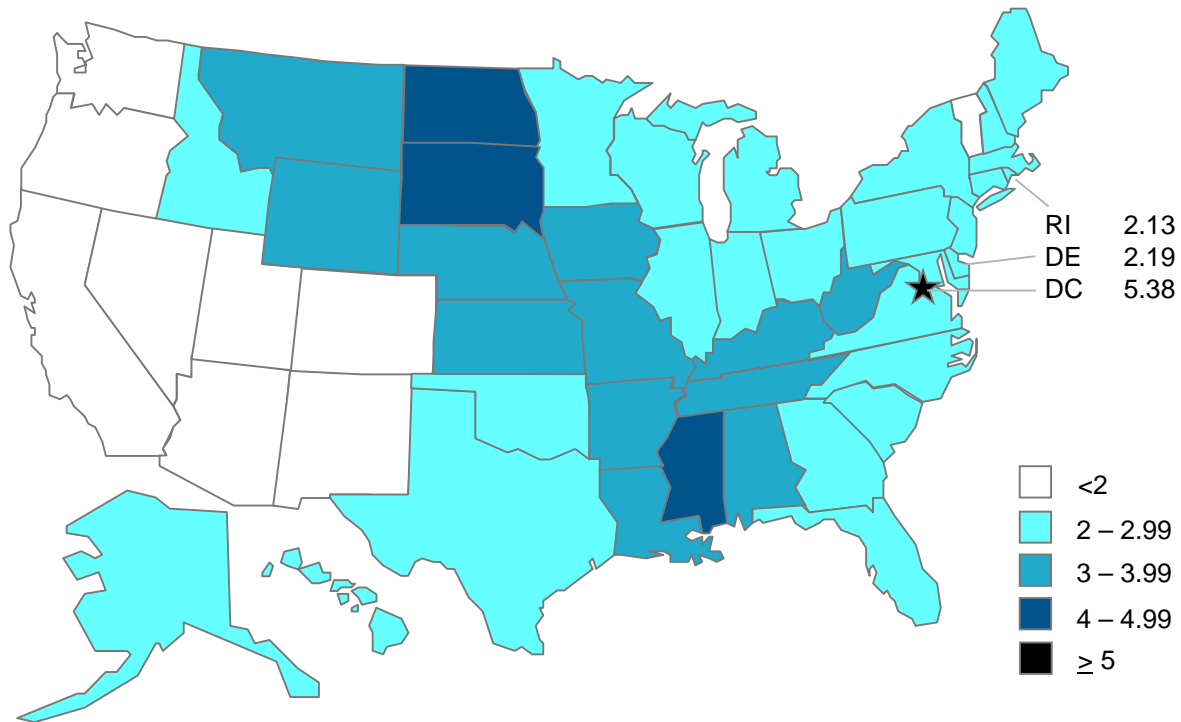
(2) Data on the number of urban and rural hospitals in 2004 and beyond were collected using coding different from previous years to reflect new Centers for Medicare & Medicaid Services wage area designations.

### Chart 2.2: Number of Beds and Number of Beds per 1,000 Persons, 1994 – 2014



Source: Analysis of American Hospital Association Annual Survey data, 2014, for community hospitals.

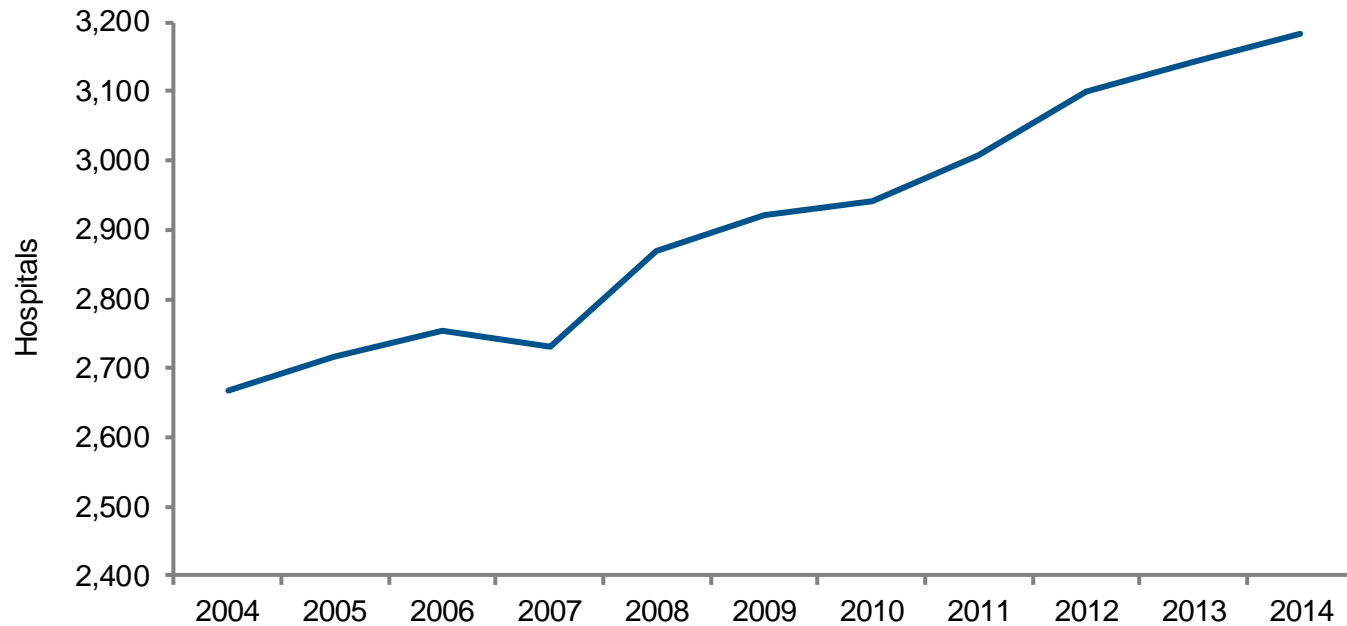
### Chart 2.3: Beds per 1,000 Persons by State, 2014



Source: Analysis of American Hospital Association Annual Survey data, 2014, for community hospitals. US Census Bureau: National and State Population Estimates, July 1, 2014.

Link: <http://www.census.gov/popest/data/state/totals/2014/index.html>.

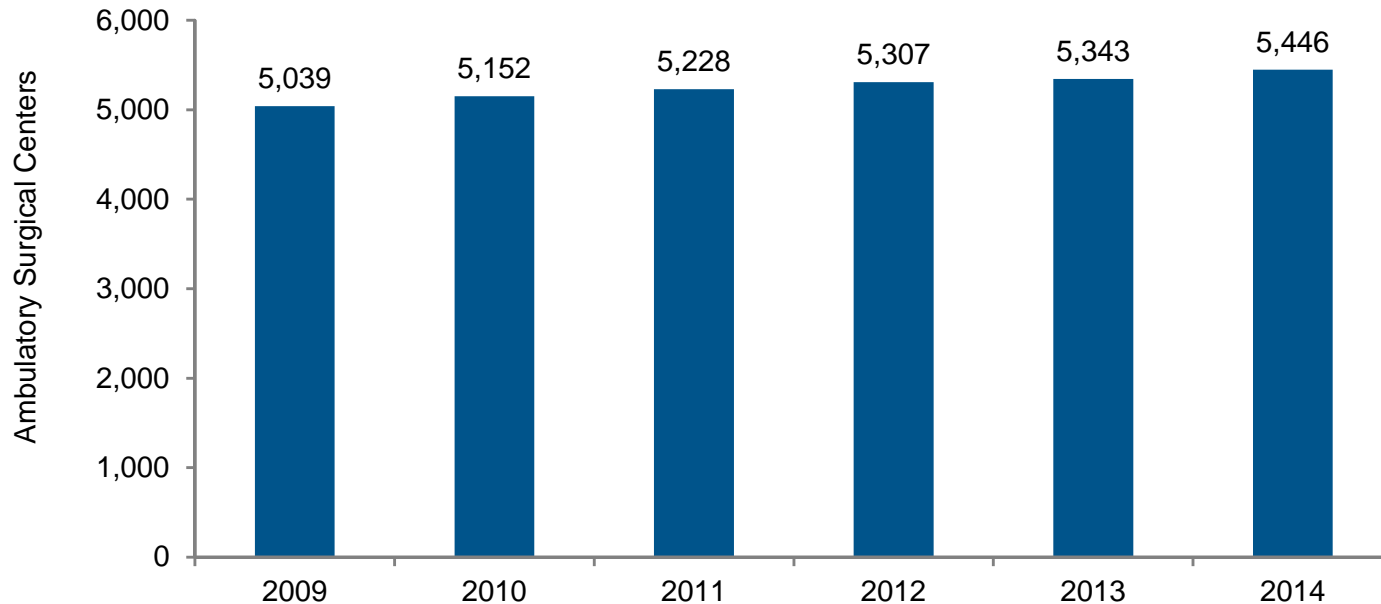
Chart 2.4: Number of Hospitals in Health Systems,<sup>(1)</sup> 2004 – 2014



Source: Analysis of American Hospital Association Annual Survey data, 2014, for community hospitals.

<sup>(1)</sup> Hospitals that are part of a corporate body that may own and/or manage health provider facilities or health-related subsidiaries as well as non-health-related facilities including freestanding and/or subsidiary corporations.

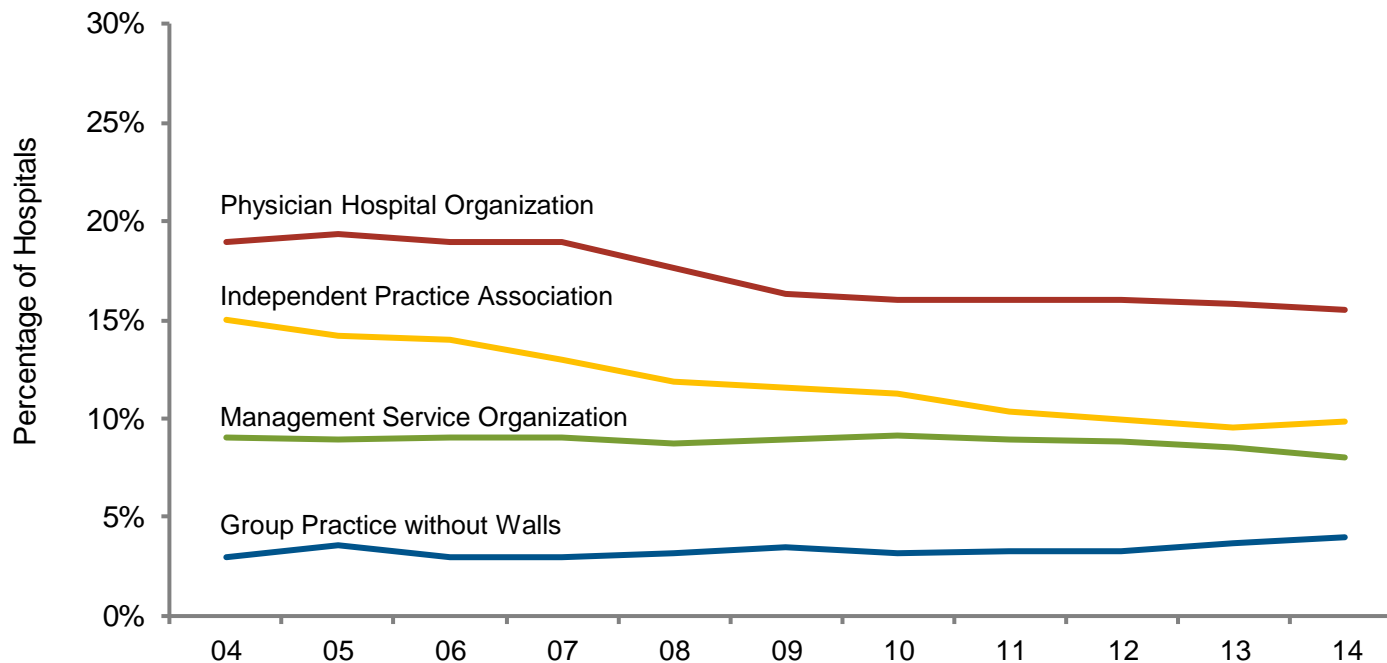
## Chart 2.5: Number of Medicare-certified Ambulatory Surgical Centers, 2009 – 2014



Source: Medicare Payment Advisory Commission. (March 2016). *Report to Congress: Medicare Payment Policy*.

Link: <http://www.medpac.gov/documents/reports/march-2016-report-to-the-congress-medicare-payment-policy.pdf?sfvrsn=2>.

### Chart 2.6: Percentage of Hospitals with Physician Affiliates<sup>(1)</sup> by Type of Relationship, 2004 – 2014

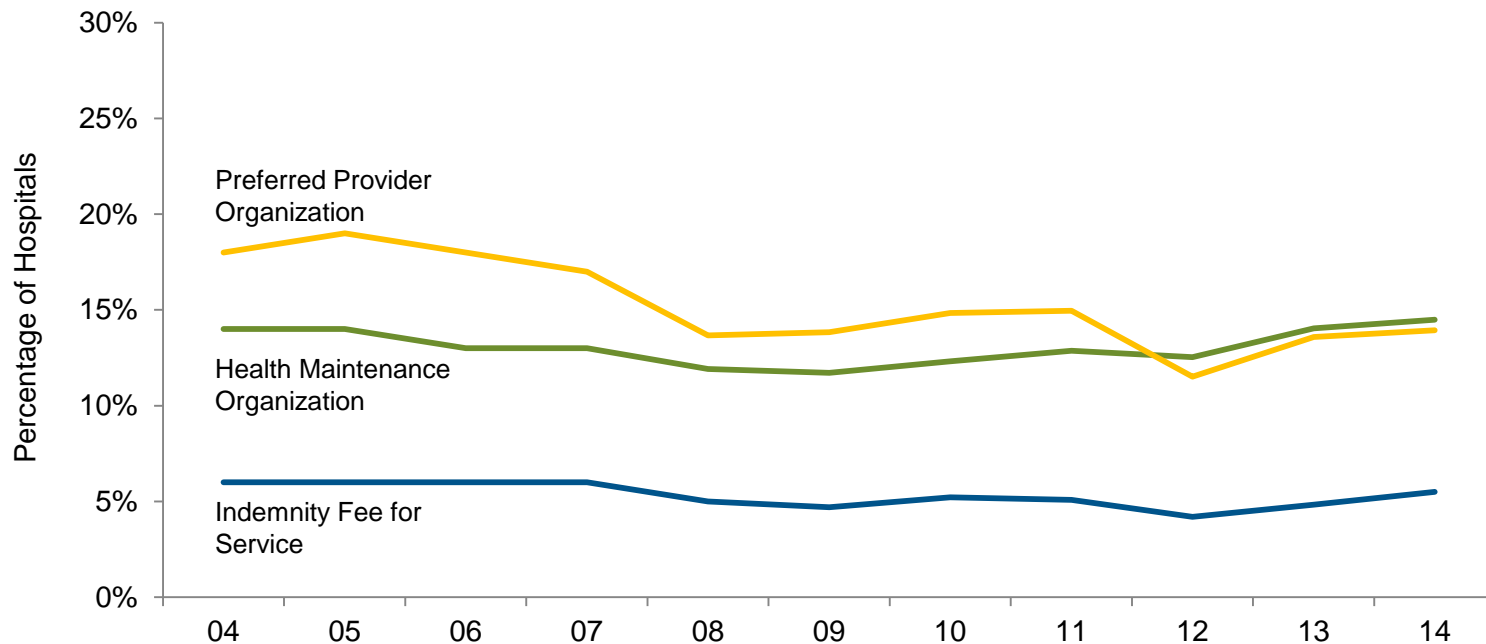


Source: Analysis of American Hospital Association Annual Survey data, 2014, for community hospitals.

<sup>(1)</sup> A hospital is considered to have a physician relationship if the relationship exists as part of the hospital or a system or network of which the hospital is a part.

*Chart 2.7 in 2009 and earlier years' Chartbooks.*

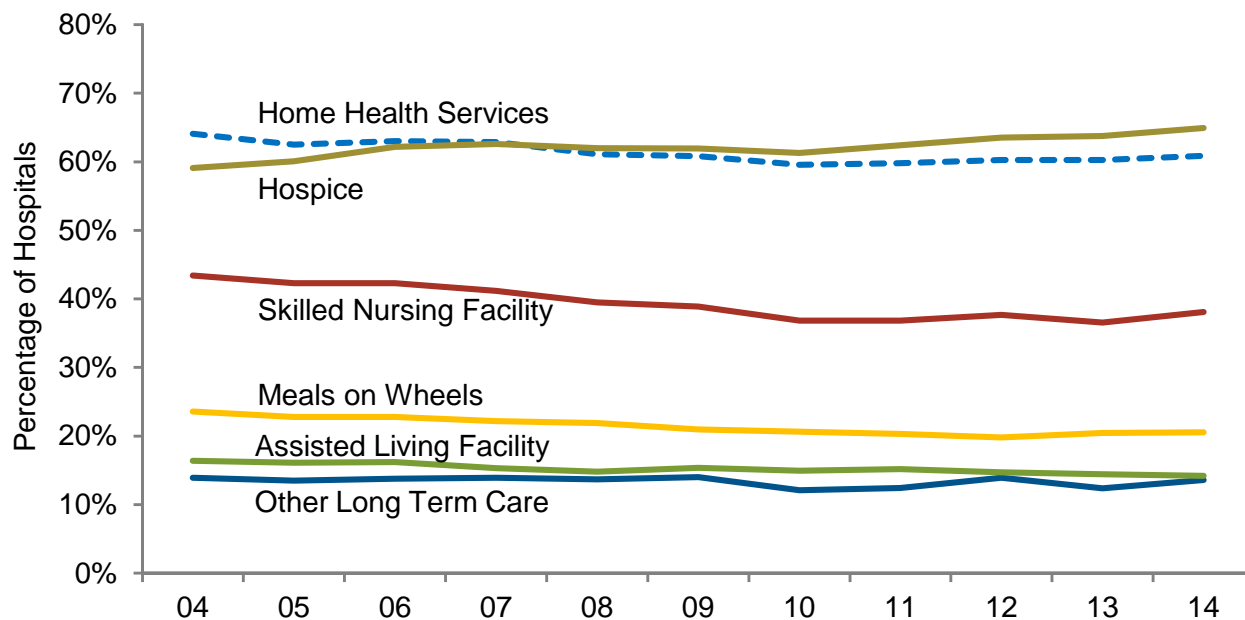
### Chart 2.7: Percentage of Hospitals with Insurance Products by Type of Insurance, 2004 – 2014



Source: Analysis of American Hospital Association Annual Survey data, 2014, for community hospitals.  
 Chart 2.8 in 2009 and earlier years' Chartbooks.



### Chart 2.8: Percentage of Hospitals Offering “Non-hospital” Services,<sup>(1)</sup> 2004 – 2014

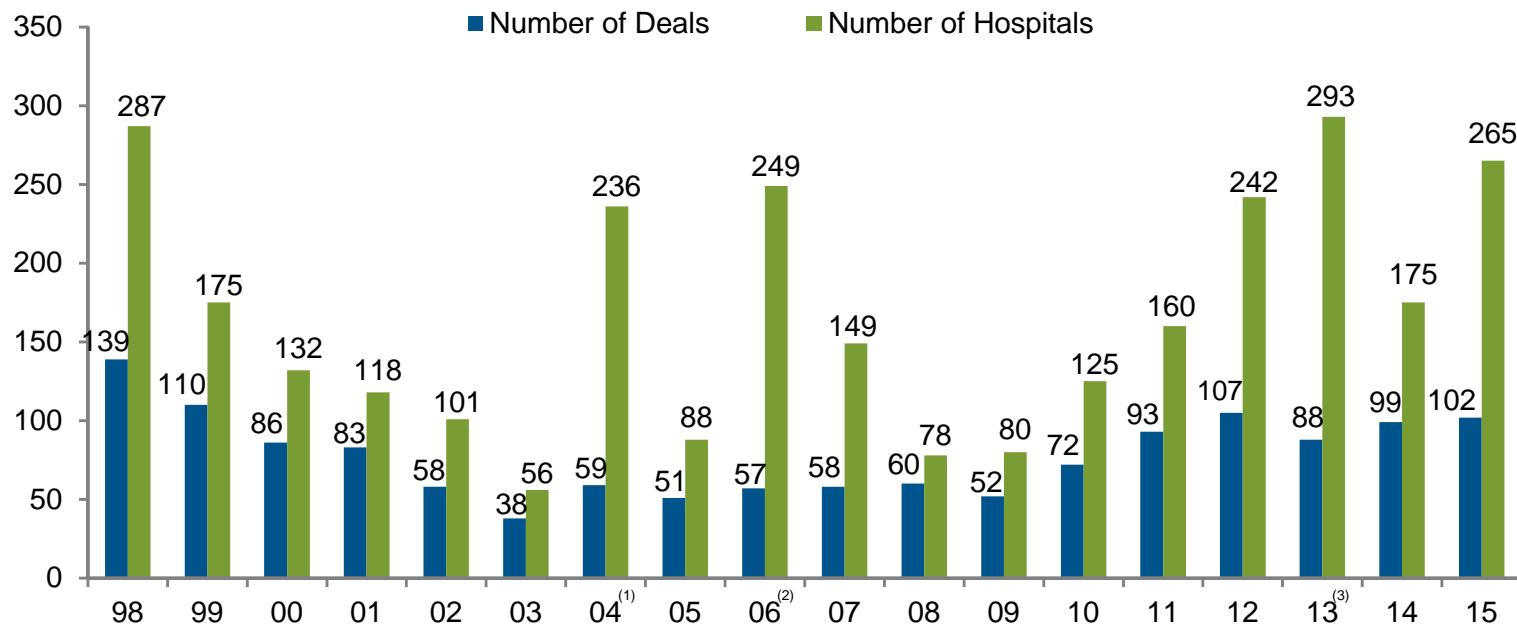


Source: Analysis of American Hospital Association Annual Survey data, 2014, for community hospitals.

<sup>(1)</sup> Includes services offered in hospital, health system, network or joint venture.

Chart 2.9 in 2009 and earlier years' Chartbooks.

Chart 2.9: Announced Hospital Mergers and Acquisitions, 1998 – 2015



Source: Irving Levin Associates, Inc. (2016). *The Health Care Services Acquisition Report*, Twenty-Second Edition.

(1) In 2004, the privatization of Select Medical Corp., an operator of long-term and acute-care hospitals, and divestiture of hospitals by Tenet Healthcare Corporation helped to increase the number of hospitals affected.

(2) In 2006, the privatization of Hospital Corporation of America, Inc. affected 176 acute-care hospitals. The acquisition was the largest health care transaction ever announced.

(3) In 2013, consolidation of several investor-owned systems resulted in a large number of hospitals involved in acquisition activity.

Chart 2.10 in 2009 and earlier years' Chartbooks.