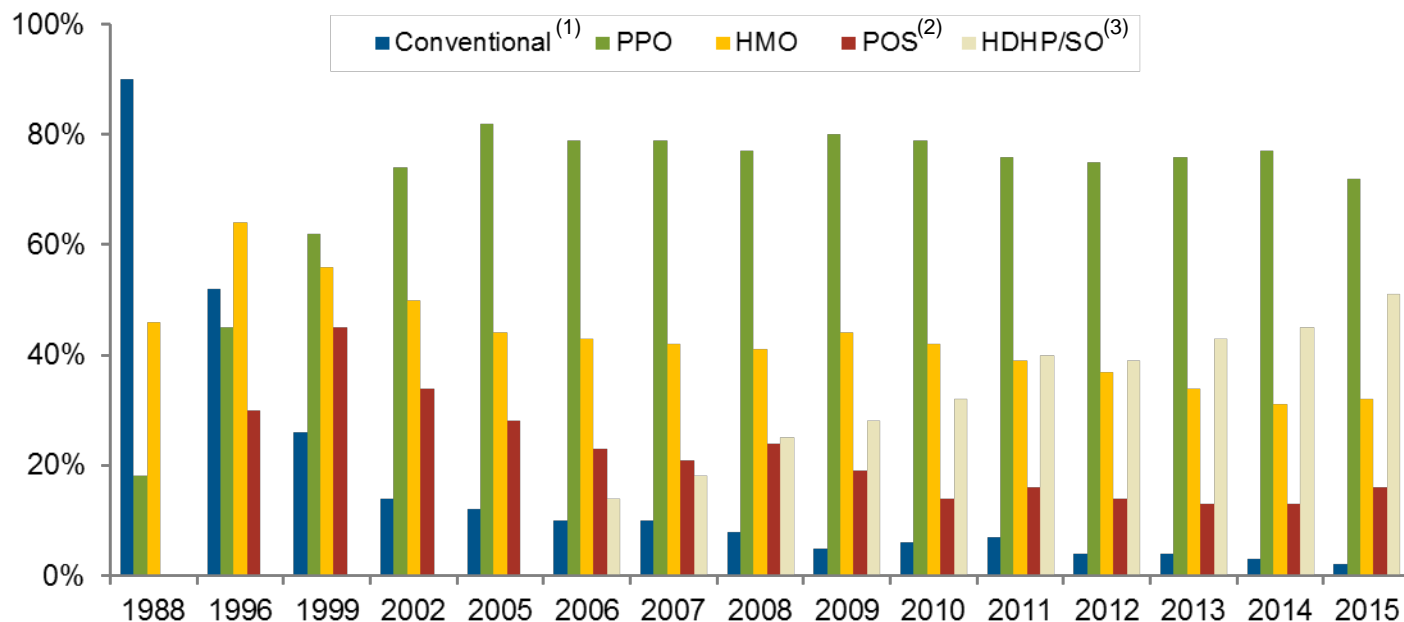


### Chart 1.21: Percentage of Employees with Employer-based Coverage Who Can Choose Conventional, PPO, HMO, POS and HDHP/SO Plans, 1988 – 2015



Source: The Kaiser Family Foundation and Health Research and Educational Trust. Data Released 2015. Employer Health Benefits: 1999, 2002, 2006, 2007, 2008, 2009, 2010, 2011, 2012, 2013, 2014, and 2015.

Link: <http://kff.org/report-section/ehbs-2015-section-four-types-of-plans-offered/>.

KPMG Survey of Employer-Sponsored Health Benefits: 1988, 1996.

<sup>(1)</sup> Conventional plans refer to traditional indemnity plans.

<sup>(2)</sup> Point-of-service plans not separately identified in 1988.

<sup>(3)</sup> In 2006, the survey began asking about HDHP/SO, high deductible health plans with a savings option.