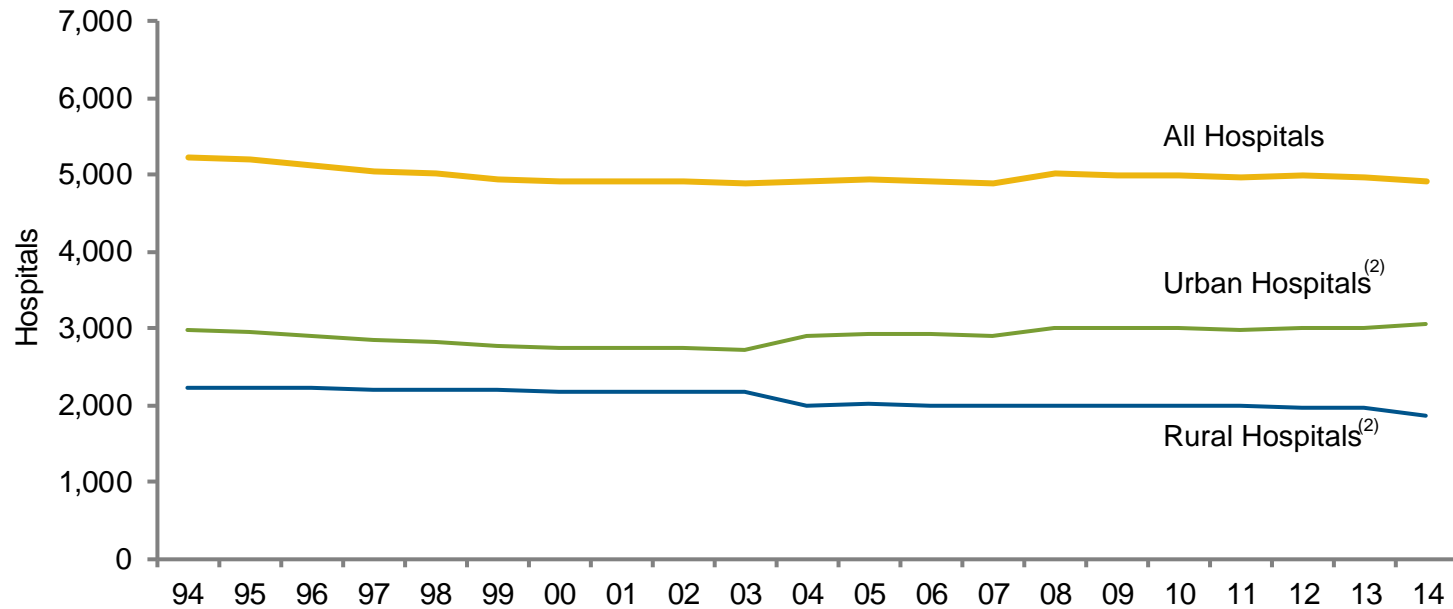


Chart 2.1: Number of Community Hospitals,⁽¹⁾ 1994 – 2014



Source: Analysis of American Hospital Association Annual Survey data, 2014, for community hospitals.

(1) All non-federal, short-term general and specialty hospitals whose facilities and services are available to the public.

(2) Data on the number of urban and rural hospitals in 2004 and beyond were collected using coding different from previous years to reflect new Centers for Medicare & Medicaid Services wage area designations.