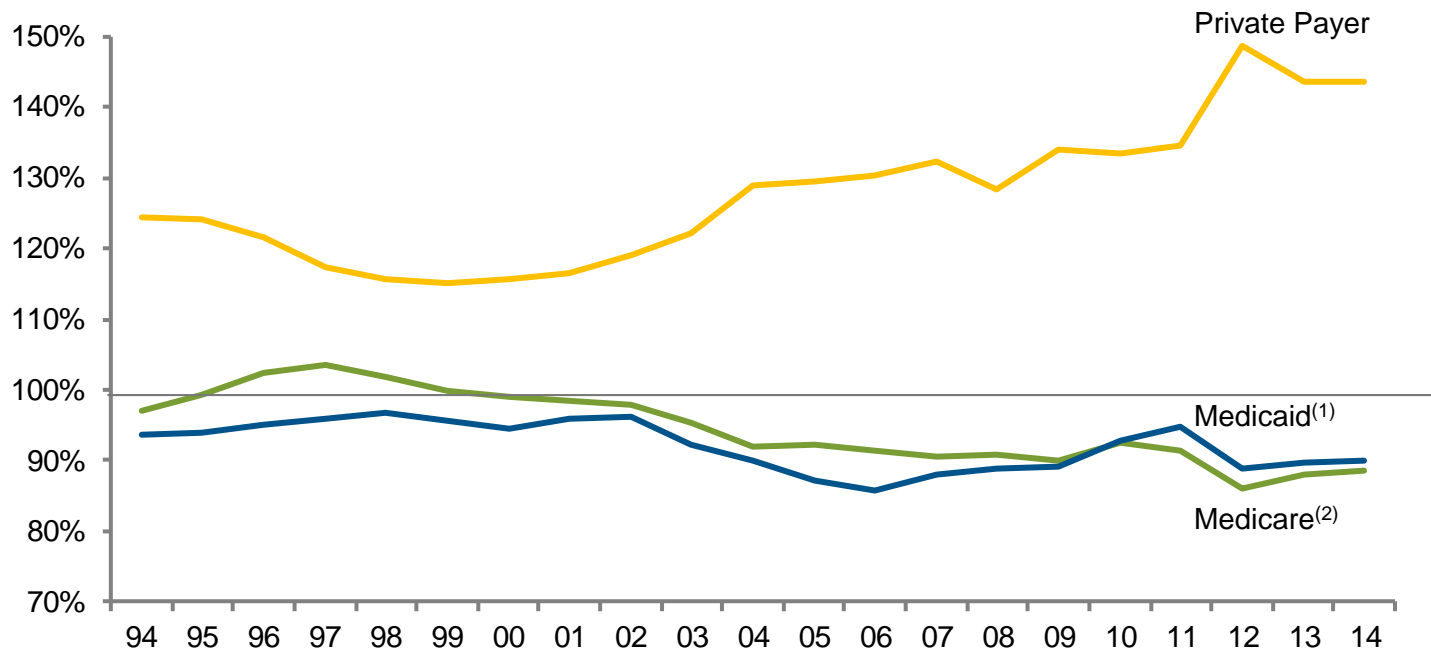


Chart 4.6: Aggregate Hospital Payment-to-cost Ratios for Private Payers, Medicare and Medicaid, 1994 – 2014



Source: Analysis of American Hospital Association Annual Survey data, 2014, for community hospitals.

(1) Includes Medicaid Disproportionate Share payments.

(2) Includes Medicare Disproportionate Share payments.