



Resiliency in the Heartland

November 15, 2016



Thomas L. Bell
President
Kansas Hospital Association



Herb B. Kuhn
President and CEO
Missouri Hospital Association



Agenda

- Introduction – Mindy Hatton
- Resilient KC – Tom Bell
- Joint KHA/MHA Report and Action – Herb Kuhn
- Q & A – Mindy Hatton

HIDI HealthStats
Statistics and Analysis From the Hospital Industry Data Institute

OCTOBER 2016 • Building Resilience Around Trauma and Adverse Childhood Experiences: Identifying High-Risk Communities in Missouri and Kansas

Background
A child that experiences abuse, neglect, a troubled home or toxic stress can carry the burden for a lifetime. The direct and indirect effect of these experiences can influence physical and behavioral health, and even result in premature death. Mitigating the harm of these adverse childhood experiences requires that communities identify the drivers of long-term health and social problems, and build communitywide systems to better serve children at risk for ACEs.

No community is completely immune from families or circumstances that contribute to ACEs. However, using data from several different sources, researchers are able to identify communities where children have a potentially increased risk of ACEs. This risk analysis allows stakeholders to develop initiatives to address the upstream social determinants of downstream physical and emotional health outcomes for children experiencing adverse events.

One approach to reducing the harms of ACEs is to build community resilience — a system defined as “the sustained ability of a community to utilize available resources to respond to, withstand and recover from adverse situations.” Resilience initiatives align and leverage assets across multiple sectors of local economies to maximize residents’ ability to cope with adversity.

Figure 1: 2013-2015 ZIP-Level ACE-Risk Scores

Source: Hospital Industry Data Institute





*Resilient KC:
A Community-based Model to
Address the Health Care
Challenges of Childhood Trauma*



- What: A partnership that aims to build a healthy and resilient community
- Who: Kansas City Chamber of Commerce and Trauma KC – a multi-system, multi-sector, bi-state network of 40 agencies.
- Why: Adverse childhood experiences (ACEs) can lead to poor health outcomes later in life.

WHAT IMPACT DO ACEs HAVE?

As the number of ACEs increases, so does the risk for negative health outcomes



Possible Risk Outcomes:

BEHAVIOR



Lack of physical activity



Smoking



Alcoholism



Drug use



Missed work

PHYSICAL & MENTAL HEALTH



Severe obesity



Diabetes



Depression



Suicide attempts



STDs



Heart disease



Cancer



Stroke



COPD



Broken bones



Target Communities

- Armed Services
- Business
- Education
- Health
- Justice

Education, Common Language, Toolkits and Best Practices will be developed for these target audiences.



Resilient KC aims to:

- Raise awareness of the impacts of trauma and adversities on the greater community
- Build a resilient community
- Collect ACEs and resiliency baseline data

www.weareresilientkc.com



THE KANSAS CITY STAR.

Data can help tackle childhood trauma at the community level



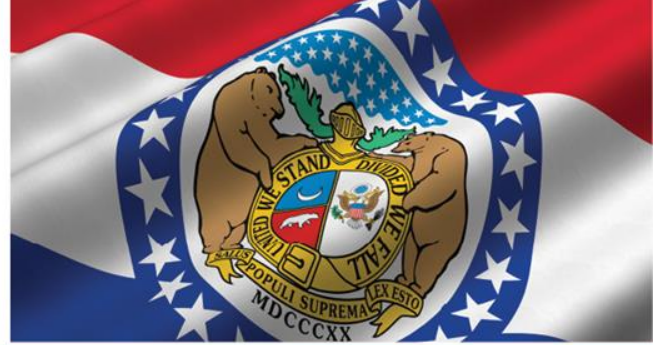
The Kansas Hospital Association and Missouri Hospital Association were able to deliver a community score on adverse childhood experiences at the ZIP-code level for communities in both states. **FILE PHOTO BY JOHN SLEEZER -** jsleezer@kcstar.com

BY TOM BELL
AND HERB B. KUHN
Special to The Star

Kansas City's Resilient KC initiative, a partnership of Healthy KC and Trauma Matters KC, supports the emerging "upstreamist" movement in health care. The concept is to address health problems before they emerge as individual or community-centered health issues. Resilient KC targets community-based trauma.

Long-term and often invisible damage can be caused by childhood abuse and neglect, a troubled home or toxic stress. These factors can influence an individual's physical and behavioral health throughout life — and even result in early death. Research suggests that this damage is compounded by multiple adverse childhood experiences (ACEs).

No Missouri or Kansas community is immune from these factors. Sadly, some are at high risk for all.



KHA and MHA Research and Action



Emerging Pediatric Population Health Model

Adverse Childhood Experiences (ACEs) Latent Variable Model

Landmark study linking traumatic experiences in childhood to disparate health outcomes and premature death in adulthood.

MHA/KHA developed a ZIP code-level ACE risk model using hospital discharge and census-based data.

Intended to inform and augment resilient community initiatives.

Findings were published in October *HIDI HealthStats* <http://bit.ly/2dZ6UBG>

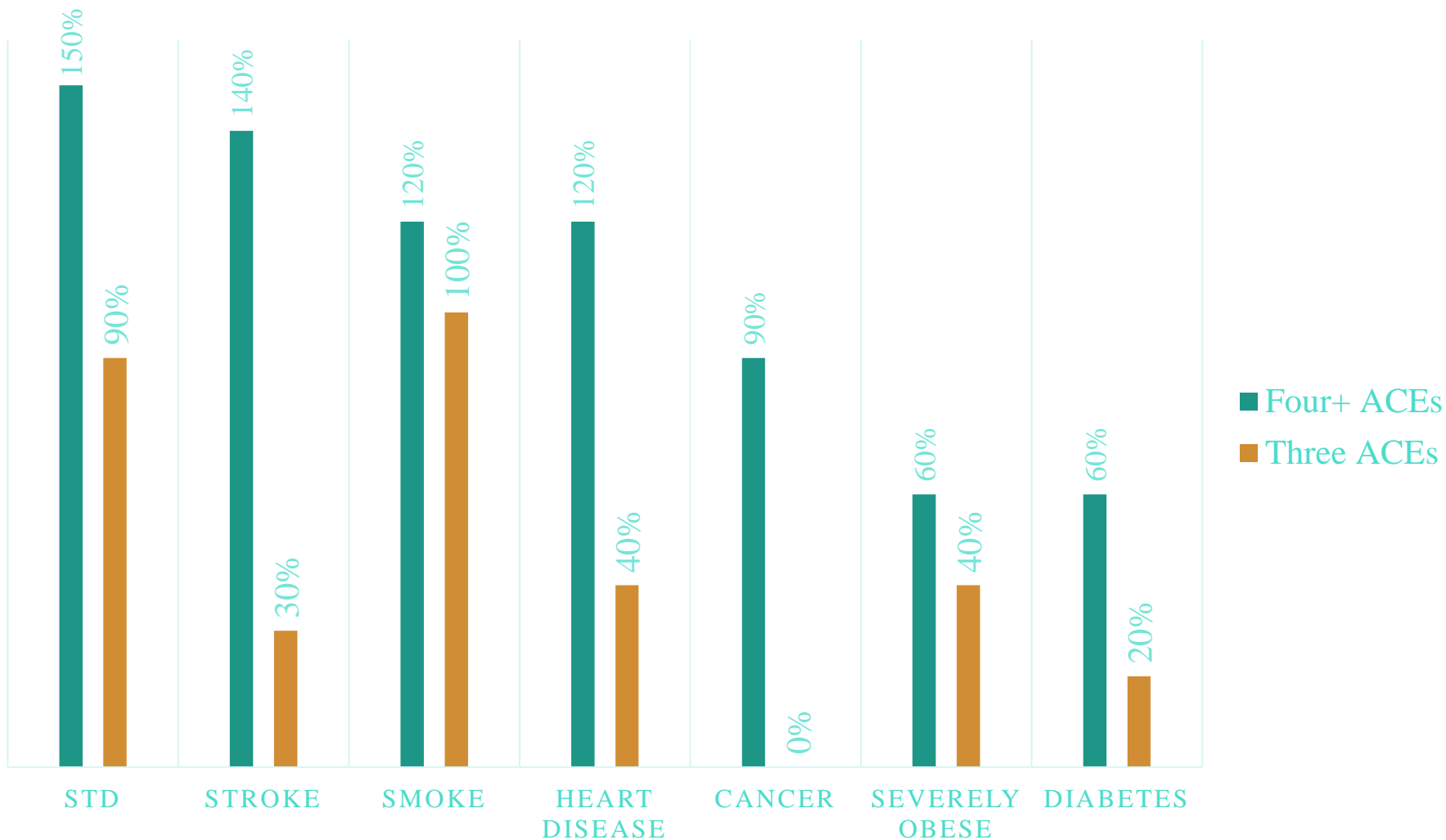
ACE Risk Latent Variable Model Inputs by Domain

ACE Domain Measure		Selection Criteria & Rate Base
Abuse	Emotional Abuse	Under age 19
	Physical Abuse (Child)	Under age 19
	Physical Abuse (Perpetrator)	All
	Sexual Abuse	Under age 19
Household Challenges	Criminal Household Member	All
	Household Substance Abuse (Adult)	Over age 18
	Household Substance Abuse (Child)	Under age 19
	Mental Illness in Household (MDC 19)	Over age 18
	Mental Illness in Household (Suicide)	All
	Mother Treated Violently (Physical)	Female Ages 18-49
	Mother Treated Violently (Sexual)	All
	Parental Separation or Divorce (Counseling)	All
Parental Separation or Divorce (Population)*	ZIP Population	
Neglect	Emotional Neglect (Mental Illness)	Under age 19
	Childhood Poverty Rate*	ZIP Population
	Emotional Neglect (Substance Abuse)	Under age 19
	Rate of Female-Headed Households*	ZIP Population
Toxic Stress	Behavioral Responses	Under age 19
	Family Counseling	All
	Family Disruption	Under age 19
	Gun Violence	All
	Premature Death	Under age 50
	Unemployment and Low Education	All
	Insufficient Housing and Social Supports	Under age 19

*Variables gathered from the 2013-2015 Nielsen Claritas PopFacts Premier databases.



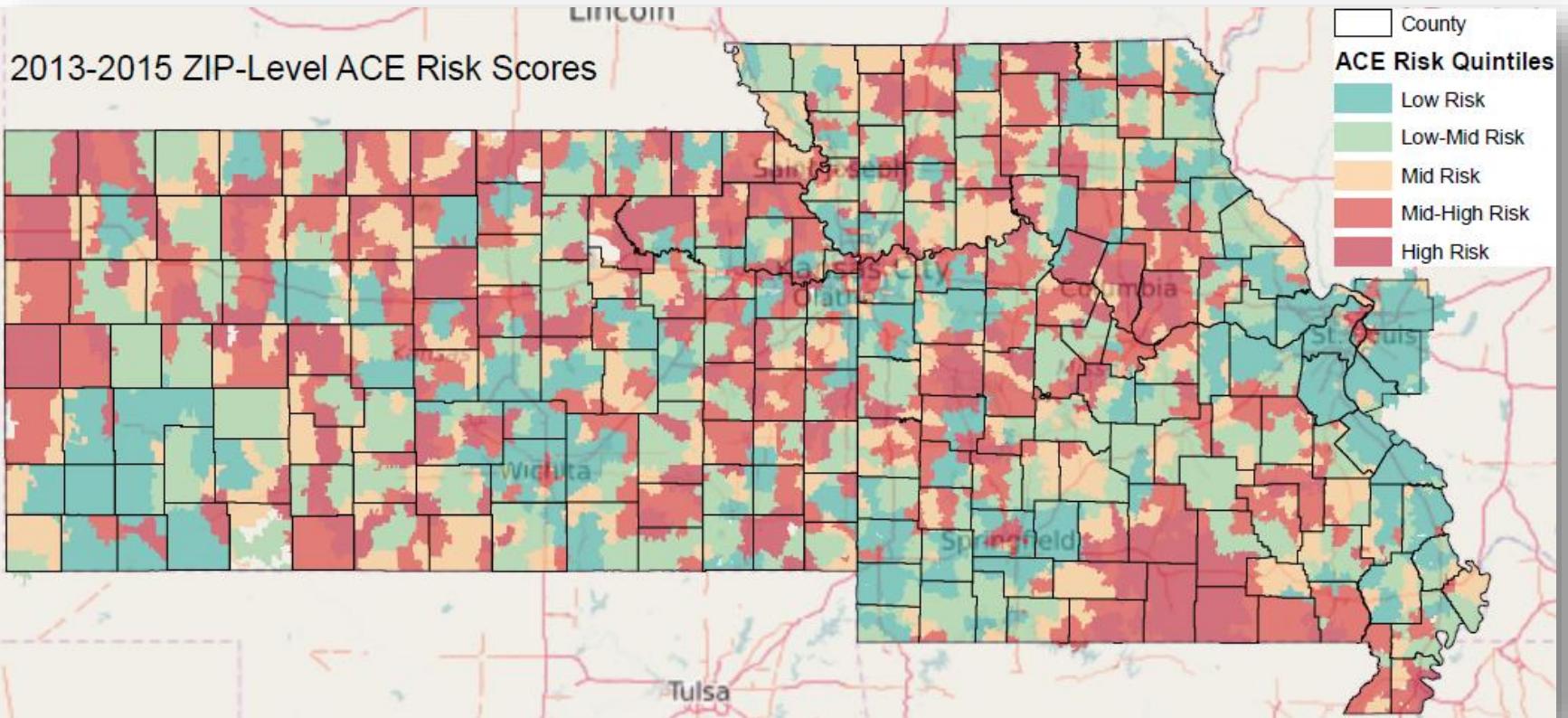
Increased Risk of Downstream Health and Behavioral Consequences in Adulthood for Children Experiencing 3+ ACEs



Source: Felitti et al. (1998). Relationship of Childhood Abuse and Household Dysfunction to Many of the Leading Causes of Death in Adults

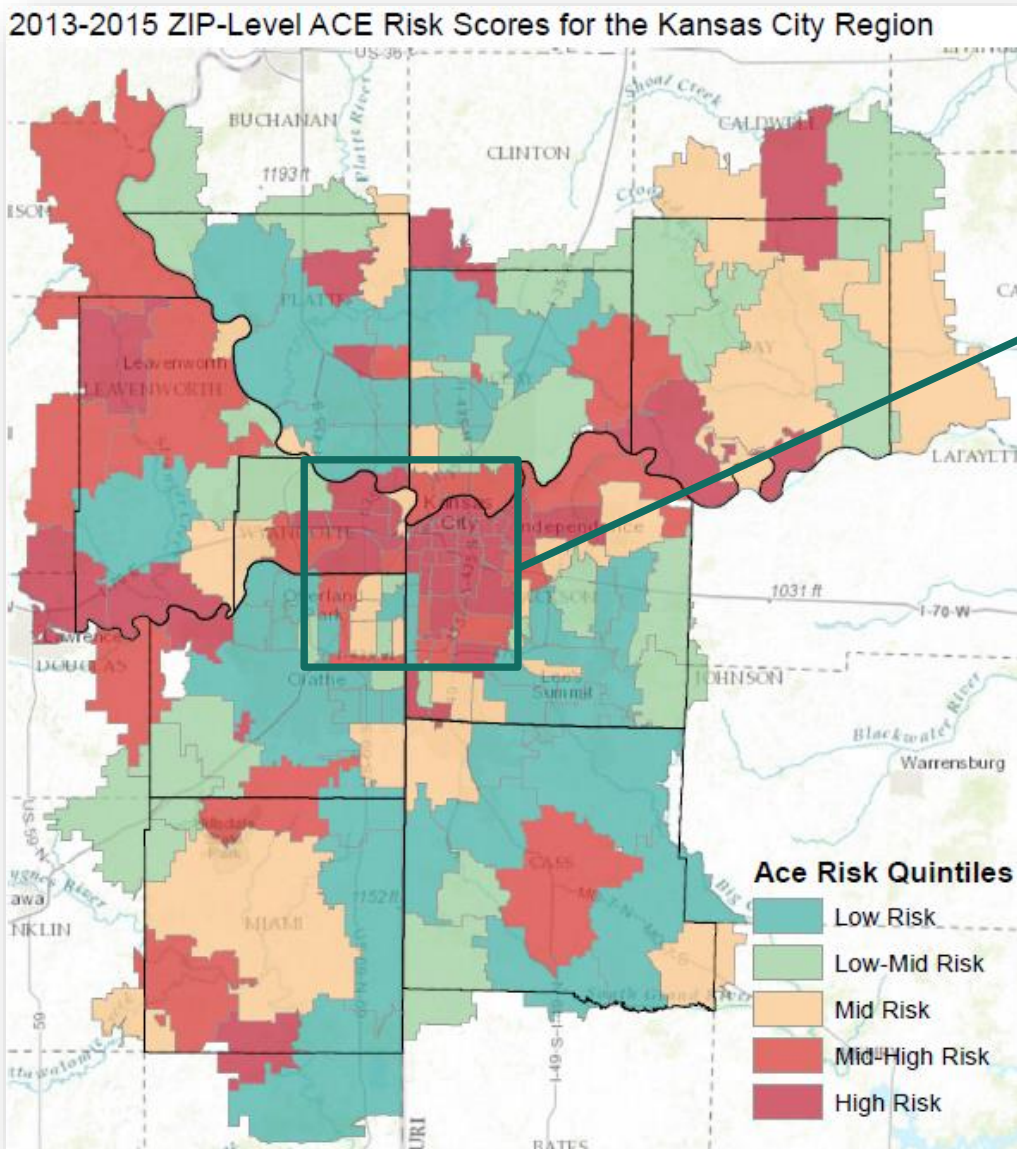


Statewide Results

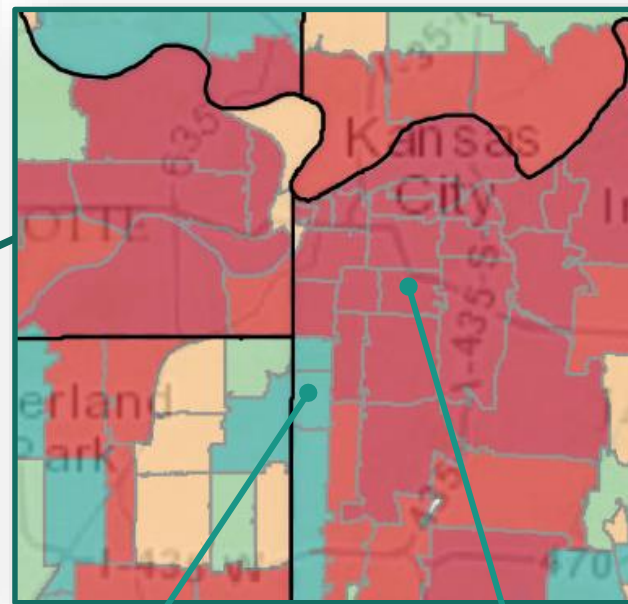




Greater Kansas City Metro Area Results



Critical Differences



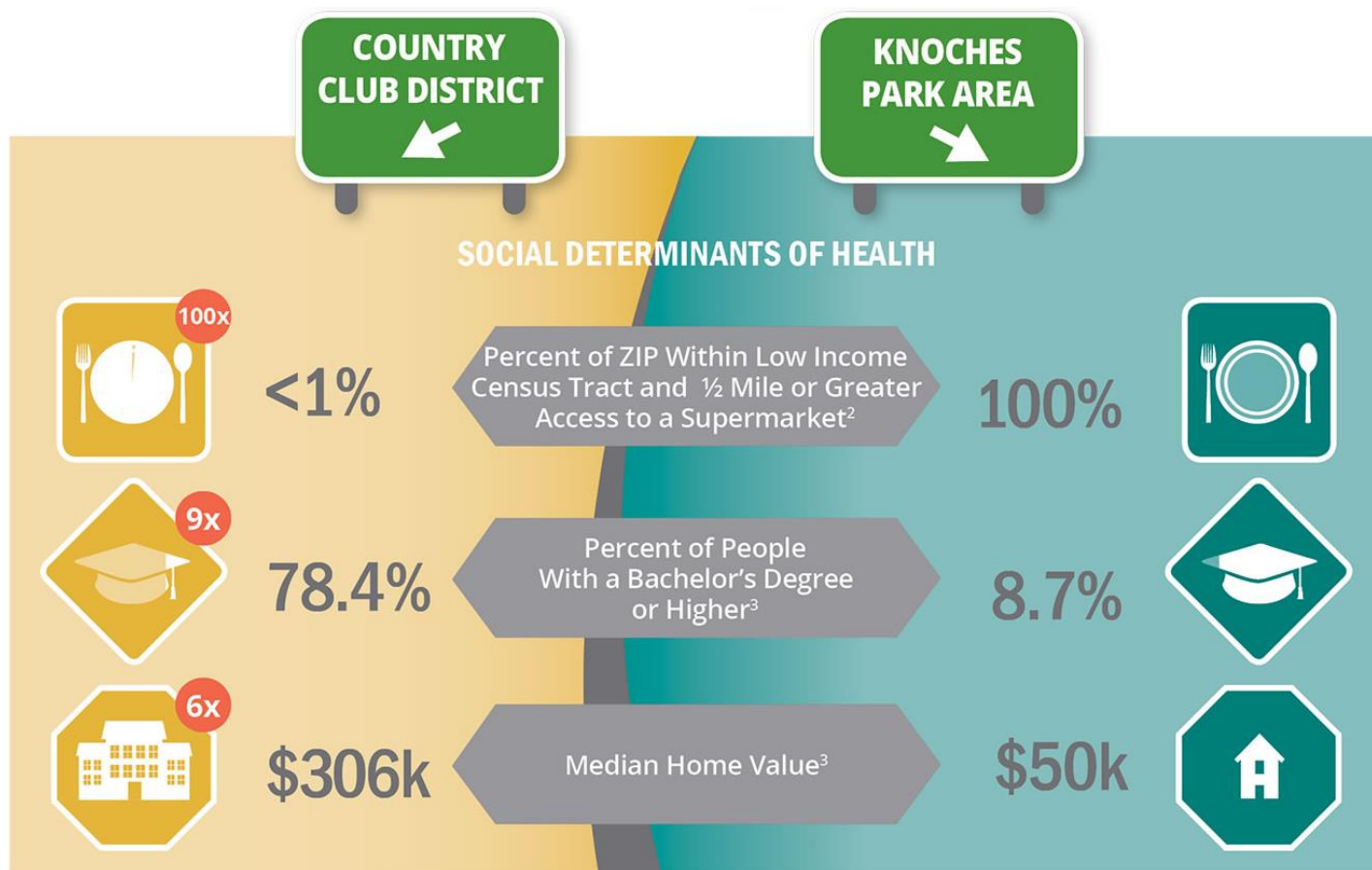
64113
Country
Club District

64128
Knoch's
Park Area

4 Miles Away **A World Apart**

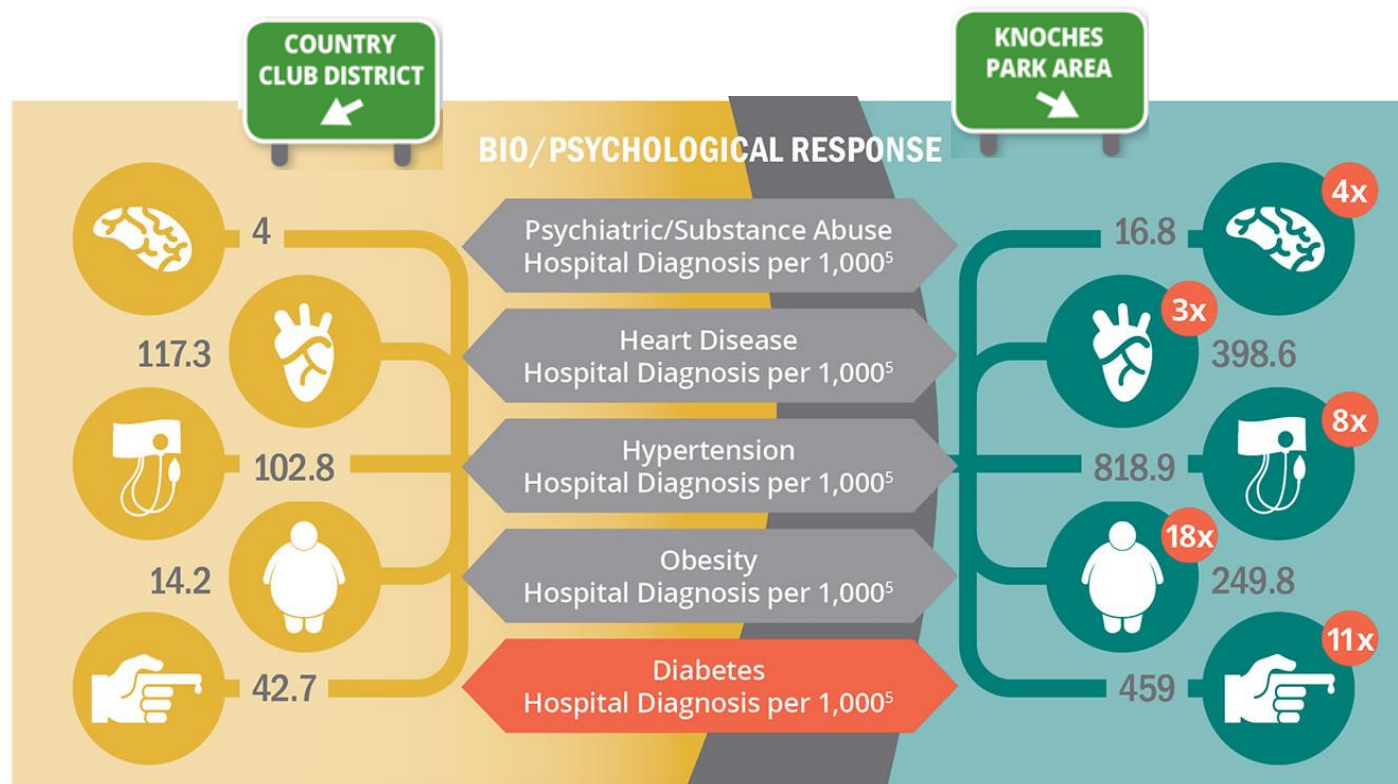


Upstream Social Determinants of Health—Including ACEs



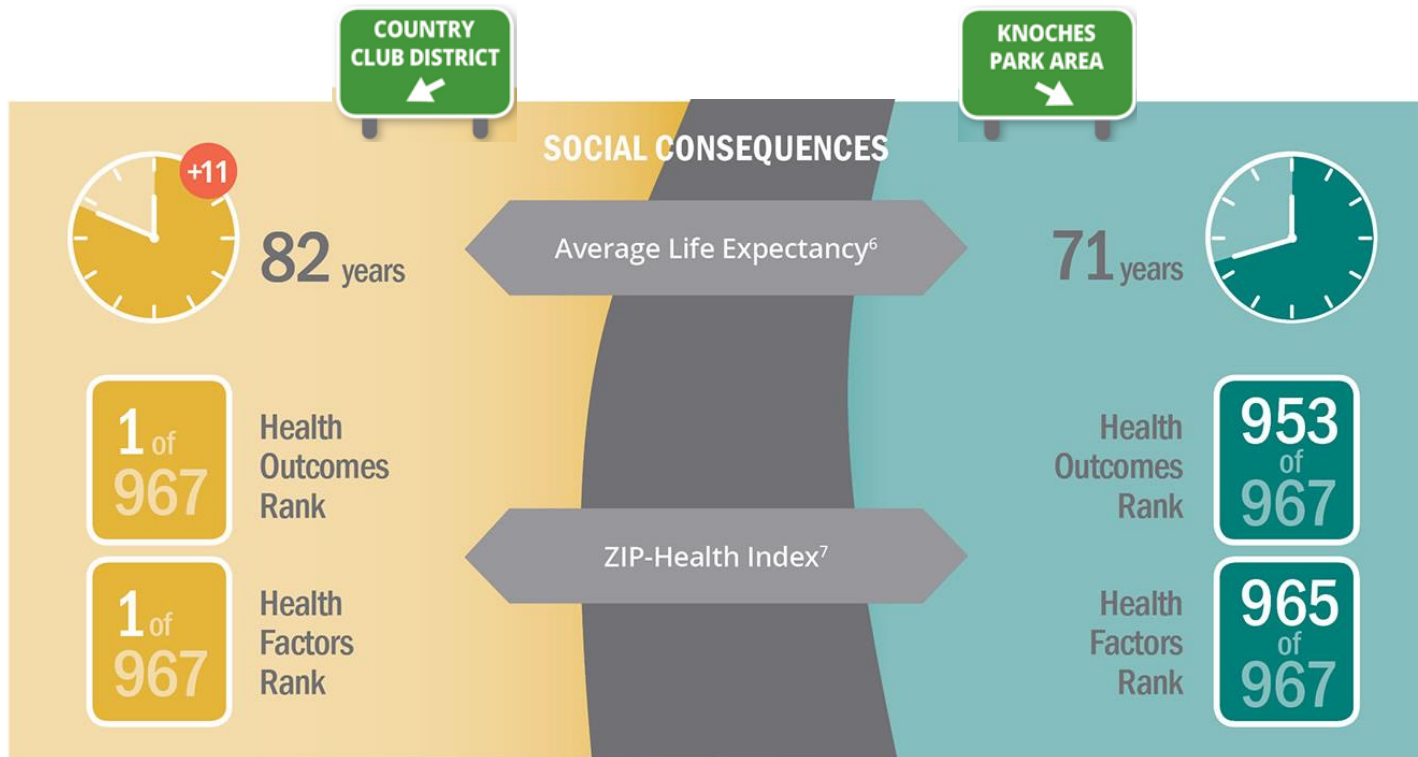


Midstream Biological and Psychological Responses





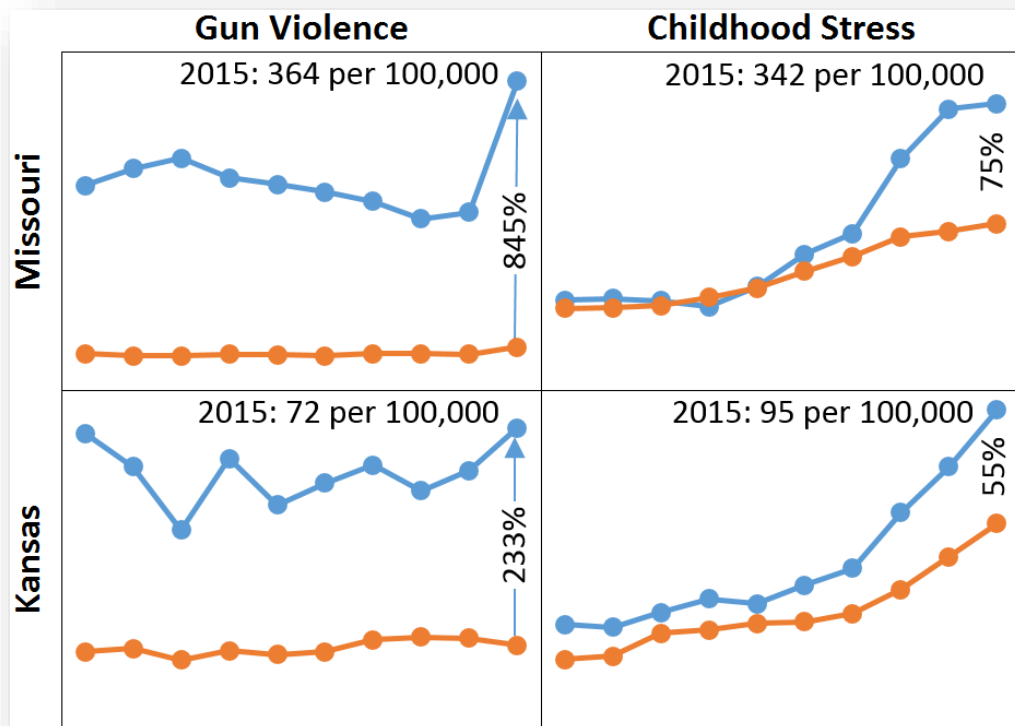
Severe Downstream Health Outcomes





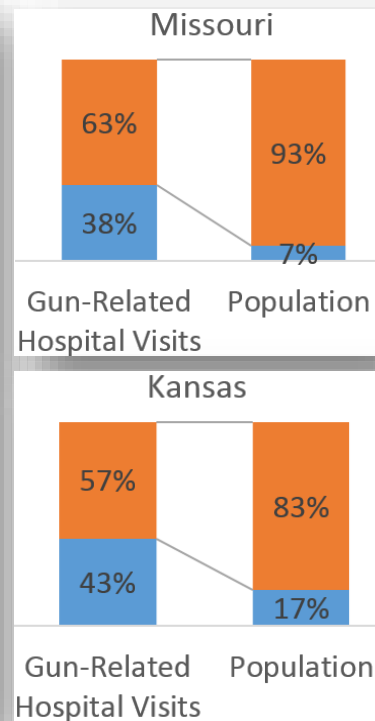
Gun Violence—An Emerging Public Health Threat: Rates of Gun-Related Hospital Utilization and Pediatric Stress Diagnoses for Missouri and Kansas: Top 20 Gun Violence Hot Spots vs. Rest of State

Ten Year Trends: FY 2006 to 2015



■ All Other ZIP Codes in State
■ Top 20 Gun-Related ZIP Code Hot Spots

FY 2015 Gun-Related vs. Population





Thank You

Questions?