

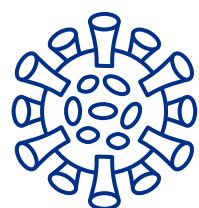
CASE STUDY

Intermountain Health /
Utah Department of Health and Human Services



HOSPITAL COMMUNITY
COLLABORATIVE

PREVENTING SUICIDE THROUGH A NETWORK OF HELP

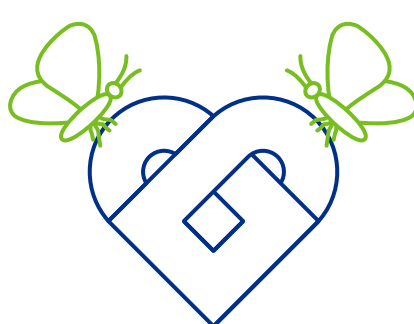


The COVID-19 pandemic contributed to suicide risk among health care workers.

In response, Intermountain Health and the Utah Department of Health and Human Services' Office of Substance Use and Mental Health (SUMH) partnered to **update the health system's crisis response protocol for suicide prevention and postvention** for its caregivers.



Intermountain
Health

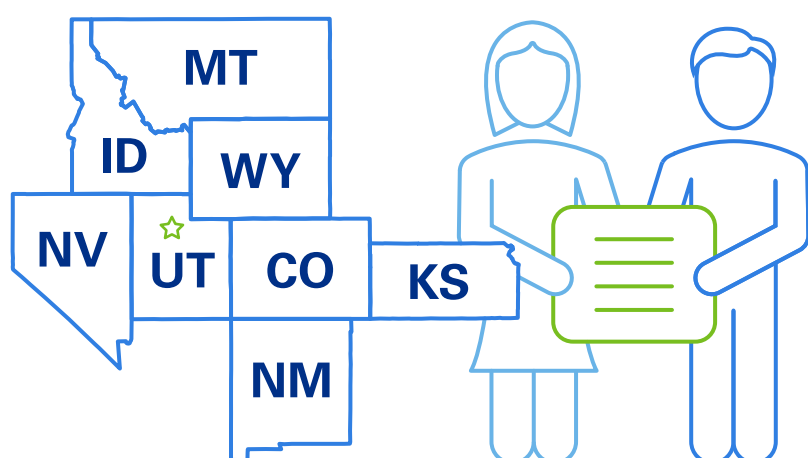


Utah Department of
Health & Human
Services

Participating in the HCC, the organizations **created the first comprehensive suicide crisis response plan** for Intermountain caregivers.

The plan was
implemented
across the
entire system.

60,000
caregivers



It encompasses:



Crisis response planning



Postvention playbook



Lethal means safety counseling

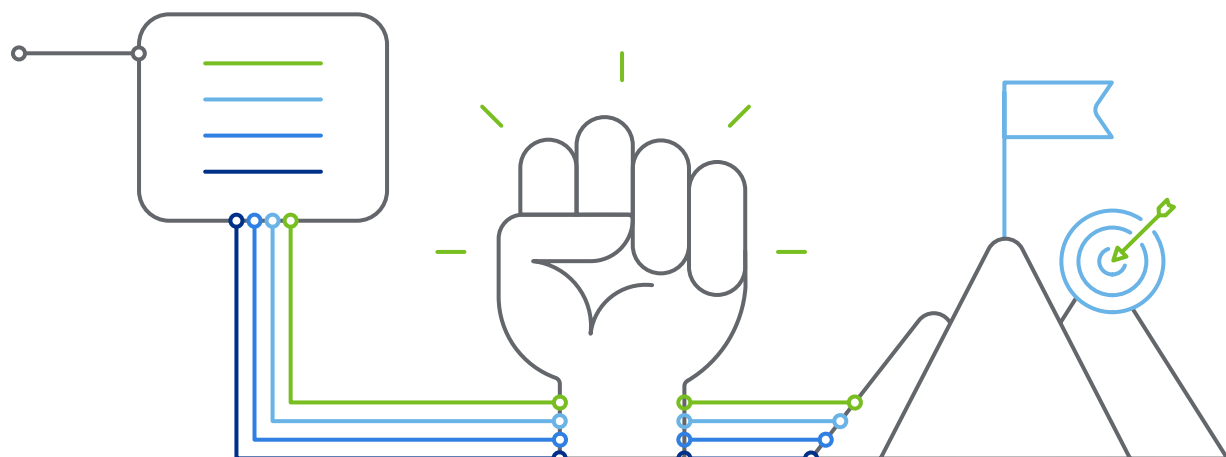


Caregiver training



Live On playbook, a statewide suicide prevention education campaign

The HCC provided the structure and motivation needed for success, inspiring the partners to stay on target, gain valuable feedback and improve resources by:



Using a
community-based
database to
incorporate more
relevant findings.



Changing an
Intermountain
caregiver survey
from annual to
quarterly and adding
questions to gauge
concerns and
well-being.



Creating a
dashboard for
tracking data,
trainings and
peer support.

Intermountain also continues to update its suicide crisis response plan with input from two key internal groups:

Caregiver Well-Being Resource Group

Front-line caregivers
and others directly
touched by suicide

Caregiver Well-Being Steering Committee

Key leaders who
can empower
systemic change

SUMH's postvention playbook has expanded and grown as a valuable resource. Key learnings and best practices are regularly added.

The partnership has produced:

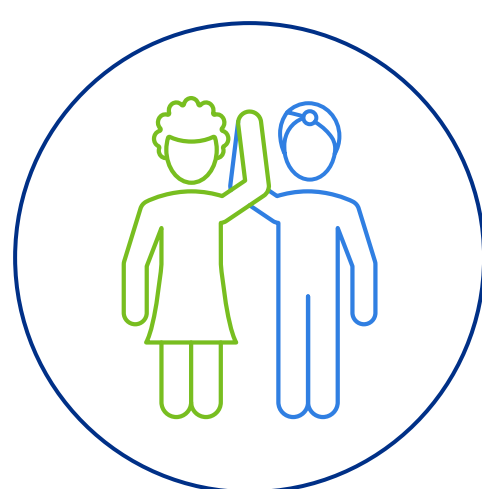
- A greatly expanded network, including:



Utah
Suicide Prevention
Coalition



Utah
Zero Suicide
Collaborative



- Shared resources. For example, SUMH and the U.S. Department of Health and Human Services have shared Intermountain's newly updated Counseling on Access to Lethal Means (CALM) to Prevent Suicide training extensively with their networks.

The Hospital Community Collaborative provides proven ideas, insights and resources for creating effective, sustainable collaborations between hospitals and community organizations across sectors to reduce disparities in health outcomes. [Find out more at: aha.org/center/hcc](https://aha.org/center/hcc)